



#LamborghiniSC

ROAD AMERICA

THU | AUG 15 | 12PM ET



SQUADRA CORSE

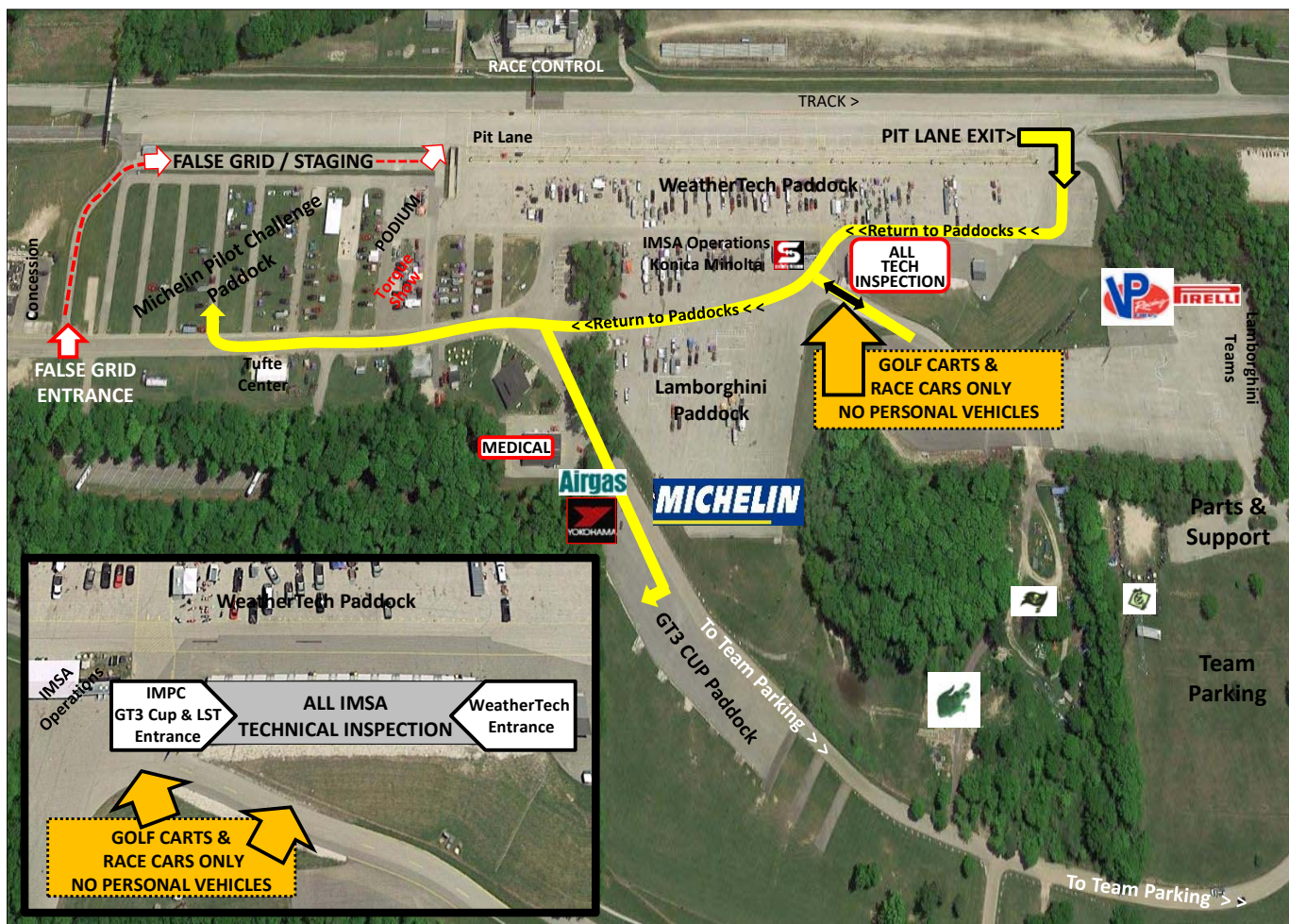
STREAMING LIVE  | AUG. 3 2:55PM ET | #IMSA
AUG. 4 11:45AM ET

- **Friday at 6:00pm - Tufte Center, Road America State of the Series and Calendar Announcement**
- **Please make sure you perform a Stall Test on all cars as part of your standard procedures**
- **As a reminder the new Drive Shafts are available with immediate effect**
- **USA stock of 'old' brakes is now depleted. New front Brakes are available from Parts Trailer. Do not mix side to side. Front to Rear is OK**

Paddock Flow



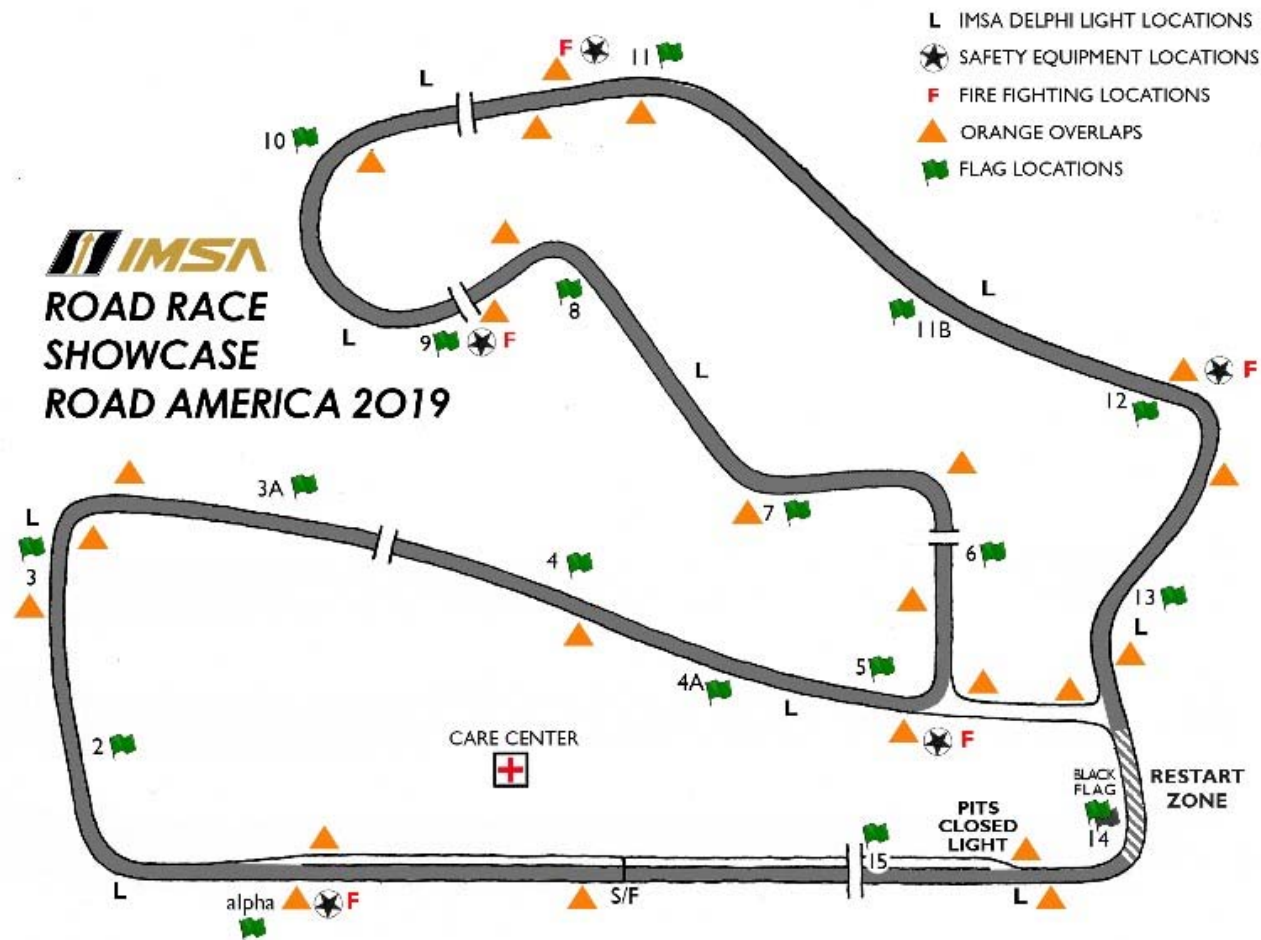
IMSA Road America Event 2019



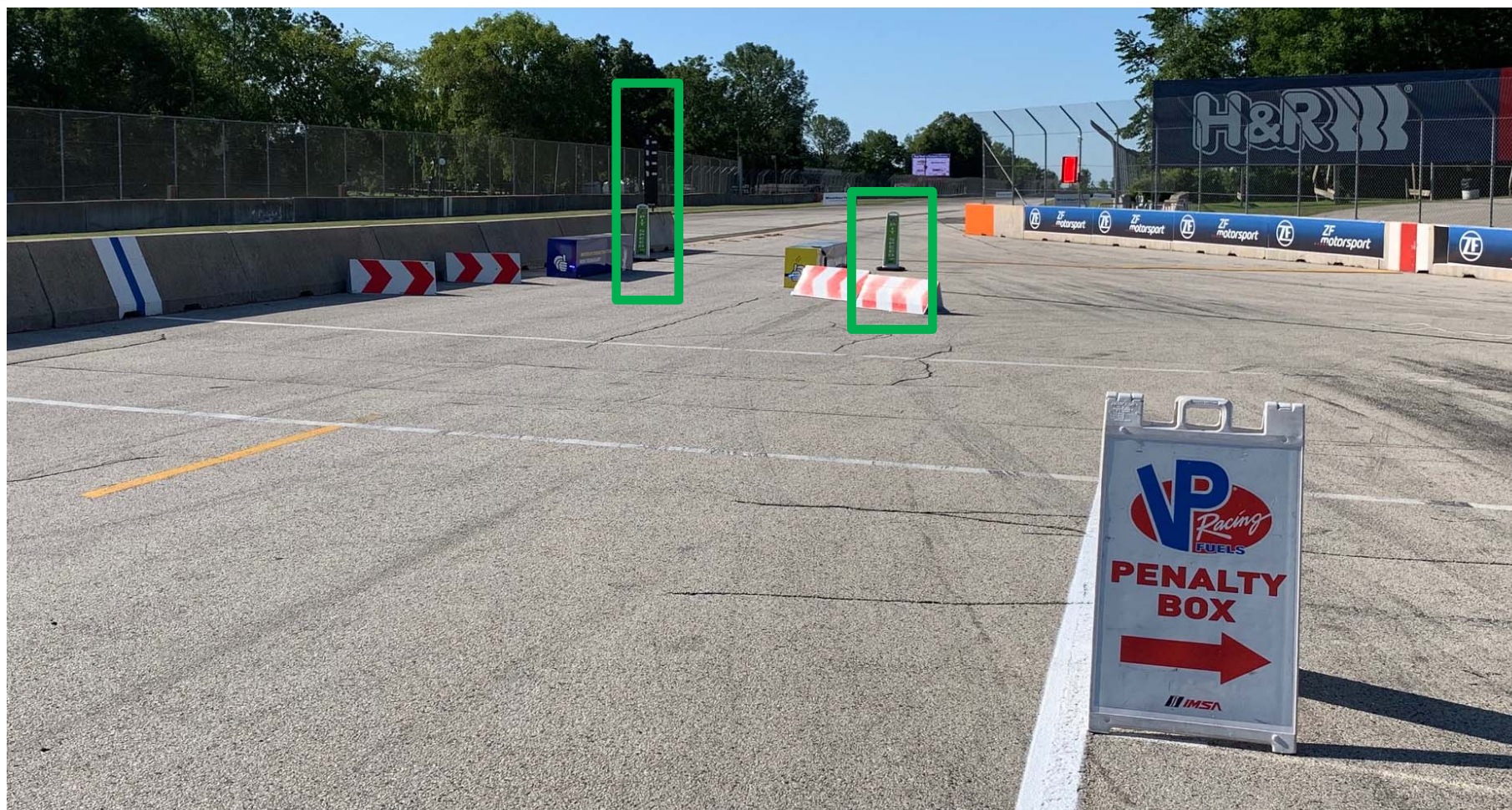
TRACK MAP



ROAD RACE SHOWCASE ROAD AMERICA 2019



PIT EXIT - RFID/PLSL ENDS/ PIT EXIT LIGHT



PIT OUT BLEND LINE





OVERLAPS - EXAMPLE



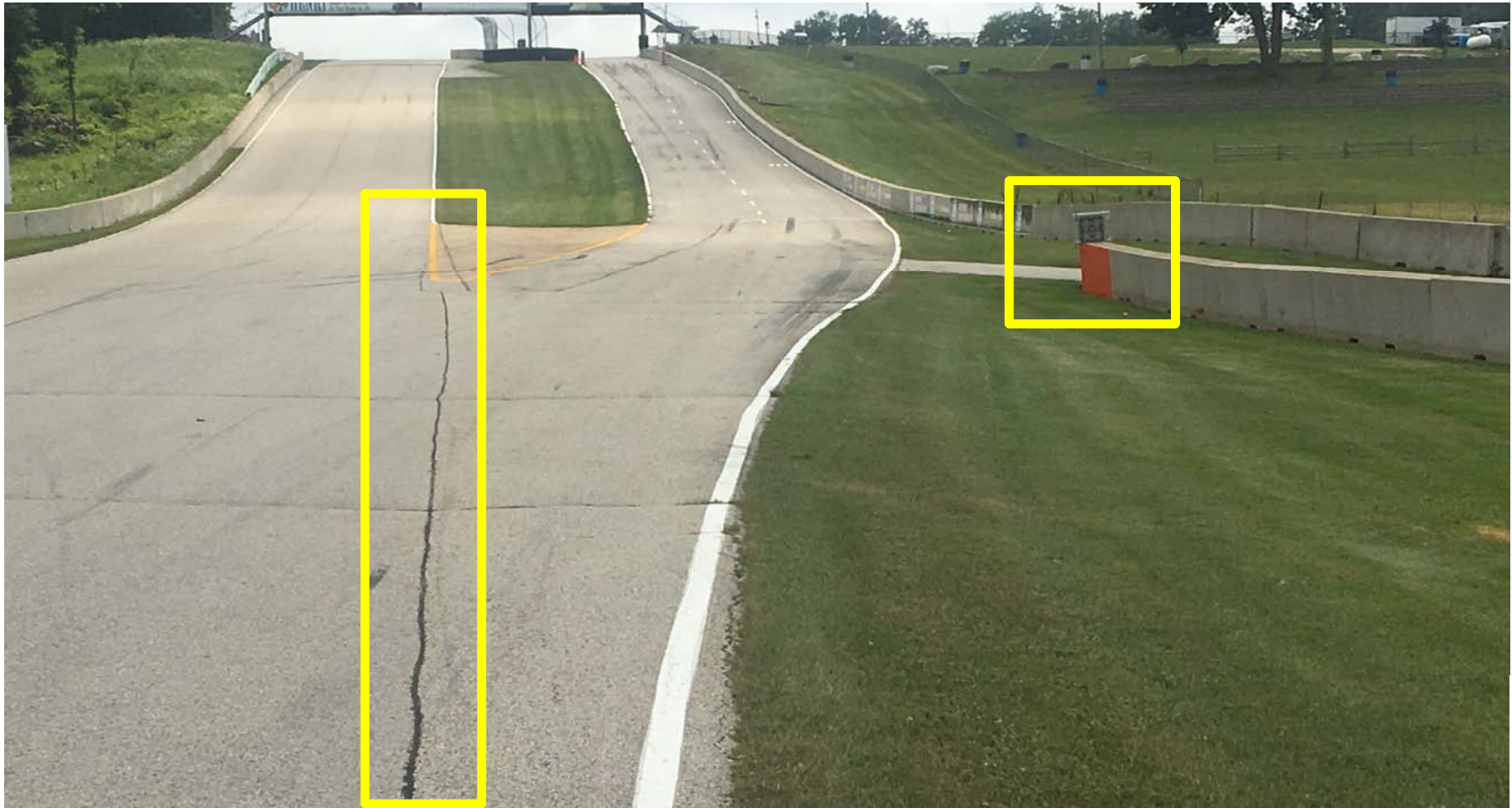
TURN 5 – BACK DOOR TO PITS



PIT ENTRY



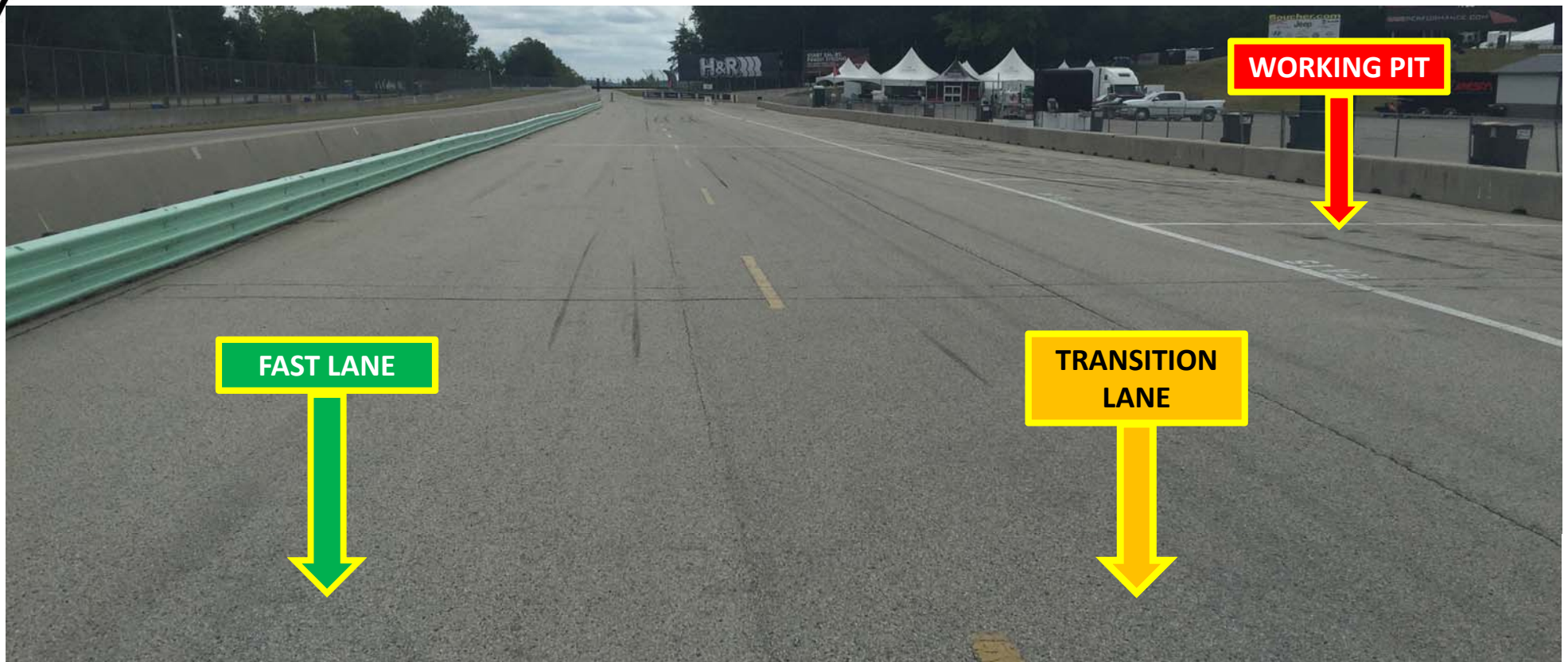
COMMIT POINT / PIT CLOSED LIGHT



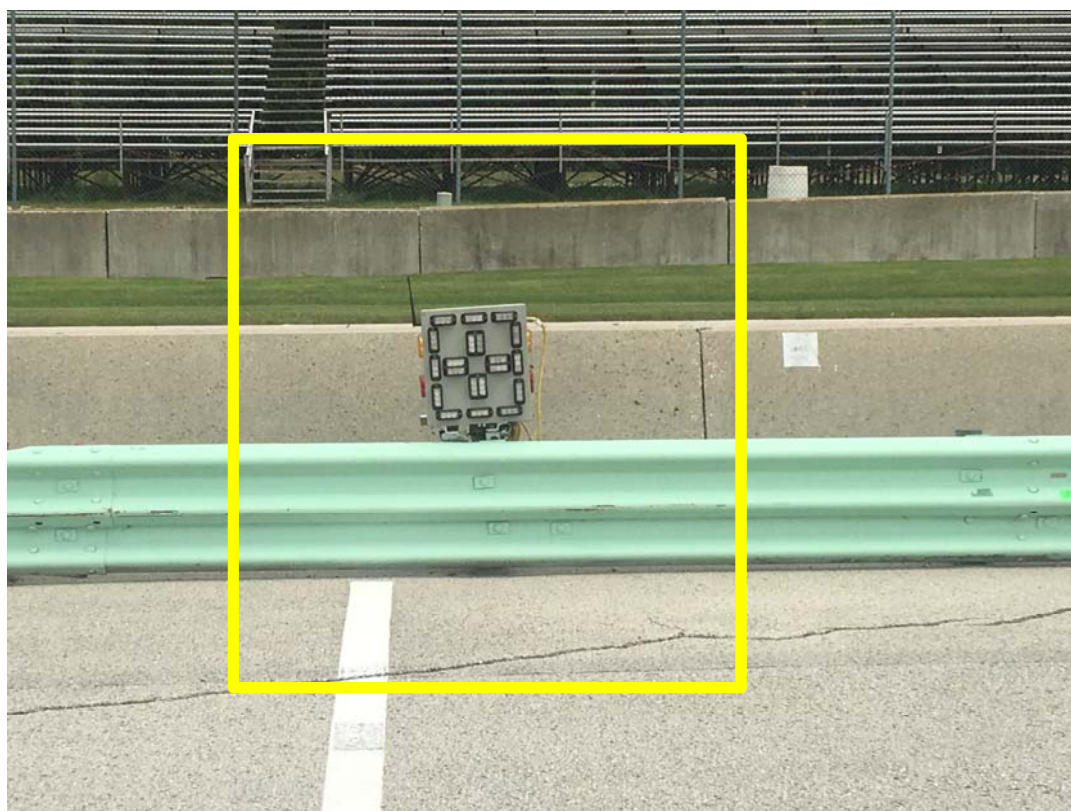
PLSL BEGINS



PIT LANE PROTOCOL



PIT CLOSED LIGHT - PIT CENTER



TRACK LIMITS TURN ONE



TRACK LIMITS - TURN 5



TRACK LIMITS TURN 8



TRACK LIMITS TURN 12/CANADA CORNER



PIT STOP INFO



- **Speed Limit Pit Lane: 60 km/h – All Sessions**
- **Pit Lane Distance (Line to Line): 25,536 inches / 2,128.0 feet**
Takes 39 seconds at 60Km/h
- **Obligatory Pit Stop Total Time for Two Driver Teams: 99 seconds**
- **Obligatory Pit Stop Total Time for Solo Driver Teams: 102 seconds**
- **Obligatory stop must take place between the 20:00:00 and 29:59 mark of event**
- **Maintain safe speed leaving pit lane, no excessive loss of speed**



STAY CONNECTED

#IMSA



@IMSA



@IMSA_RACING



@IMSA



IMSA OFFICAL