





VIRGINIA IS FOR **RACING** LO♥ERS™ — GRAND PRIX —

STREAMING LIVE ON TRACKPASS

SUN | OCT 10 | 2:10PM ET



TRACKPASS ON **GOLD**

#IMSA

SERIES CONTACTS

Beaux Barfield	Race Director	(832) 260-1032
Mike Murphy	Series Manager	(386) 872-2857
Paul Walter	Sporting Regulations	(614) 598-6783
Brian Wilson	Administration	(386) 281-9494
Mike Neely	Paddock Logistics	(386) 308-8933
Eric Haverson	Technical	(386) 562-7214
Johnny Knotts	Pit Lane Supervisor	(813) 763-4669
David Pees	Timing & Scoring	(386) 308-8866
Tracy Sanderson	Medical Liaison	(813) 486-4854

EVENT OPERATIONS PROTOCOL REMINDER

REVIEW DOCUMENT

- Found on the IMSA Competitors landing page

IMPORTANT UPDATES

- Masks are required in enclosed areas/spaces, at all times, regardless of vaccination status.
- Masks are recommended while outdoors, at all times, regardless of vaccination status



MERG / EVENT REMINDERS

MERG:

DURING EVENT USES

- Engine Change
- Discontinue participation in Event before Race

AFTER QUALIFYING

- Request to change one (1) tire
- Notification of four (4) tire change
- Nominate Starting Driver within 30 minutes if you did not participate in qualifying

DURING RACE

- Retire from Race

GOLF CARTS:

- PERMITTED IN THE PADDOCK WITH APPROVED "OFF ROAD" PASS FROM VIR
- "Off Road" Form application: <https://rockhousepartners.wufoo.com/forms/w7a0q9/>

DRIVER AND TEAM MANAGER BRIEFING

TEAM MANAGERS ONLY – FRIDAY, 10/8 11:00 AM

TEAM MANAGERS AND DRIVERS ONLY – SUNDAY, 10/10 9:30 AM

LOCATION –

- Track Meeting Room (Downstairs)
- The on-site briefing is for the listed participants only and is not mandatory.
- Please maintain social distancing and proper PPE.

PLEASE NOTE: Any topics discussed in the briefing not contained in this deck will be acted on by Race Control during the Event.

BRIEFING LOCATION



2022 DRIVER COMBINE

The Driver Combine is a one-stop shop for drivers to complete any or ALL 2022 Driver Membership/Annual Credential requirements

- Submit the Driver Application
- Take an ImPACT Test
- Complete an annual physical
 - The annual physical is \$100 and must be paid in CASH at the time of the exam
- \$950 Payment for the 2022 Driver Application is not required to participate in Driver Combine (Credentials will not be printed at the Driver Combine if payment is not submitted)

MAKE YOUR APPOINTMENT STARTING SEPTEMBER 28, 2021!

Visit the Driver Portal at [IMSA.com/COMPETITORS](https://www.imsa.com/COMPETITORS) to schedule an appointment

Walk-ins are welcome, appointments are given priority

FOR ANY QUESTIONS PLEASE EMAIL ASHLEE RICE: ARICE@IMSA.COM

November 10-12, 2021

Wednesday 8:00AM - 5:00PM

Thursday 8:00AM - 5:00PM

Friday 8:00AM - 3:00PM

LOCATION

Michelin Raceway Road Atlanta

Administration Classroom

IMSA WEATHERTECH PADDOCK CLUB

Michelin and IMSA would like to extend two (2) IMSA WeatherTech Paddock Club passes to each IMSA Michelin Pilot Challenge team for the Michelin GT Challenge @ VIR event weekend.

Team Entrants/Representatives will receive an email from [Rebecca Rawski](#) with additional information on guest access.

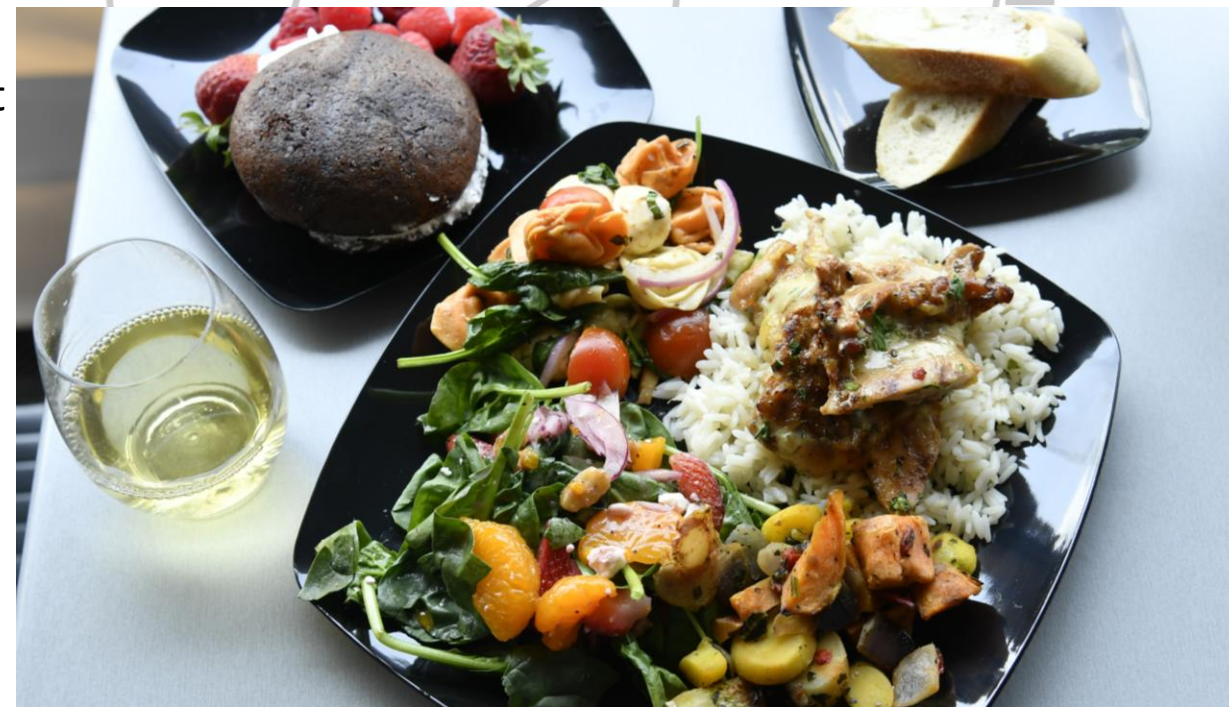
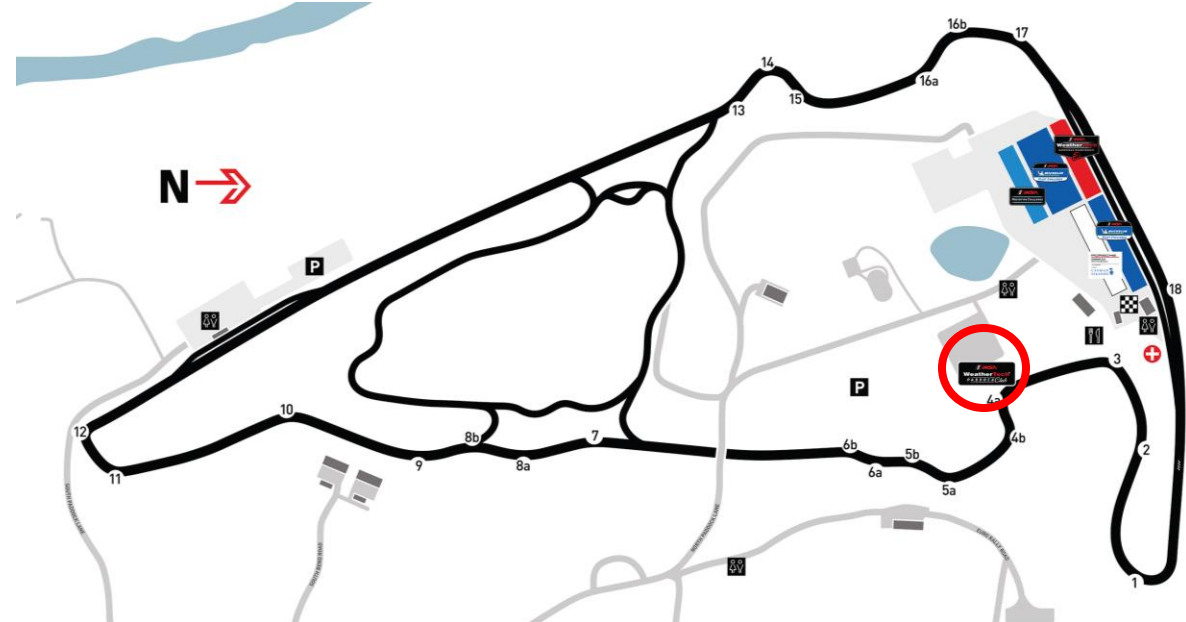
Physical WeatherTech Paddock Club credentials will be dropped off at Team Transporters on Friday, October 8. Click to add text

LOCATION

- Located in the Vendor Midway/Skid Pad area
- Views of NASCAR Bend and Left Hook

HOURS OF OPERATION

- SATURDAY, OCTOBER 9
 - 8:00 AM – 3:30 PM
- SUNDAY, OCTOBER 10
 - 8:00 AM – 4:30 PM



SAVE THE DATE



FRIDAY, NOVEMBER, 12
BRASELTON, GEORGIA

QUESTIONS?
CONTACT AWARDS@IMSA.COM

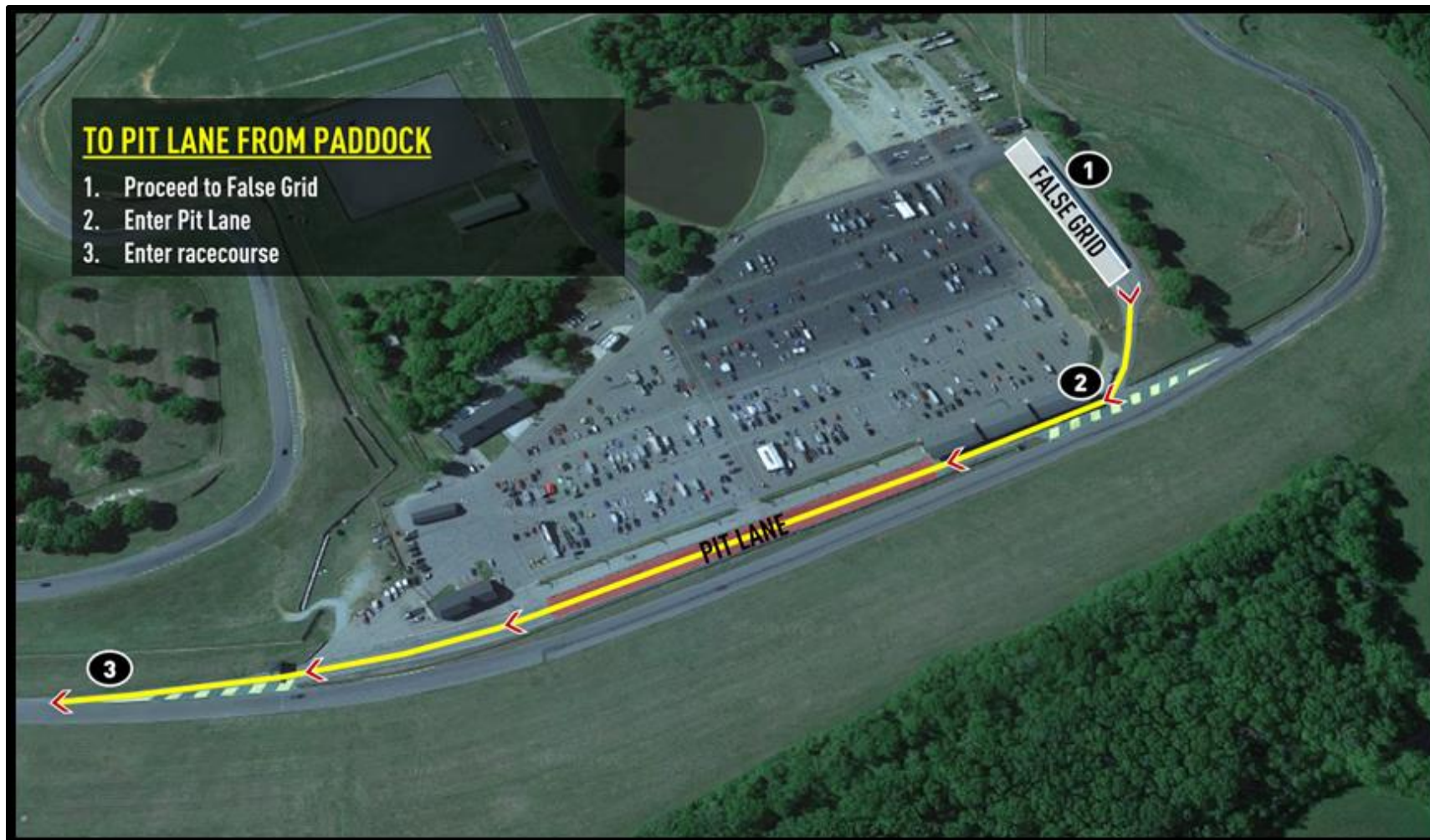


Paddock Locations / REMINDER

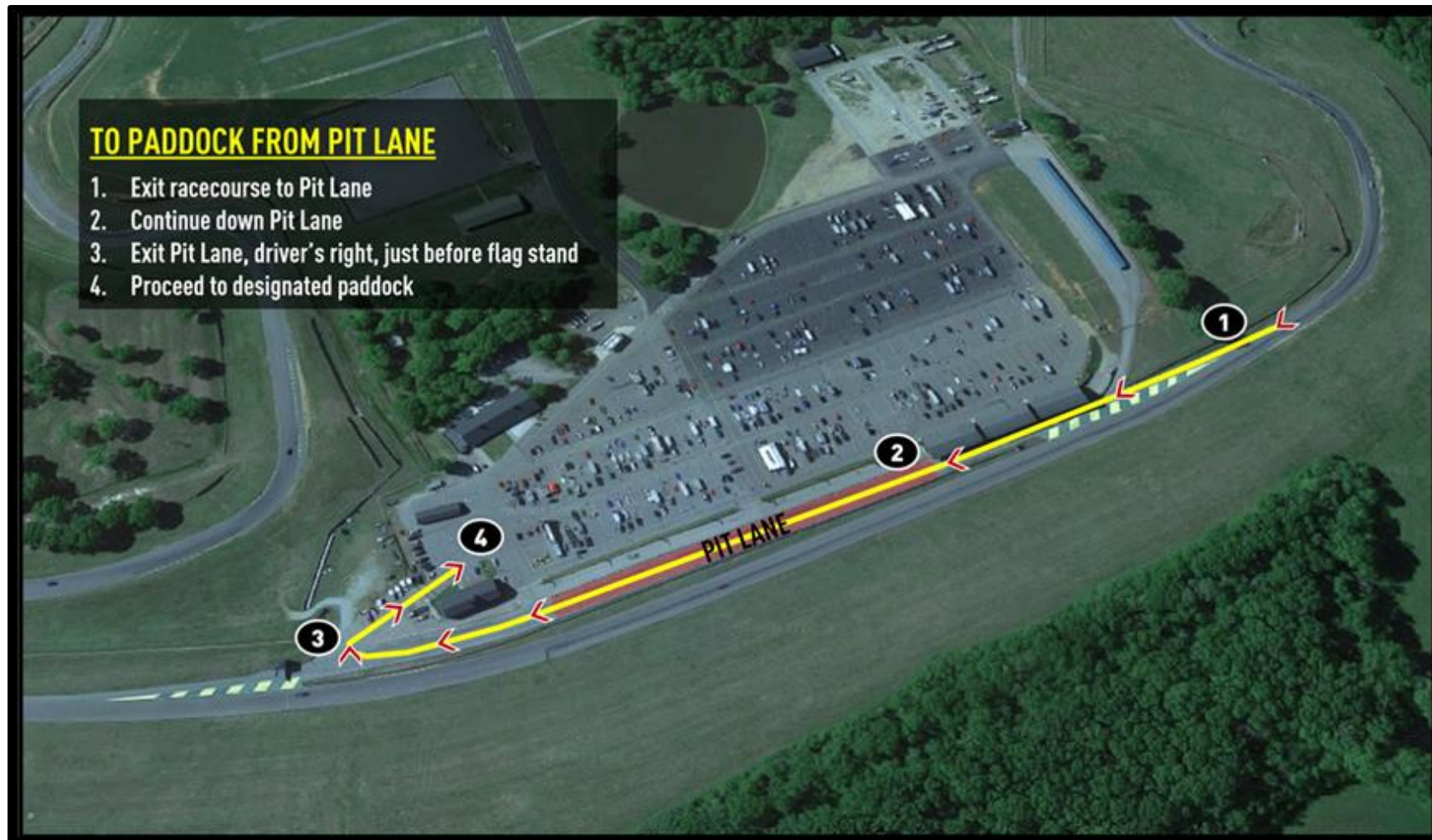
PLEASE ENSURE THAT
TEAM PADDOCK SPACES DO
NOT IMPEDE THE
DESIGNATED FIRE LANES IN
THE PADDOCK



Paddock to Pit Lane



RETURN TO PADDOCK

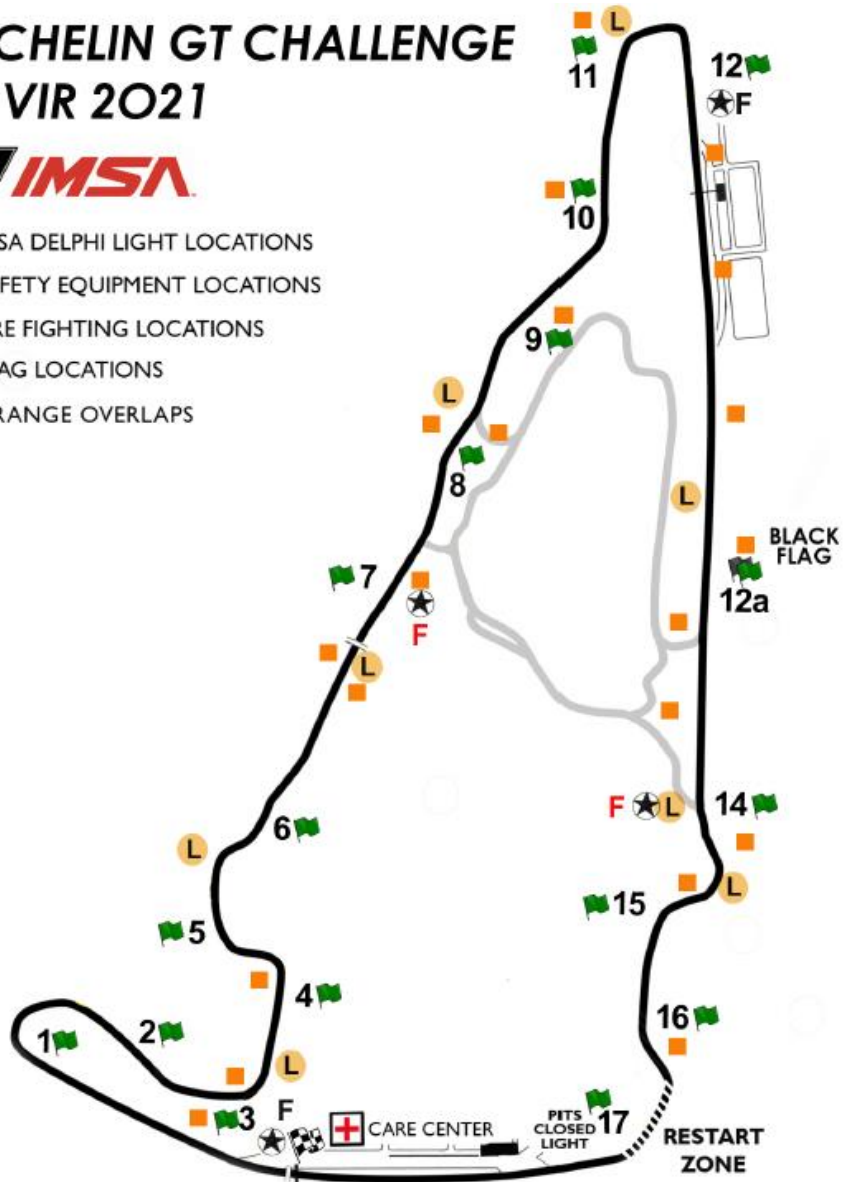


OFFICIAL TRACK MAP

MICHELIN GT CHALLENGE AT VIR 2021



- IMSA DELPHI LIGHT LOCATIONS
- SAFETY EQUIPMENT LOCATIONS
- FIRE FIGHTING LOCATIONS
- FLAG LOCATIONS
- ORANGE OVERLAPS



PIT COMMIT

MUST HAVE PART OF CAR TOUCHING, OR BE BEYOND THE SEAM THAT DIVIDES THE RACETRACK FROM PIT ENTRY PRIOR TO THE PIT CLOSED LIGHT ILLUMINATING IN ORDER TO BE CONSIDERED COMMITTED TO THE PITS.



PIT LANE SPEED LIMIT

PIT LANE SPEED LIMIT
BEGINS AT RED PYLONS
PIT CLOSED LIGHT ON
TIRE STACK

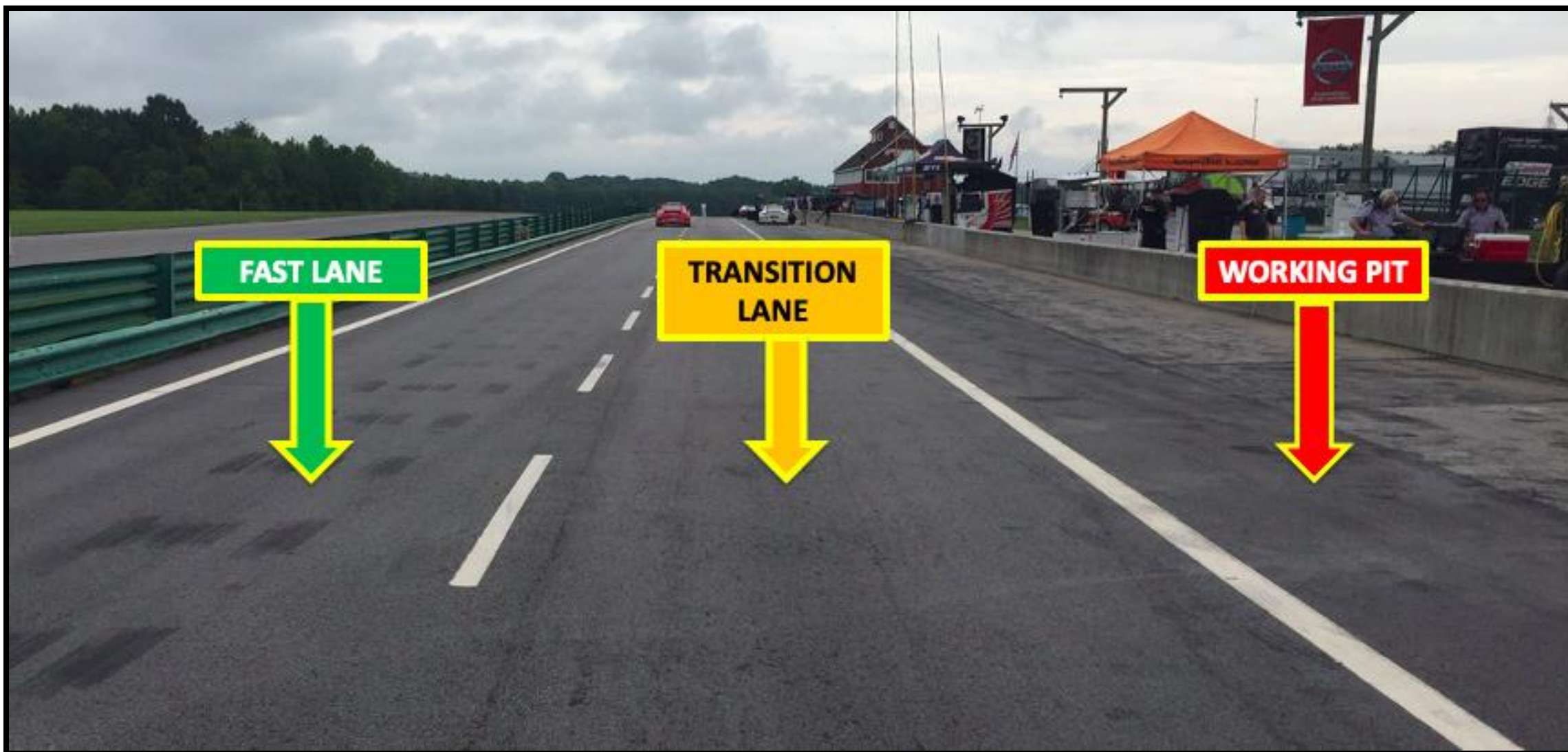


PIT CLOSED REPEATER LIGHT

TWO, POSITIONED ON PIT
WALL FOR TEAM MANAGERS



PIT LANE PROTOCOL



PIT EXIT CLOSED

PIT EXIT CLOSED LIGHT



PIT EXIT / PENALTY BOX

PIT EXIT / PENALTY BOX



PIT EXIT MERGE

**CARS EXITING THE PIT LANE MUST
REMAIN TWO WHEELS TO THE
RIGHT OF THE MERGE LINE UNTIL
IT ENDS**

MERGE SAFELY INTO TURN 1

**RESPECT THE SPEED DIFFERENCE
OF THOSE ALREADY ON TRACK**



ORANGE OVERLAPS



ORANGE OVERLAPS



ORANGE OVERLAPS



ORANGE OVERLAPS



INITIAL RACE START

- **TWO (2) SAFETY CARS ARE USED TO MANAGE THE GAP BETWEEN GS AND TCR DURING THE INITIAL START OF THE RACE (SPLIT START).**
- **THE RESPECTIVE POLESITTERS OF GS AND TCR WILL BE GIVEN SPECIFIC INSTRUCTIONS REGARDING PROCEDURES AND EXPECTATIONS REGARDING THE START OF THE RACE.**

INITIAL RACE START

- TWO (2) FORMATION LAPS
- STAY WITH SAFETY CARS UNTIL SAFETY CARS ENTER PITS
- LEADERS MAINTAIN SAFETY CAR SPEED UNTIL START
 - SPLIT START INCORPORATING TWO SAFETY CARS (GS AND TCR)
- PACK UP / PAIR UP OUT OF TURN 12
- MUST MAINTAIN COLUMN POSITIONS AND LANES UNTIL CROSSING THE START LINE
- ACCELERATION POINT (POLESITTER)
- JUMP / FALSE START REVIEWS
 - Gaps
 - Timed / Early Acceleration
 - Out of Line
 - Column Passing
 - It is NOT permitted to move from one column to the other prior to the Start line

STANDARD FULL COURSE YELLOW

FAILURE TO MAINTAIN PROPER SAFETY CAR SPEED AND CORRECT GAPS BETWEEN CARS, OR OTHERWISE INITIATE MANIPULATIVE ACTION TO GAP CARS, IS PROHIBITED AND SUBJECT TO PENALTY.

- **PITS CLOSED**
- **FULL COURSE YELLOW**
- **LEADER – SAFETY CAR SPEED**
- **SAFETY CAR DISPATCHED FROM PIT OUT TO OVERALL LEADER**
- **PASS-AROUND (NO TIRE SCRUBBING)**
- **PITS OPEN (GS)**
- **PITS OPEN (TCR)**
- **EMERGENCY SERVICE CARS MUST D-T (NO GUARANTEE OF YELLOW)**
 - Failure to do required D-T: Stop plus 10 seconds
 - Non-emergency service taken: Stop plus 60 seconds
- **FINAL WAVE-BY (NO TIRE SCRUBBING)**
 - Cars with class leader behind - pull out, pass line and Safety Car
- **GS CLASS SPLIT**
- **RESTART**
- **NOT IN EFFECT DURING FINAL 30 MINUTES OF A RACE**

SHORT FULL COURSE YELLOW

FAILURE TO MAINTAIN PROPER SAFETY CAR SPEED AND CORRECT GAPS BETWEEN CARS, OR OTHERWISE INITIATE MANIPULATIVE ACTION TO GAP CARS, IS PROHIBITED AND SUBJECT TO PENALTY.

(FIRST FCY WITHIN 15 MINUTES OF START OR RESTART FROM A STANDARD YELLOW, OR ANY DURING FINAL 30 MINUTES OF A RACE)

- **PITS CLOSED**
- **FULL COURSE YELLOW**
- **LEADER – SAFETY CAR SPEED**
- **SAFETY CAR DISPATCHED FROM PIT OUT TO OVERALL LEADER**
- **PASS-AROUND BEGINS (NO TIRE SCRUBBING)**
- **PITS REMAIN CLOSED**
- **NO FINAL WAVE-BY**
- **GS CLASS SPLIT**
- **RESTART**
- **PITS OPEN AFTER ALL CARS PASS PIT-IN, COMING TO THE RESTART**
- **EMERGENCY SERVICE CARS MUST D-T**
 - FAILURE TO DO REQUIRED D-T: STOP PLUS 10 SECONDS
 - NON EMERGENCY SERVICE TAKEN: STOP PLUS 60 SECONDS

RESTART ACCELERATION ZONE

RESTART ACCELERATION ZONE IS
TURN 17



ON TRACK

- **RESTARTS**
- **LOCAL YELLOWS**
- **FLASHING LIGHTS**
- **BLOCKING / DEFENDING INCREASES RESPONSIBILITY**
- **CONTACT**
 - Responsibility
 - Class racing
 - Multi-class incidents
- **MULTI-CLASS COEXISTENCE**
 - Awareness
 - Coexist

