



# VIRGINIA INTERNATIONAL RACEWAY



SAT | OCT 9 | 12:00PM ET



**LIVE ON NBC**

**#IMSA**

# SERIES CONTACTS

<b>Beaux Barfield</b>	Race Director	(832) 260-1032
<b>Geoff Carter</b>	Sr. Director Series Platforms	(386) 868-6624
<b>Paul Walter</b>	Sporting Regulations	(614) 598-6783
<b>Mike Neely</b>	Paddock Logistics	(386) 308-8933
<b>Eric Haverson</b>	Technical	(386) 562-7214
<b>Johnny Knotts</b>	Pit Lane Supervisor	(813) 763-4669
<b>Carol Mueller</b>	Administration	(386) 262-8932
<b>David Pees</b>	Timing & Scoring	(386) 308-8866
<b>Tracy Sanderson</b>	Medical Liaison	(813) 486-4854

# EVENT OPERATIONS PROTOCOL REMINDER

## REVIEW DOCUMENT

- Found on the IMSA Competitors landing page

## IMPORTANT UPDATES

- Masks are required in enclosed areas/spaces, at all times, regardless of vaccination status.
- Masks are recommended while outdoors, at all times, regardless of vaccination status



# MERG / EVENT REMINDERS

## MERG:

### DURING EVENT USES

- Engine Change
- Discontinue participation in Event before Race

### AFTER QUALIFYING

- Request to change one (1) tire
- Notification of four (4) tire change
- Nominate Starting Driver within 30 minutes if you did not participate in qualifying

### DURING RACE

- Retire from Race

## GOLF CARTS:

- PERMITTED IN THE PADDOCK WITH APPROVED "OFF ROAD" PASS FROM VIR
- "Off Road" Form application: <https://rockhousepartners.wufoo.com/forms/w7a0q9/>

# **DRIVER AND TEAM MANAGER BRIEFING**

**TEAM MANAGERS ONLY – THURSDAY, 10/07 2:30 PM**

**TEAM MANAGERS AND DRIVERS ONLY – SATURDAY, 10/9 8:00 AM**

## **LOCATION –**

- Track Meeting Room (Downstairs)
- The on-site briefing is for the listed participants only and is not mandatory.
- Please maintain social distancing and proper PPE.

PLEASE NOTE: Any topics discussed in the briefing not contained in this deck will be acted on by Race Control during the Event.

# BRIEFING LOCATION



# 2022 DRIVER COMBINE

The Driver Combine is a one-stop shop for drivers to complete any or ALL 2022 Driver Membership/Annual Credential requirements

- Submit the Driver Application
- Take an ImPACT Test
- Complete an annual physical
  - The annual physical is \$100 and must be paid in CASH at the time of the exam
- \$950 Payment for the 2022 Driver Application is not required to participate in Driver Combine (Credentials will not be printed at the Driver Combine if payment is not submitted)

## MAKE YOUR APPOINTMENT STARTING SEPTEMBER 28, 2021!

Visit the Driver Portal at [IMSA.com/COMPETITORS](https://imsa.com/COMPETITORS) to schedule an appointment

Walk-ins are welcome, appointments are given priority

**FOR ANY QUESTIONS PLEASE EMAIL ASHLEE RICE: [ARICE@IMSA.COM](mailto:ARICE@IMSA.COM)**

## November 10-12, 2021

Wednesday 8:00AM - 5:00PM

Thursday 8:00AM - 5:00PM

Friday 8:00AM - 3:00PM

## LOCATION

Michelin Raceway Road Atlanta

Administration Classroom

# IMSA WEATHERTECH PADDOCK CLUB

Premium Entry IMSA WeatherTech Championship teams receive two (2) IMSA WeatherTech Paddock Club passes for each Event.

Team Entrants/Representatives will receive an email from [Rebecca Rawski](#) with additional information on guest access.

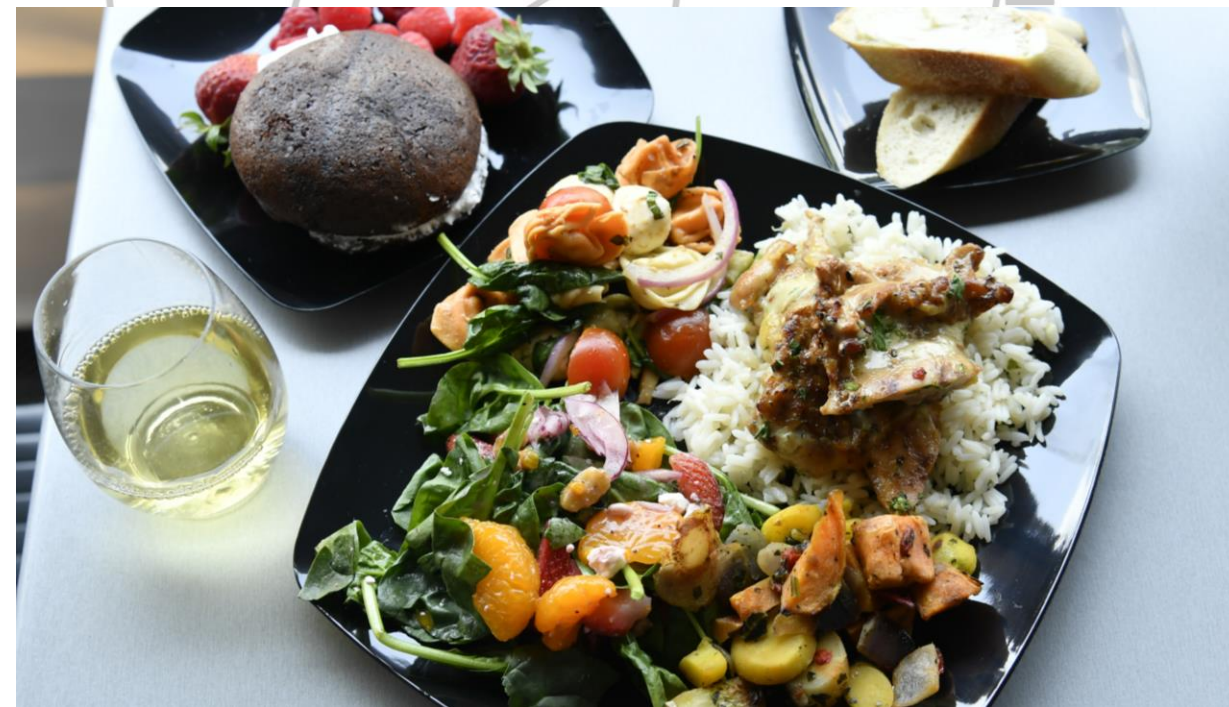
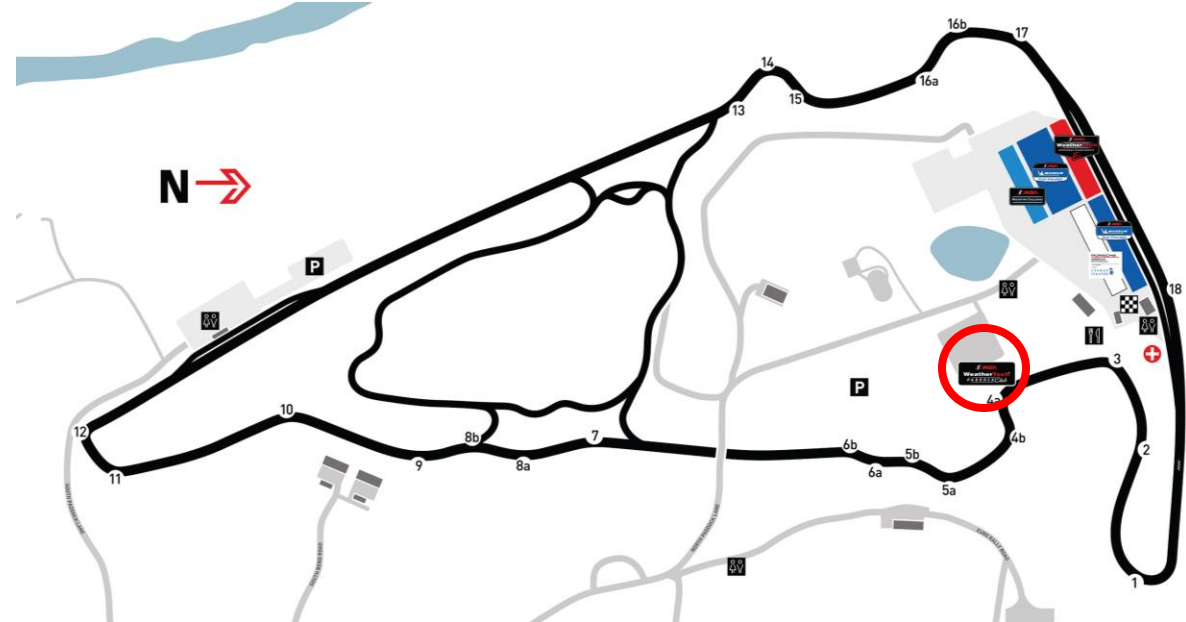
**Physical** WeatherTech Paddock Club credentials will be dropped off at Team Transporters on Friday, October 8.

## LOCATION

- Located in the Vendor Midway/Skid Pad area
- Views of NASCAR Bend and Left Hook

## HOURS OF OPERATION

- SATURDAY, OCTOBER 9
  - 8:00 AM – 3:30 PM
- SUNDAY, OCTOBER 10
  - 8:00 AM – 4:30 PM



SAVE  
THE  
DATE



SUNDAY, NOVEMBER 14  
BRASELTON, GEORGIA

QUESTIONS?  
CONTACT [AWARDS@IMSA.COM](mailto:AWARDS@IMSA.COM)

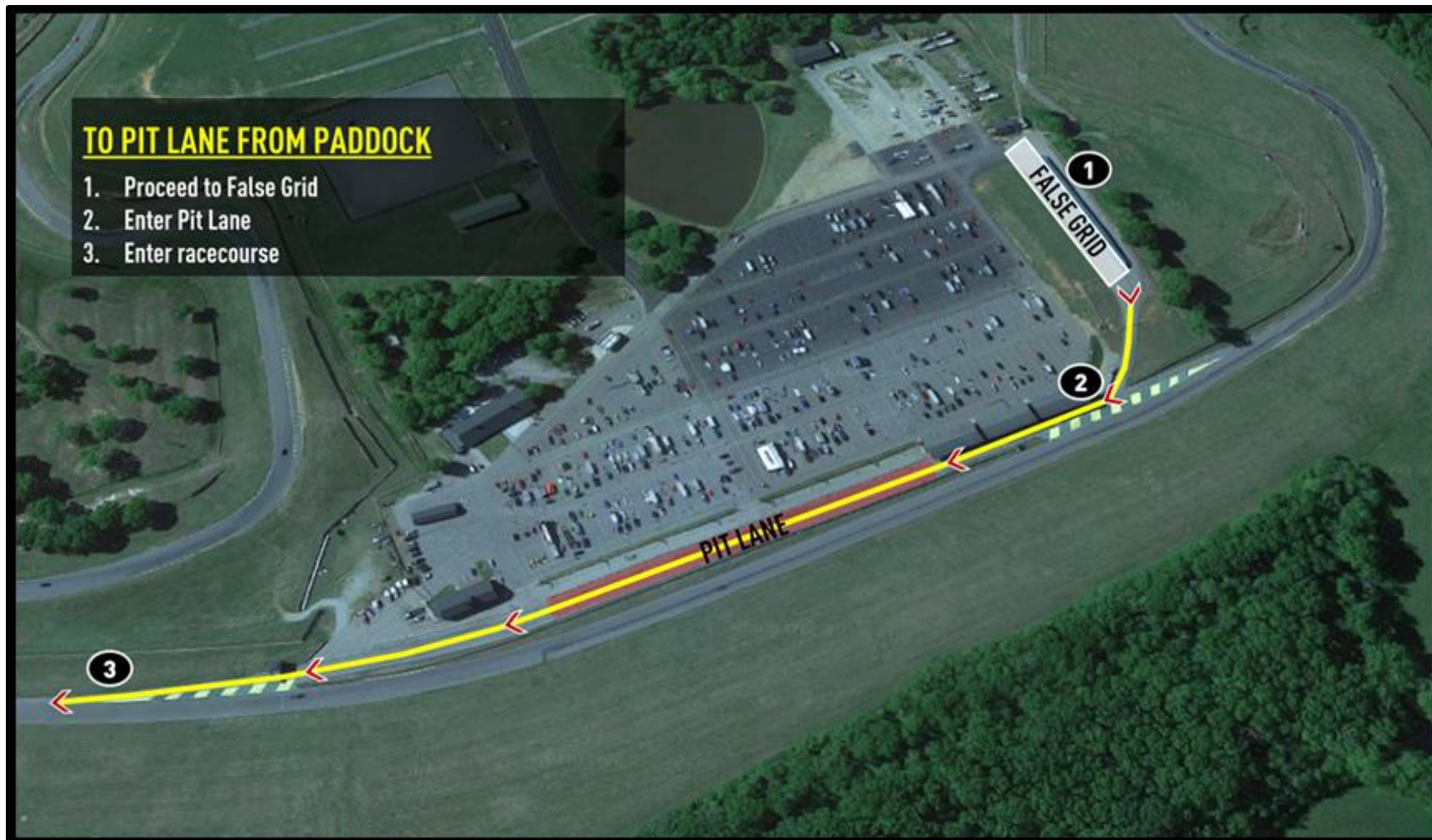


# Paddock Locations / REMINDER

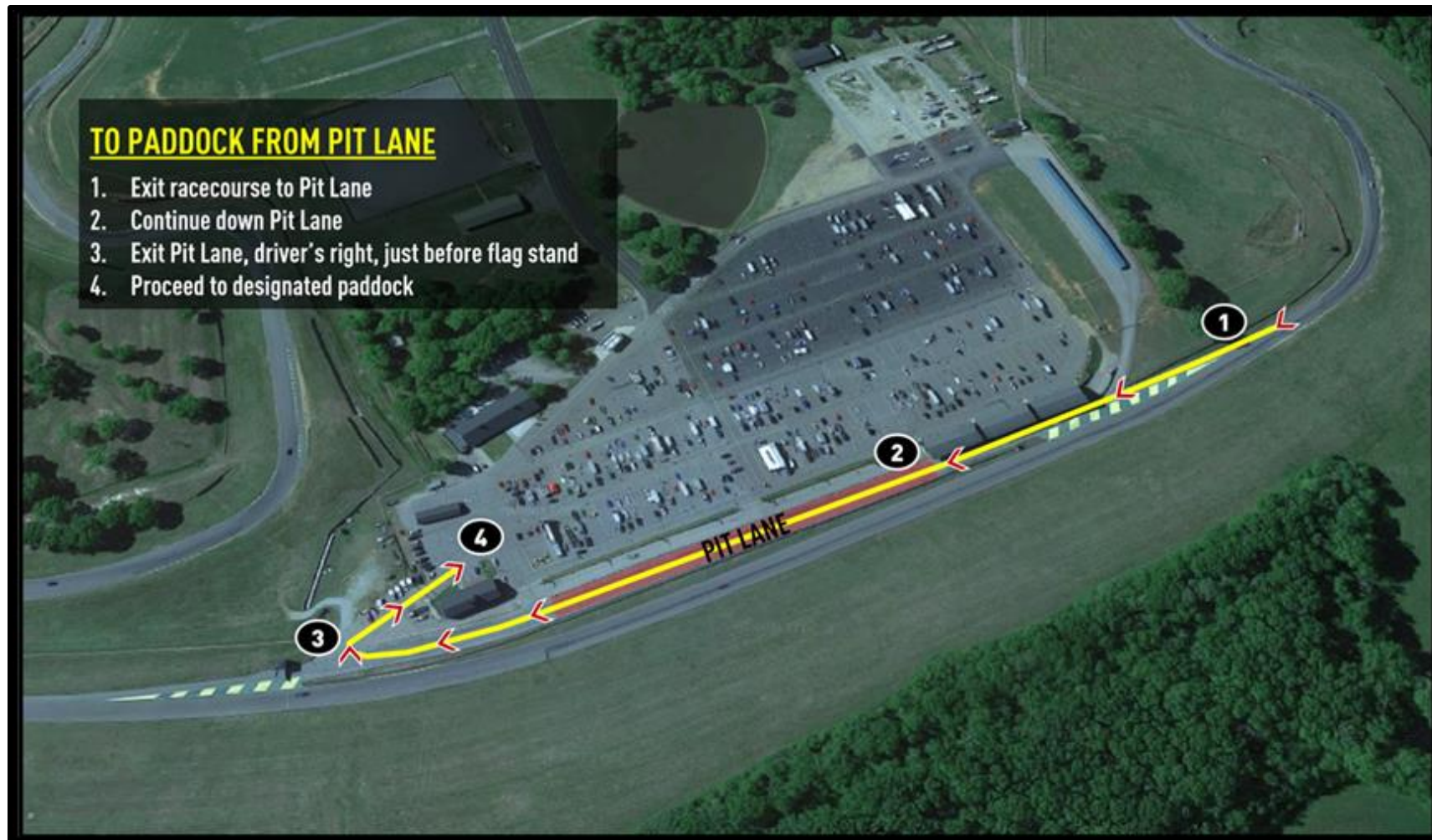
PLEASE ENSURE THAT  
TEAM PADDOCK SPACES DO  
NOT IMPEDE THE  
DESIGNATED FIRE LANES IN  
THE PADDOCK



# Paddock to Pit Lane



# RETURN TO PADDOCK

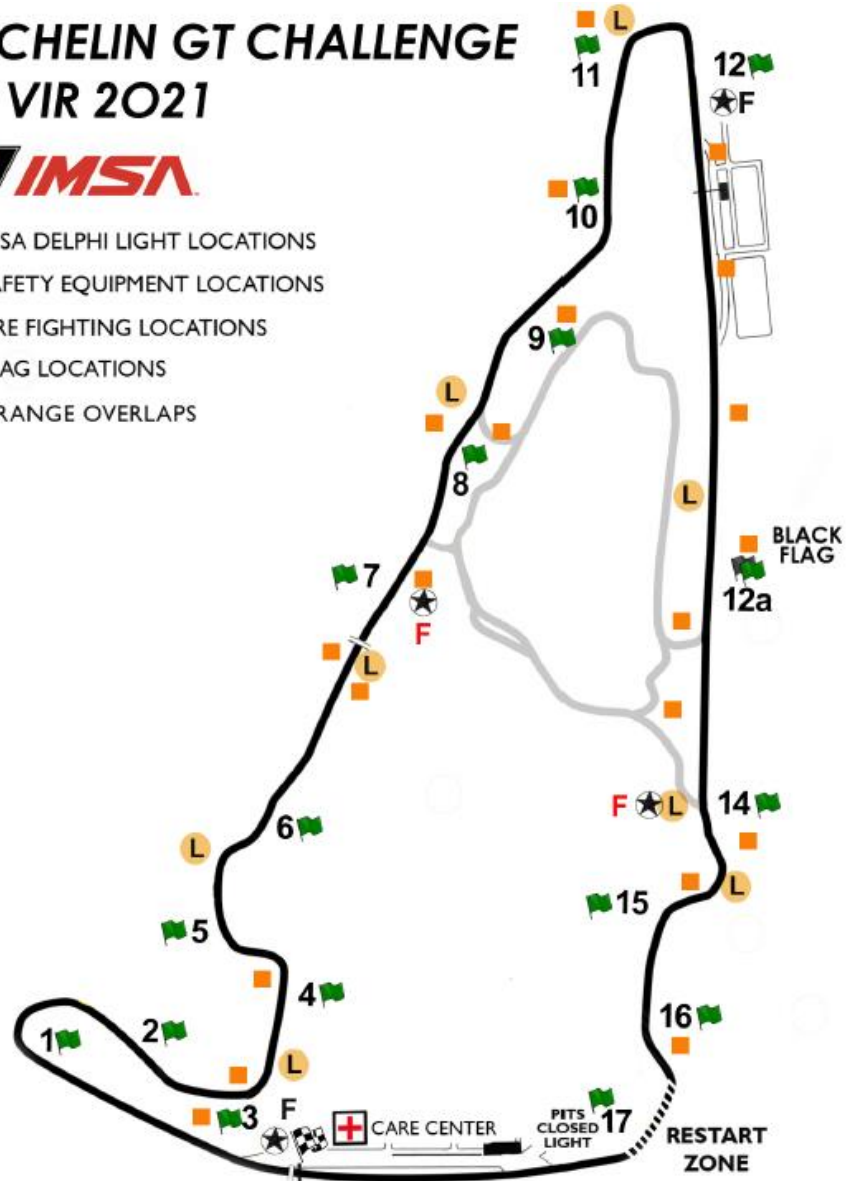


# OFFICIAL TRACK MAP

## MICHELIN GT CHALLENGE AT VIR 2021



- IMSA DELPHI LIGHT LOCATIONS
- SAFETY EQUIPMENT LOCATIONS
- FIRE FIGHTING LOCATIONS
- FLAG LOCATIONS
- ORANGE OVERLAPS



# PIT COMMIT

- **MUST HAVE PART OF CAR TOUCHING, OR BE BEYOND THE SEAM THAT DIVIDES THE RACETRACK FROM PIT ENTRY PRIOR TO THE PIT CLOSED LIGHT ILLUMINATING IN ORDER TO BE CONSIDERED COMMITTED TO THE PITS.**



# PIT LANE SPEED LIMIT

- PIT LANE SPEED LIMIT BEGINS AT RED PYLONS
- PIT CLOSED LIGHT ON TIRE STACK



# PIT CLOSED REPEATER LIGHT

- TWO, POSITIONED ON PIT WALL FOR TEAM MANAGERS



# PIT LANE PROTOCOL



# PIT EXIT CLOSED

- PIT EXIT CLOSED LIGHT



# PIT EXIT / PENALTY BOX

- PIT EXIT / PENALTY BOX



# PIT EXIT MERGE

- CARS EXITING THE PIT LANE MUST REMAIN TWO WHEELS TO THE RIGHT OF THE MERGE LINE UNTIL IT ENDS
- MERGE SAFELY INTO TURN 1
- RESPECT THE SPEED DIFFERENCE OF THOSE ALREADY ON TRACK



# ORANGE OVERLAPS



# ORANGE OVERLAPS



# ORANGE OVERLAPS



# ORANGE OVERLAPS



# INITIAL RACE START

- ONE (1) SAFETY CAR USED DURING THE INITIAL START OF THE RACE.
- THE POLESITTER OF GTLM WILL BE GIVEN SPECIFIC INSTRUCTIONS REGARDING PROCEDURES AND EXPECTATIONS REGARDING THE START OF THE RACE. GTD DOES NOT HAVE ITS OWN POLE SIDE.

# INITIAL RACE START

- TWO (2) FORMATION LAPS
- STAY WITH SAFETY CAR UNTIL SAFETY CAR ENTERS PIT LANE
- LEADERS MAINTAIN SAFETY CAR SPEED UNTIL START
- PACK UP FIRST TIME BY / PAIR UP OUT OF TURN 12
- MUST MAINTAIN COLUMN POSITIONS AND LANES UNTIL CROSSING THE START LINE
- ACCELERATION POINT (POLESITTERS)
- JUMP / FALSE START REVIEWS
  - Gaps
  - Timed / Early Acceleration
  - Out of Line
  - Column Passing
  - It is NOT permitted to move from one column to the other prior to Start line

# STANDARD FULL COURSE YELLOW

FAILURE TO MAINTAIN PROPER SAFETY CAR SPEED AND CORRECT GAPS BETWEEN CARS, OR OTHERWISE INITIATE MANIPULATIVE ACTION TO GAP CARS, IS PROHIBITED AND SUBJECT TO PENALTY.

- **PITS CLOSED**
- **FULL COURSE YELLOW**
- **LEADER – SAFETY CAR SPEED**
- **SAFETY CAR DISPATCHED FROM PIT OUT TO OVERALL LEADER**
- **PASS-AROUND (NO TIRE SCRUBBING)**
- **PITS OPEN (GTLM)**
- **PITS OPEN (GTD)**
- **EMERGENCY SERVICE CARS MUST D-T (NO GUARANTEE OF YELLOW)**
  - Failure to do required D-T: Stop plus 10 seconds
  - Non-emergency service taken: Stop plus 60 seconds
- **FINAL WAVE-BY (NO TIRE SCRUBBING)**
  - Cars with class leader behind - pull out, pass line and safety car
- **GTLM CLASS SPLIT**
- **RESTART**
- **NOT IN EFFECT DURING FINAL 30 MINUTES OF A RACE**

# SHORT FULL COURSE YELLOW

FAILURE TO MAINTAIN PROPER SAFETY CAR SPEED AND CORRECT GAPS BETWEEN CARS, OR OTHERWISE INITIATE MANIPULATIVE ACTION TO GAP CARS, IS PROHIBITED AND SUBJECT TO PENALTY.

- (FIRST FCY WITHIN 15 MINUTES OF START OR RESTART FROM A STANDARD YELLOW, OR ANY DURING FINAL 30 MINUTES OF A RACE)
  - **PITS CLOSED**
  - **FULL COURSE YELLOW**
  - **LEADER – SAFETY CAR SPEED**
  - **SAFETY CAR DISPATCHED FROM PIT OUT TO OVERALL LEADER**
  - **PASS-AROUND BEGINS (NO TIRE SCRUBBING)**
  - **PITS REMAIN CLOSED**
  - **NO FINAL WAVE-BY**
  - **GTLM CLASS SPLIT**
  - **RESTART**
  - **PITS OPEN AFTER ALL CARS PASS PIT-IN, COMING TO THE RESTART**
  - **EMERGENCY SERVICE CARS MUST D-T**
    - FAILURE TO DO REQUIRED D-T: STOP PLUS 10 SECONDS
    - NON-EMERGENCY SERVICE TAKEN: STOP PLUS 60 SECONDS

# RESTART ACCELERATION ZONE

- RESTART ACCELERATION ZONE IS TURN 17



# ON TRACK

- **RESTARTS**
- **LOCAL YELLOWS**
- **BLOCKING / DEFENDING INCREASES RESPONSIBILITY**
- **CONTACT**
  - Responsibility
  - Class racing
  - Multi-class incidents
- **MULTI-CLASS COEXISTENCE**
  - Awareness
  - Coexist

