



NOLA

MOTORSPORTS PARK

WELCOME

SERIES CONTACTS

Beaux Barfield	Race Director	(832) 260-1032
Chris Ward	Series Manager	(248) 252-8524
Craig Jamison	Parts Manager	(248) 943-7343
Martin Lilly	Hospitality Manager	(323) 527-2179
Carol Mueller	Administration	(386) 262-8932
Mike Richter	At-Track Admin	(386) 453-7788
Cory Posocco	Paddock Logistics	(386) 310-5770
Eric Haverson	Technical	(386) 562-7214
Johnny Knotts	Pit Lane Supervisor	(813) 763-4669
David Pees	Timing & Scoring	(386) 308-8866
Roy Spielmann	Track Services	(414) 702-0905

EVENT PROTOCOLS REMINDER

REVIEW DOCUMENT

- Found on the IMSA Competitors landing page
 - <https://www.imsa.com/competitors/>

IMPORTANT UPDATES

- Mask wear will not be required at NOLA
- Participants are encouraged to review/apply Event Operations Protocols



EVENT INFORMATION

Useful resources

IMSA Competitor Landing Page:

<https://www.imsa.com/competitors/>

- Team Portal
- SR
- Safety Inspection Schedule
- Marketing & Branding Page

IMSA Notice Board: <http://results.imsa.com/>

The screenshot shows the IMSA Timing Results website. At the top left is the IMSA logo and the text "TIMING RESULTS". At the top right are links for "NOTICEBOARD" and "LIVE TIMING". Below the header, there are dropdown menus for "SEASON" (set to 2022) and "EVENT" (set to Daytona International Speedway). The main content area is titled "DAYTONA INTERNATIONAL SPEEDWAY, SEASON 2022" and features a list of links for various championship points: "IMSA WEATHERTECH SPORTSCAR CHAMPIONSHIP", "CHAMPIONSHIP POINTS - OFFICIAL PDF", "CHAMPIONSHIP POINTS - PROVISIONAL PDF", "CHAMPIONSHIP POINTS - UNOFFICIAL PDF", "IMEC CHAMPIONSHIP POINTS - OFFICIAL PDF", "IMEC CHAMPIONSHIP POINTS - PROVISIONAL PDF", and "IMEC ROLEX 24 POINTS - OFFICIAL PDF". The background of the website shows a blurred image of a race track with an American flag.

MERG

During Event uses

- Engine Change
- Discontinue participation in Event before Race

After Qualifying

- Request to change one (1) tire
- Notification of more than one (1) tire change
- Nominate Starting Driver within 30 minutes if you did not participate in qualifying
- Request to change Starting Driver

During Race

- Retire from Race

PIT/GARAGE VEHICLES (SSR 20.3.4)

- Permitted types

- Golf Carts
- Tuggers
- ATVs



- Prohibited types

- Scooters
- EV Cycles/Scooters
- Motorcycles
- Bicycles
- Skateboards
- Rollerblades
- Drones
- Other non-motorized transportation



BRIEFING LOCATION

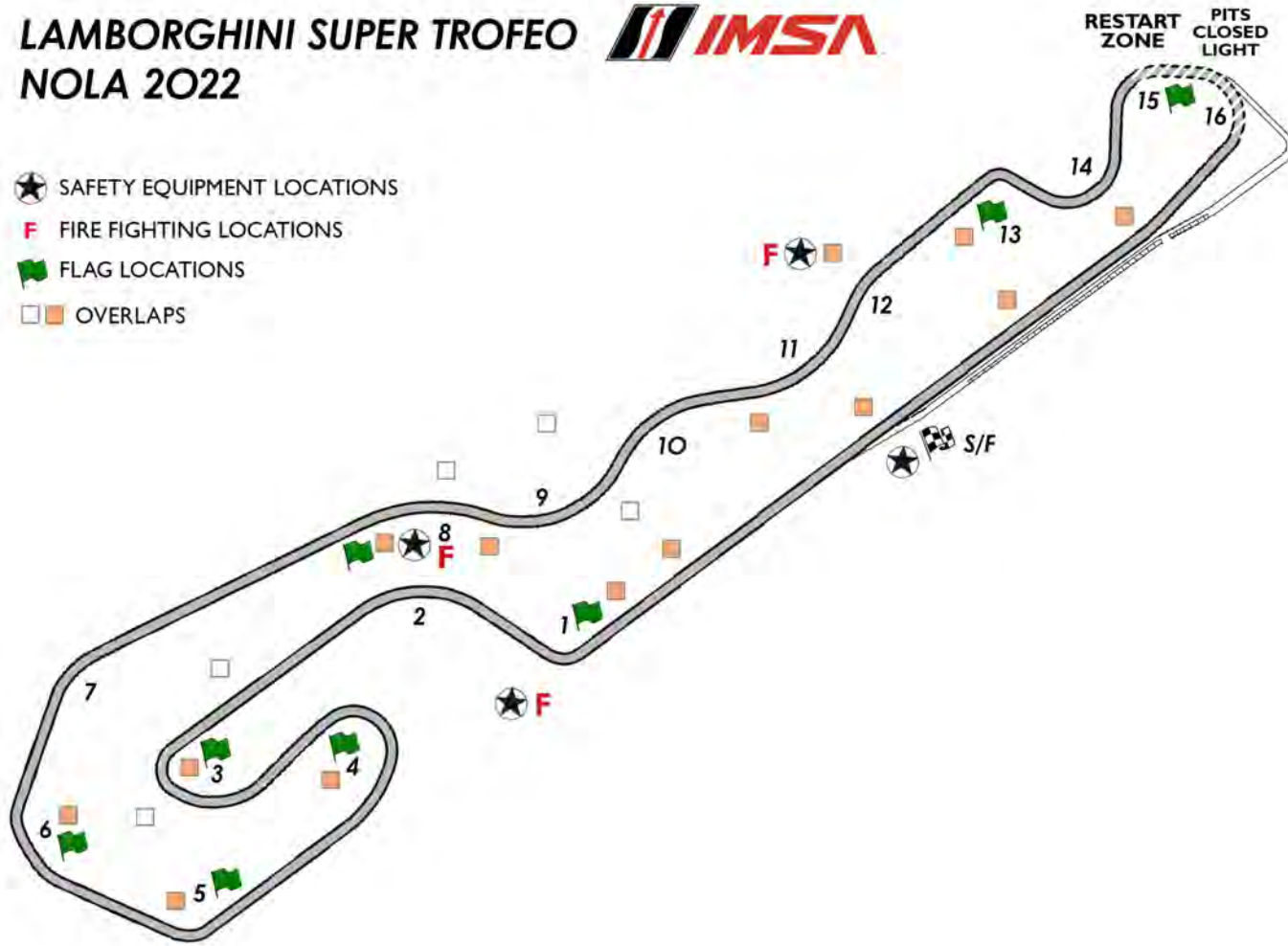
- Second floor of the building behind IMSA Tech Truck



OFFICIAL TRACK MAP

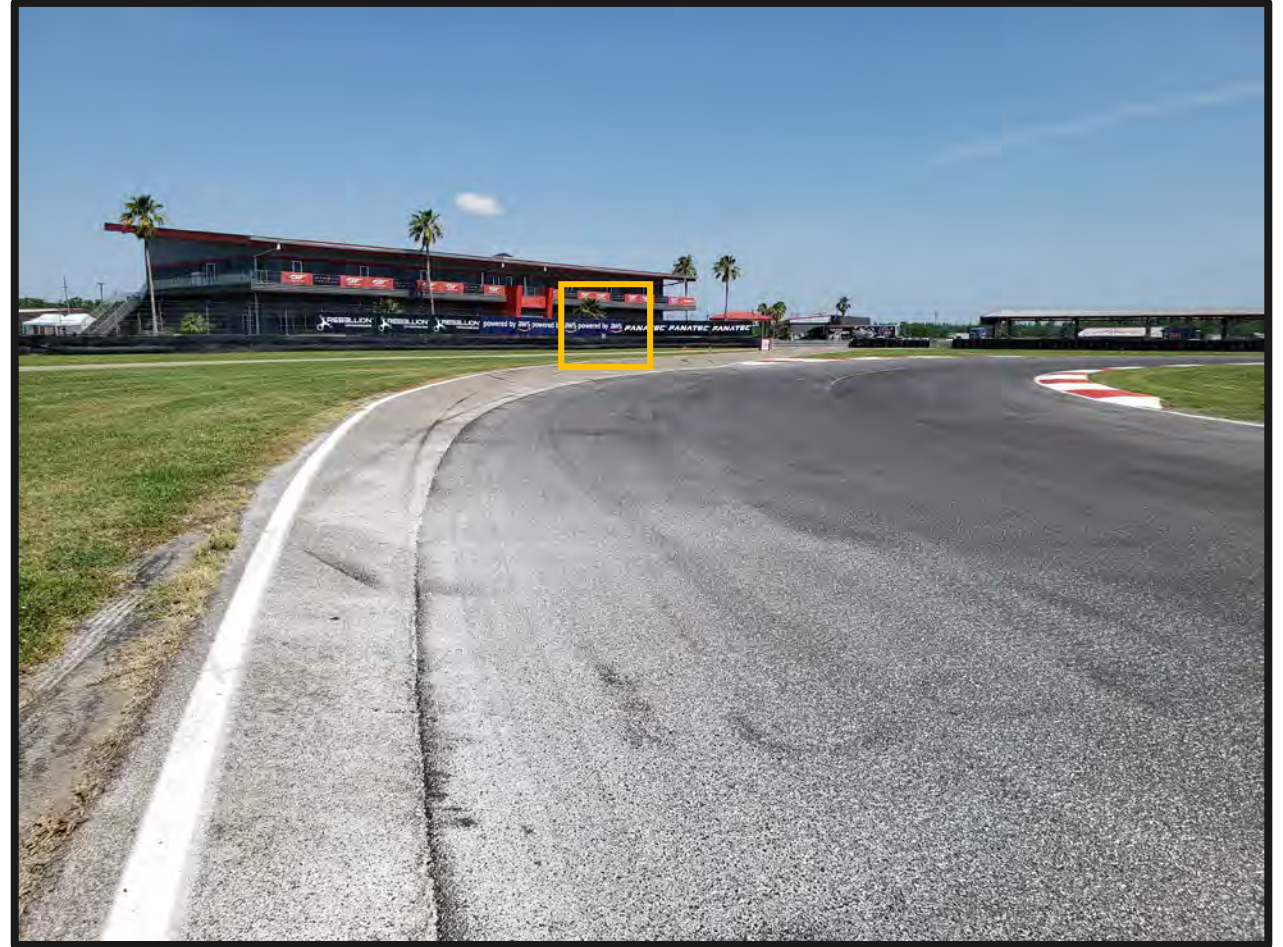
LAMBORGHINI SUPER TROFEO NOLA 2022

-  SAFETY EQUIPMENT LOCATIONS
-  FIRE FIGHTING LOCATIONS
-  FLAG LOCATIONS
-  OVERLAPS



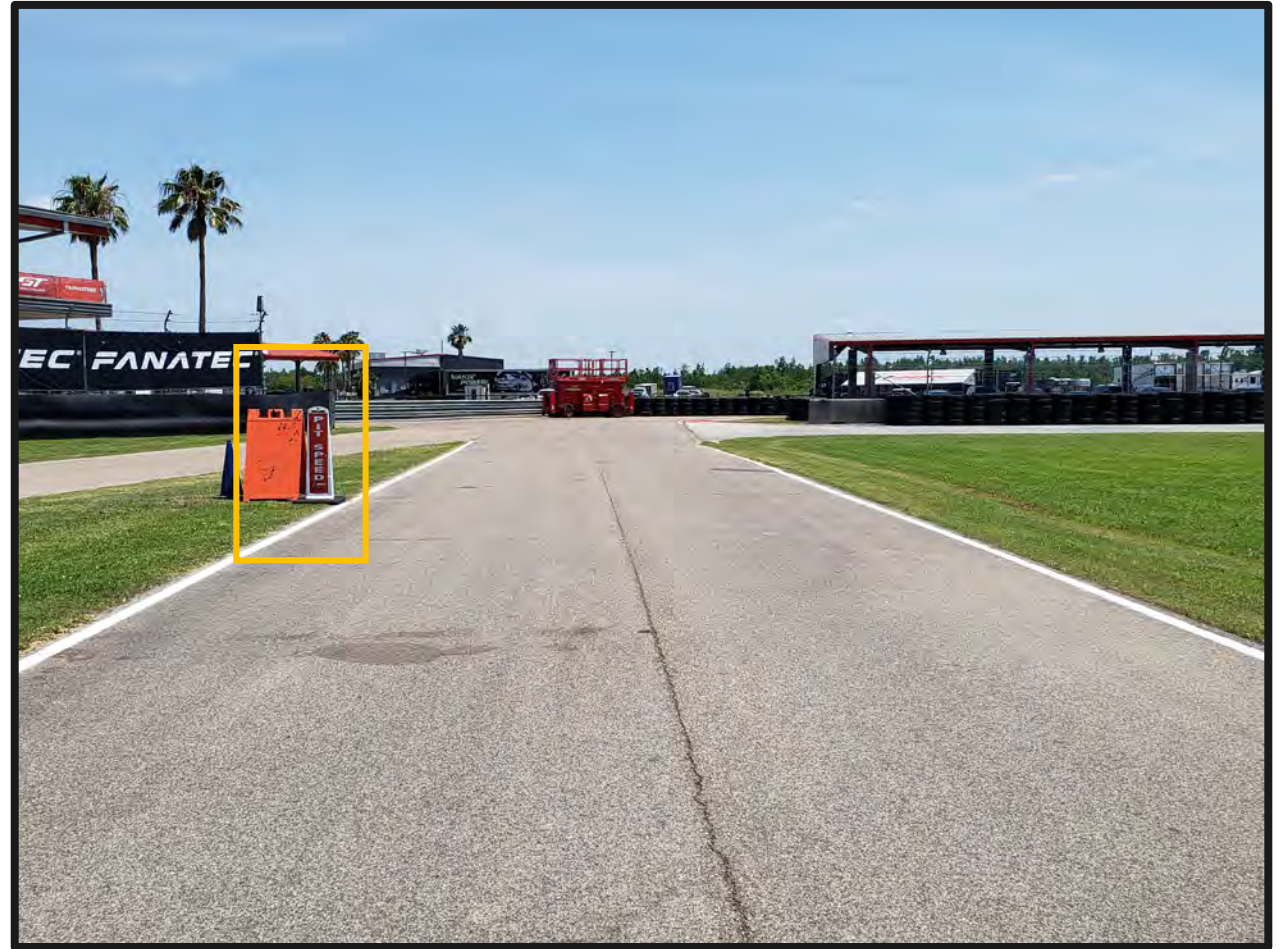
PIT COMMIT

- Must have part of car touching, or be to the left of the seam that divides the racetrack from pit entry prior to the pit closed light illuminating in order to be considered committed to the pits.



PIT LANE SPEED START

- Pit lane speed limit begins at red pylon

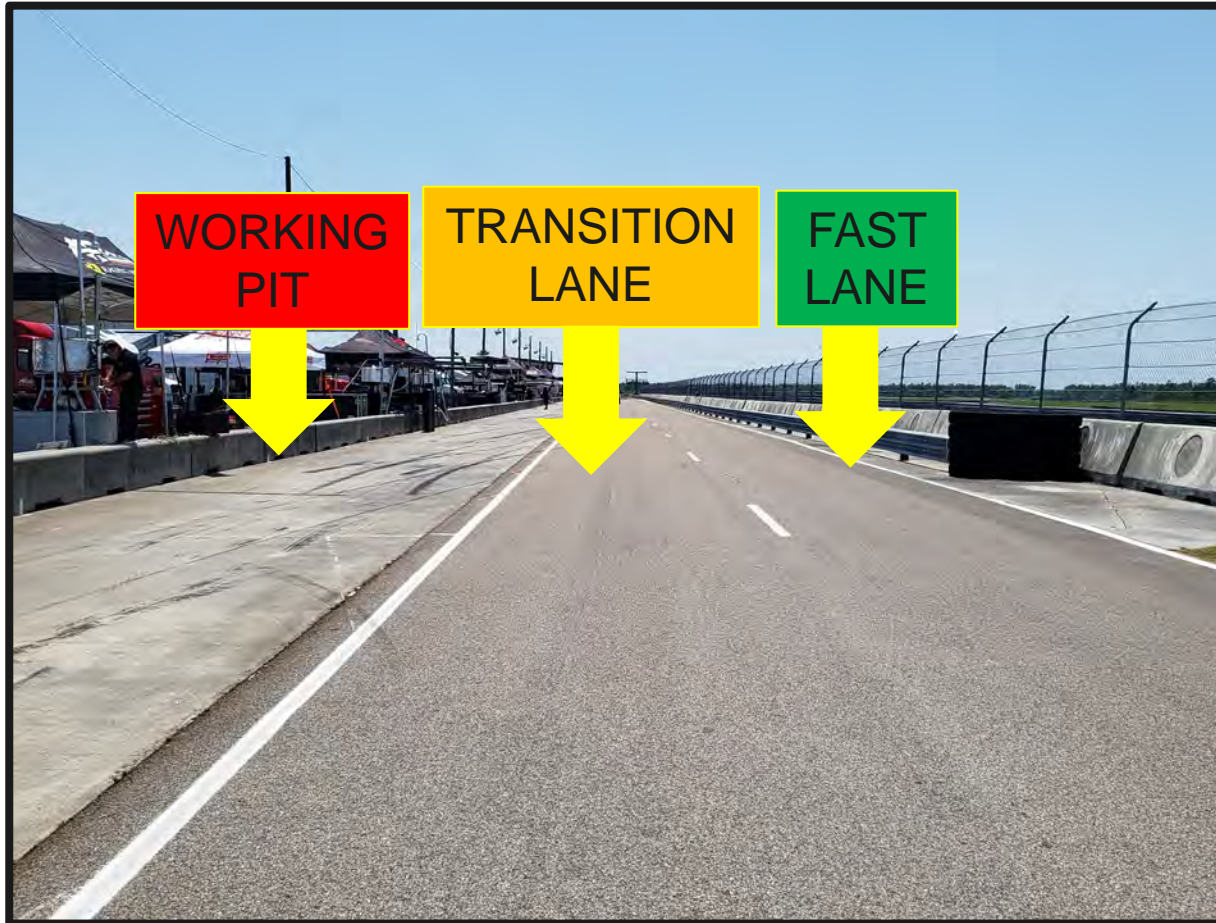


PIT CLOSED REPEATER LIGHT

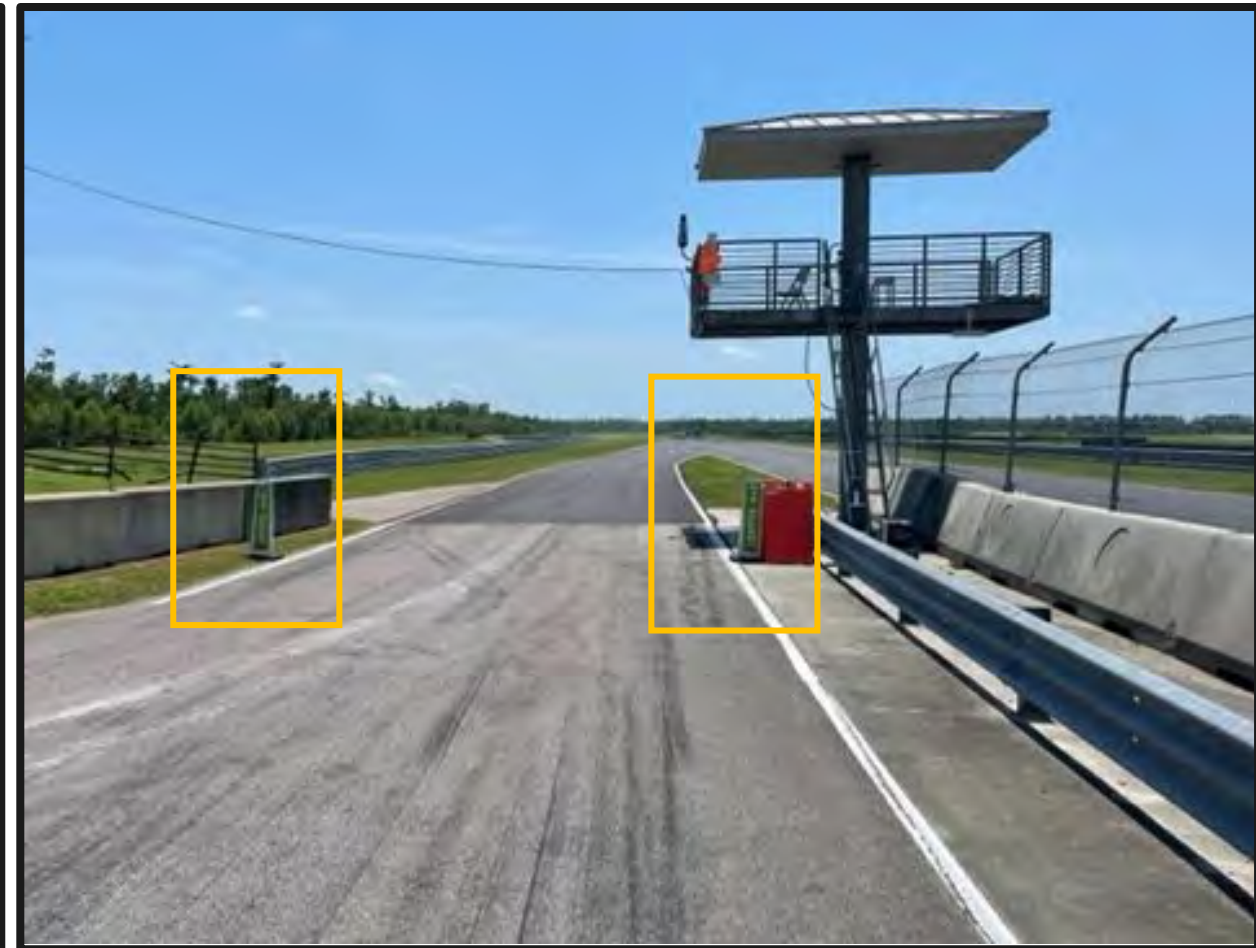
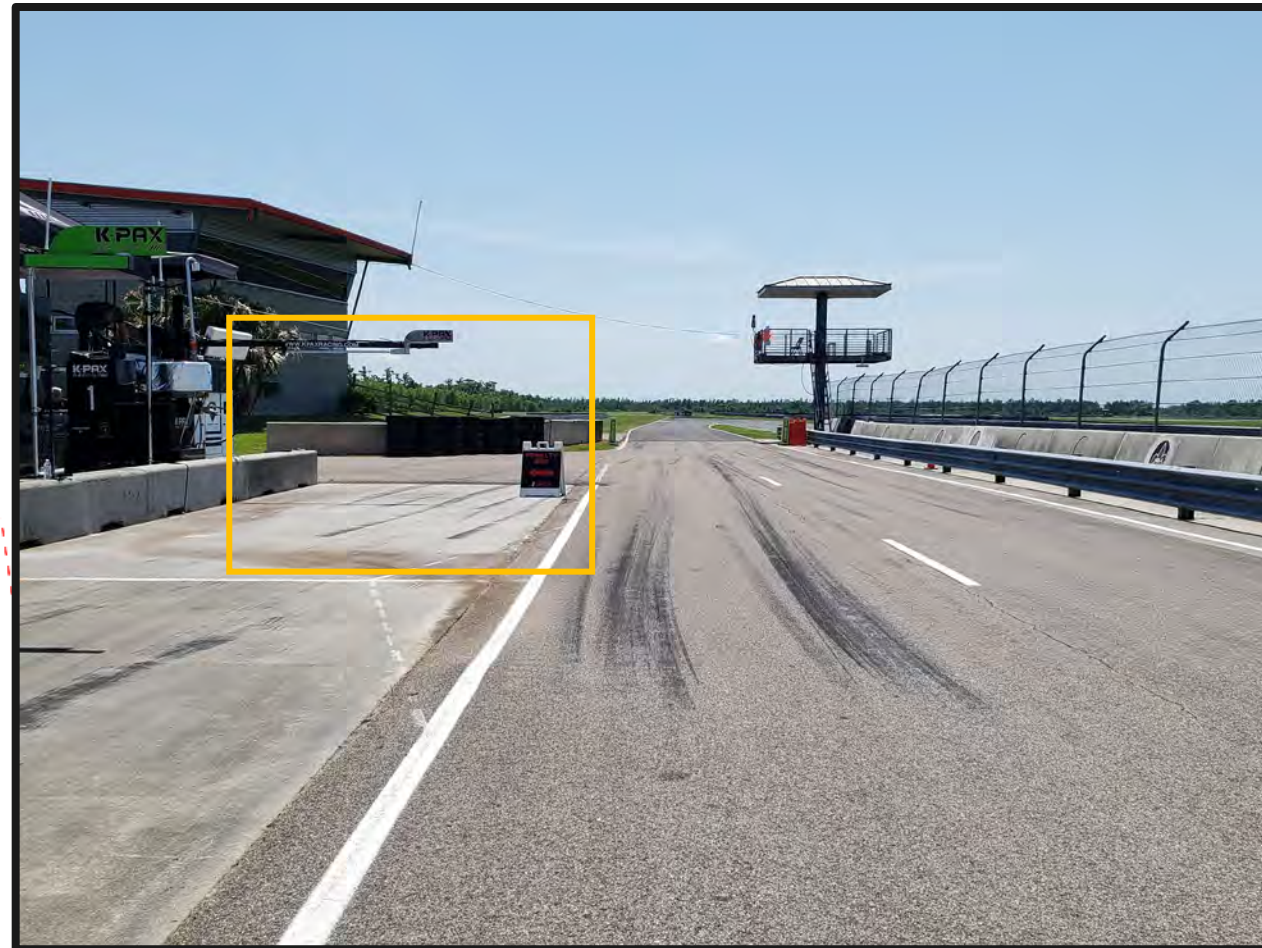
- Positioned on pit wall for team managers



PIT LANE PROTOCOL



PENALTY BOX / PLSL END



PIT EXIT MERGE

- Cars exiting the pit lane must remain left
- Merge safely with faster cars on track



ORANGE OVERLAPS



QUALIFYING

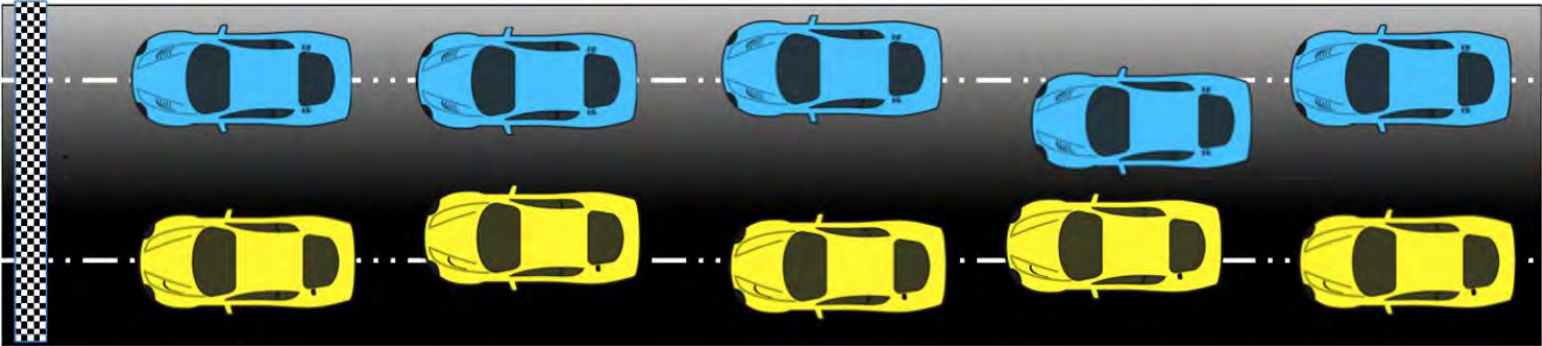
- Cars **MUST NOT LINE UP AT THE PIT EXIT** and must only go to their pit box at the start of the segment, or for any segment stoppage, until the green flag is again displayed, or the segment is concluded.
 - Penalty for lining up at pit exit: Drive Through.
 - Cars penalized on track for lining up or leaving their pit box early must serve the penalty prior to registering any lap times for the purposes of qualifying position.
- Short sessions, watch mirrors frequently on your in and out laps to not impede the qualifying of another competitor.
- Post qualifying: Drivers must drive their car to impound or to the paddock as directed.

RACE START

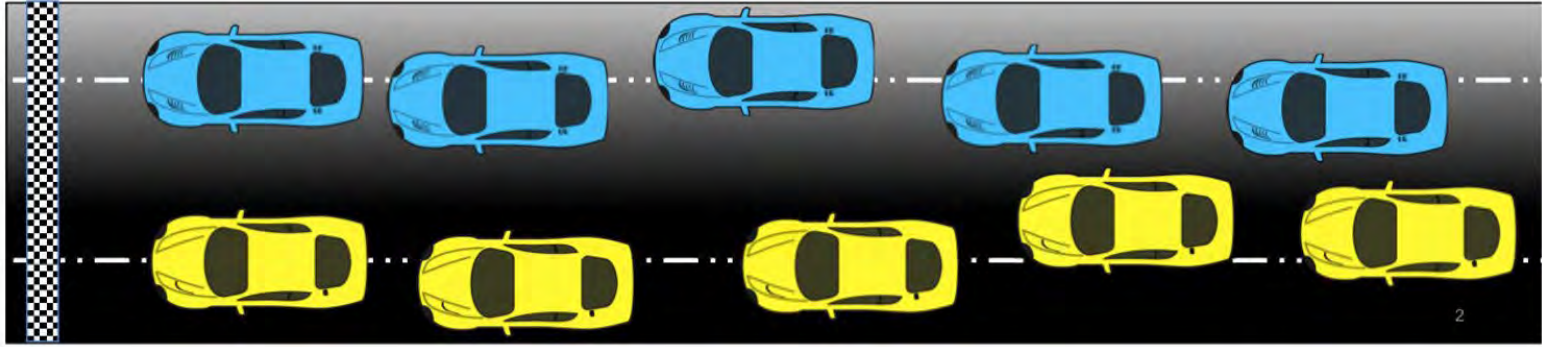
- One (1) formation lap
- Pack up from T6 to T8, pair up T8 to T12
- Stay with safety car
- Safety car enters pits
- NO ACCELERATION POINT - steady speed until green flag displayed
- Must maintain column positions and lanes until crossing the start line
- No changing of column until past s/f line
- Jump/false start reviews
 - Gaps
 - Timed/early acceleration
 - Out of line
 - Column passing
- Official race start is first time by

PROPER START

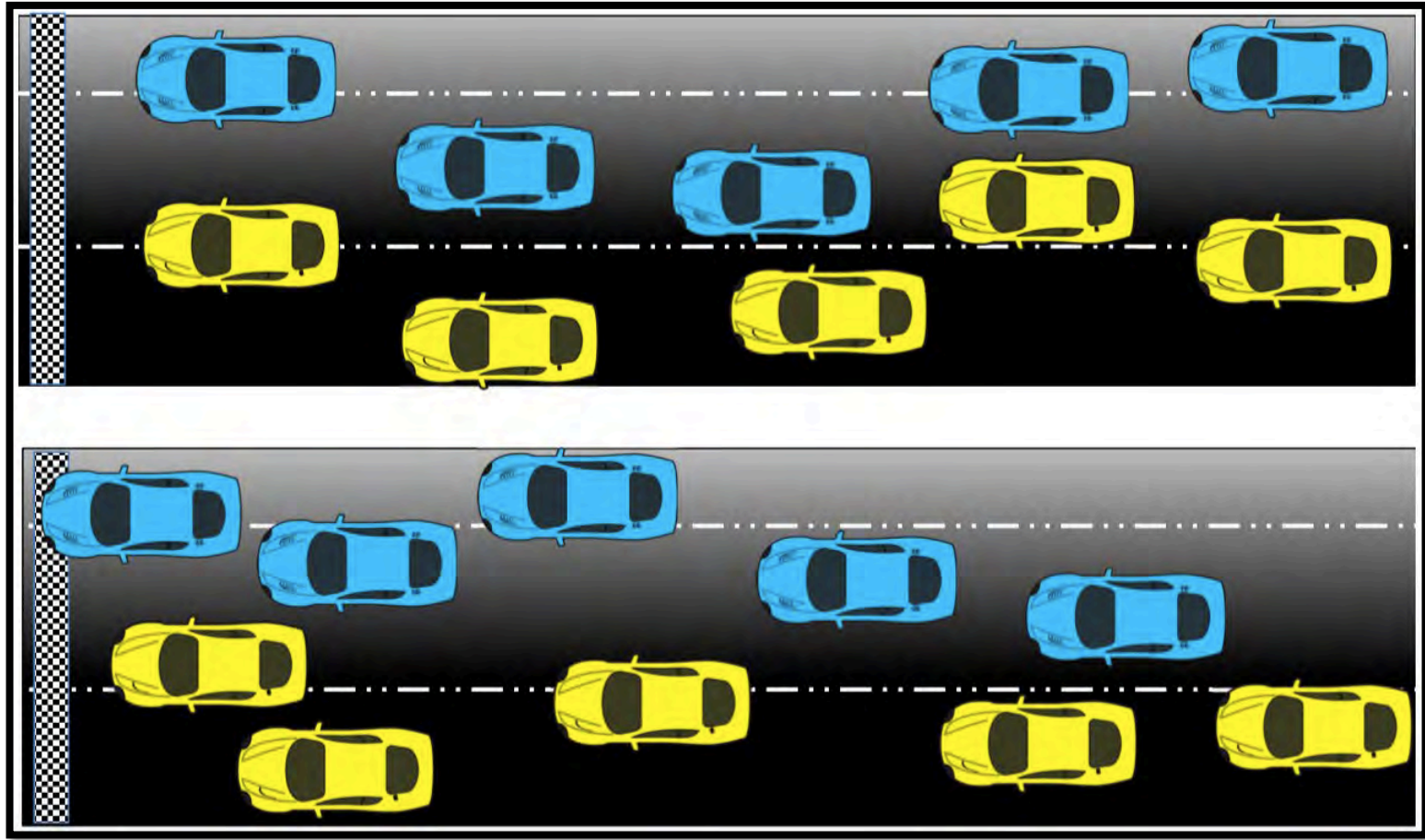
Good Overlaps:



Sloppy:



IMPROPER START- TO BE REVIEWED



ON-TRACK CONDUCT

Local yellow flags (SEE ARTICLE 27)

- No passing from point perpendicular to yellow flag to the point perpendicular to the following green flag

Blocking (SEE ARTICLE 30)

- Movement in reaction to the trailing car
- Defending increases responsibility

Contact/incident responsibility (SEE ARTICLE 30)

- Reviewed with Driver Advisor in RC
- Incidents under review announced by Race Control

Communicate review requests to pit officials

- Must provide time of day, location, and description of action to be reviewed

PIT STOP INFO

Minimum time pit in loop to pit out loop

- Two drivers = 93 Seconds
- Solo driver = 96 Seconds

Pit distance: 21,087 inches

Driver must change Driver ID plug before leaving pit exit or it will not register. Expect a drive through to rectify late Driver ID plug changes.

Driving slower than 60kph in the fast lane may be penalized. Transition lane should be used if less than 60kph to not interfere with Cars in the fast lane.

FULL COURSE YELLOW

Race control radio, in-car lights and double yellow flags displayed

- No trackside lights

Track Services may begin to move as soon as FCY is announced

- Safety Car dispatches from pit exit
- RC instructions regarding track condition over radio

Lights out by turn 12

- Maintain SC speed, let SC get away, *no more tire scrubbing*

Restart Acceleration zone – Turn 15-16

- Passing may begin at the display of green flag

RESTART ACCELERATION ZONE

Restart acceleration zone: Turn 15-16



LIVE STREAMING



RACE 1 | SATURDAY | MAY 21 | 4:25 PM CST

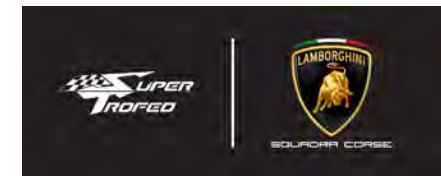
RACE 2 | SUNDAY | MAY 22 | 9:40 AM CST



OR



OR



[Lamborghini Squadra Corse YouTube](#)



THANK YOU