

PORSCHE

CARRERA CUP
NORTH AMERICA

TITLE PARTNER

VISIT
CAYMAN ISLANDS 



WELCOME

SERIES CONTACTS

Randy Buck	Race Director	(415) 298-7018
Duane Sampson	Director, Single Make Platforms	(386) 310-5926
Paul Walter	Sporting Regulations	(614) 598-6783
Jeff Mishtawy	Senior Technical Manager	(386) 310-6654
Gayle Burnham	Administration	(386) 235-7800
Mike Richter	At-Track Admin	(386) 453-7788
Troy Bundy	Porsche Motorsport North America	(470) 494-1780
Jeremy Sundt	Porsche Motorsport North America	(470) 419-9489
Cory Posocco	Paddock Logistics	(386) 566-8313
Roy Spielmann	Track Services	(414) 702-0905
Johnny Knotts	Pit Lane Supervisor	(813) 763-4669
David Pees	Timing & Scoring	(386) 308-8866
Ryan McLean	Medical Liaison	(386) 285-6913

EVENT PROTOCOLS REMINDER

REVIEW DOCUMENT

- Found on the IMSA Competitors landing page
 - <https://www.imsa.com/competitors/>

IMPORTANT UPDATES

- Mask wear will not be required at Michelin Raceway Road Atlanta
- Participants are encouraged to review/apply Event Operations Protocols



EVENT INFORMATION

Useful resources

IMSA Competitor Landing Page:

<https://www.imsa.com/competitors/>

- Team Portal
- SR
- Safety Inspection Schedule
- Marketing & Branding Page

IMSA Notice Board: <http://results.imsa.com/>



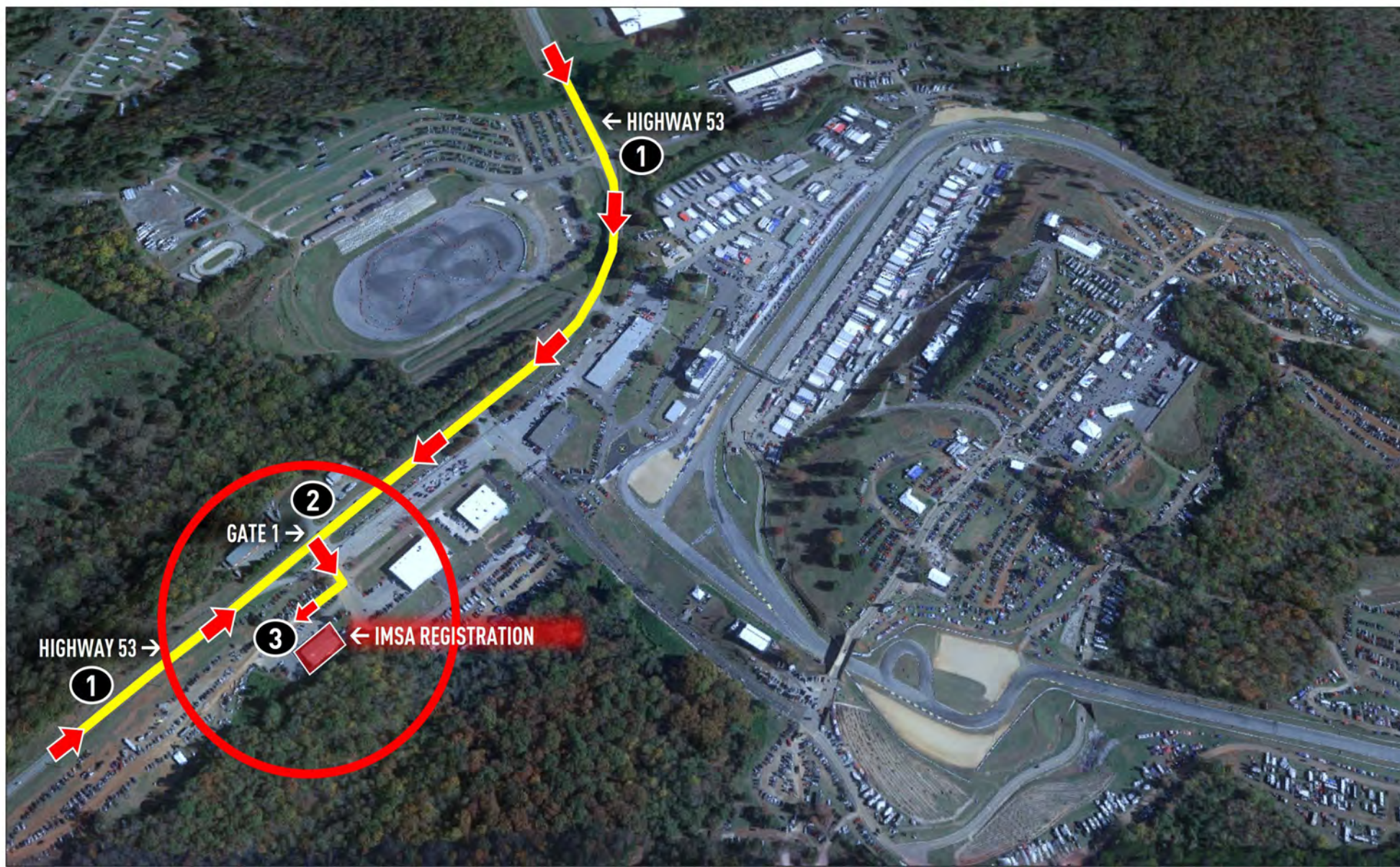
The screenshot shows the IMSA Timing Results website. The header features the IMSA logo and the text "TIMING RESULTS". On the right side of the header, there are links for "NOTICEBOARD" and "LIVE TIMING". Below the header, there are dropdown menus for "SEASON" (set to 2022) and "EVENT" (set to Daytona International Speedway). The main content area is titled "DAYTONA INTERNATIONAL SPEEDWAY, SEASON 2022" and displays a list of links for various championship points, including "IMSA WEATHERTECH SPORTSCAR CHAMPIONSHIP" and "IMEC CHAMPIONSHIP POINTS".

Directions

1. Highway 53 to Michelin Raceway Road Atlanta
2. Enter Gate 1 off Highway 53
3. Take immediate right to IMSA Registration parking

IMSA Registration Hours

- Tue., 9/27
12:00 PM - 5:00 PM
- Wed., 9/28
6:00 AM - 5:00 PM
- Thu., 9/29
7:00 AM - 8:00 PM
- Fri., 9/30
7:00 AM - 4:00 PM
- Sat., 10/1
7:00 AM - 3:00 PM



TO RACE TEAM PARKING – TOWER Paddock

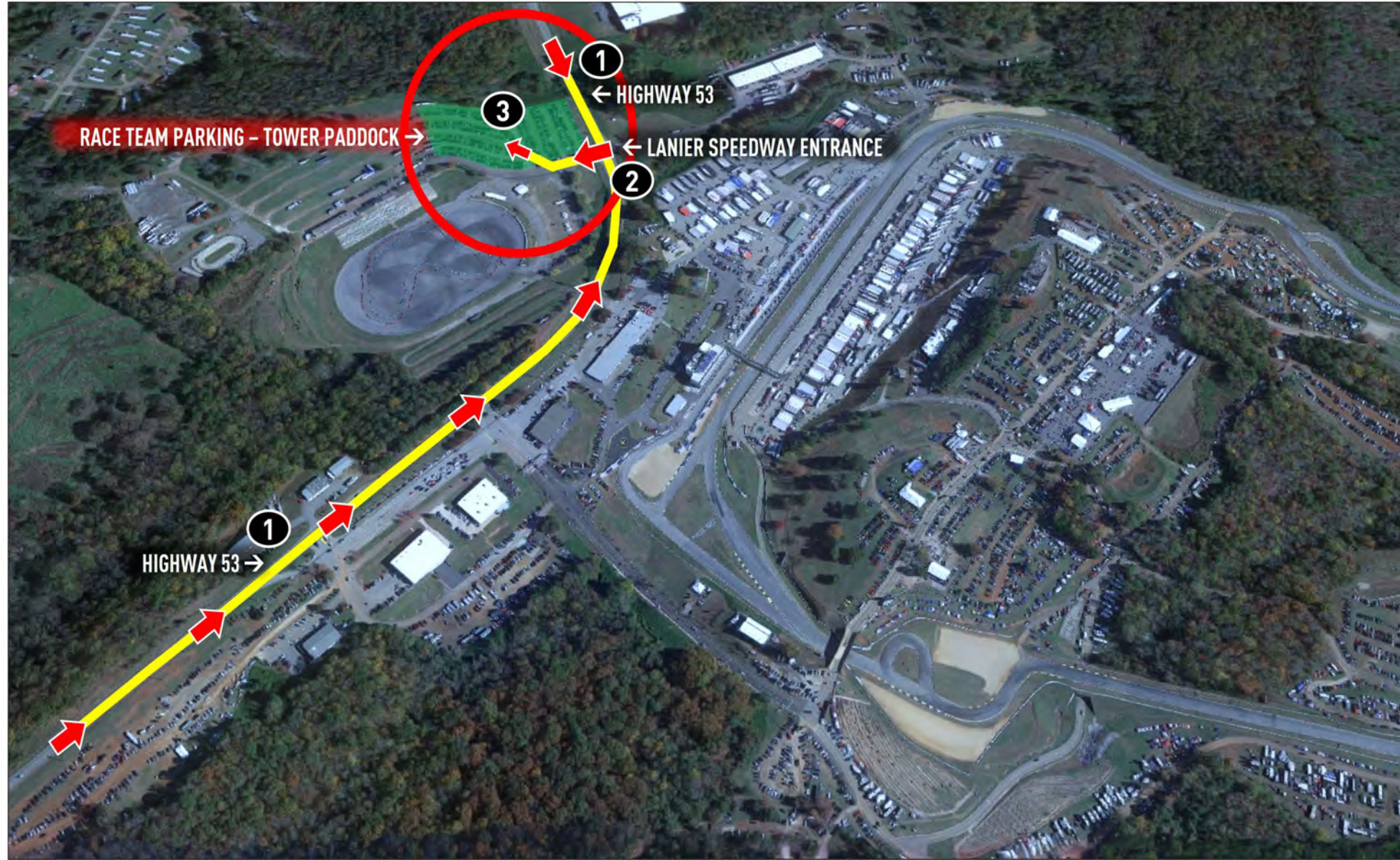


Directions

1. Highway 53 to Michelin Raceway Road Atlanta
2. Enter Lanier Speedway off Highway 53
3. Proceed to designated race team infield parking areas

Notes

- IMSA annual parking pass is required (red hang tag)



2023 DRIVER COMBINE

The Driver Combine is a one-stop shop for drivers to complete any or ALL 2023 Driver Membership/Annual Credential requirements

- Complete & submit the Driver Application
- Take an ImPACT Test (if yours has expired)
- Complete an annual physical
 - The annual physical is \$100 and must be paid in CASH at the time of the exam
- \$950 Payment for the 2023 Driver Application is not required to participate in Driver Combine (Credentials will not be printed at the Driver Combine if payment is not submitted)

Visit the Driver Portal at [IMSA.com/COMPETITORS](https://www.imsa.com/COMPETITORS) to schedule an appointment – **Opening September 13th**
Walk-ins are welcome, appointments are given priority

FOR ANY QUESTIONS, PLEASE EMAIL ASHLEE RICE: ARICE@IMSA.COM

September 28-30, 2022

Wednesday, 8:00AM - 5:00PM

Thursday, 8:00AM - 5:00PM

Friday, 8:00AM - 3:00PM

LOCATION

Michelin Raceway Road Atlanta

Administration Classroom

Notes

- Located inside the track Administration Classroom Building, adjacent to Gate 2 off Highway 53, at Michelin Raceway Road Atlanta



» TO IMSA DRIVER / TEAM BRIEFINGS

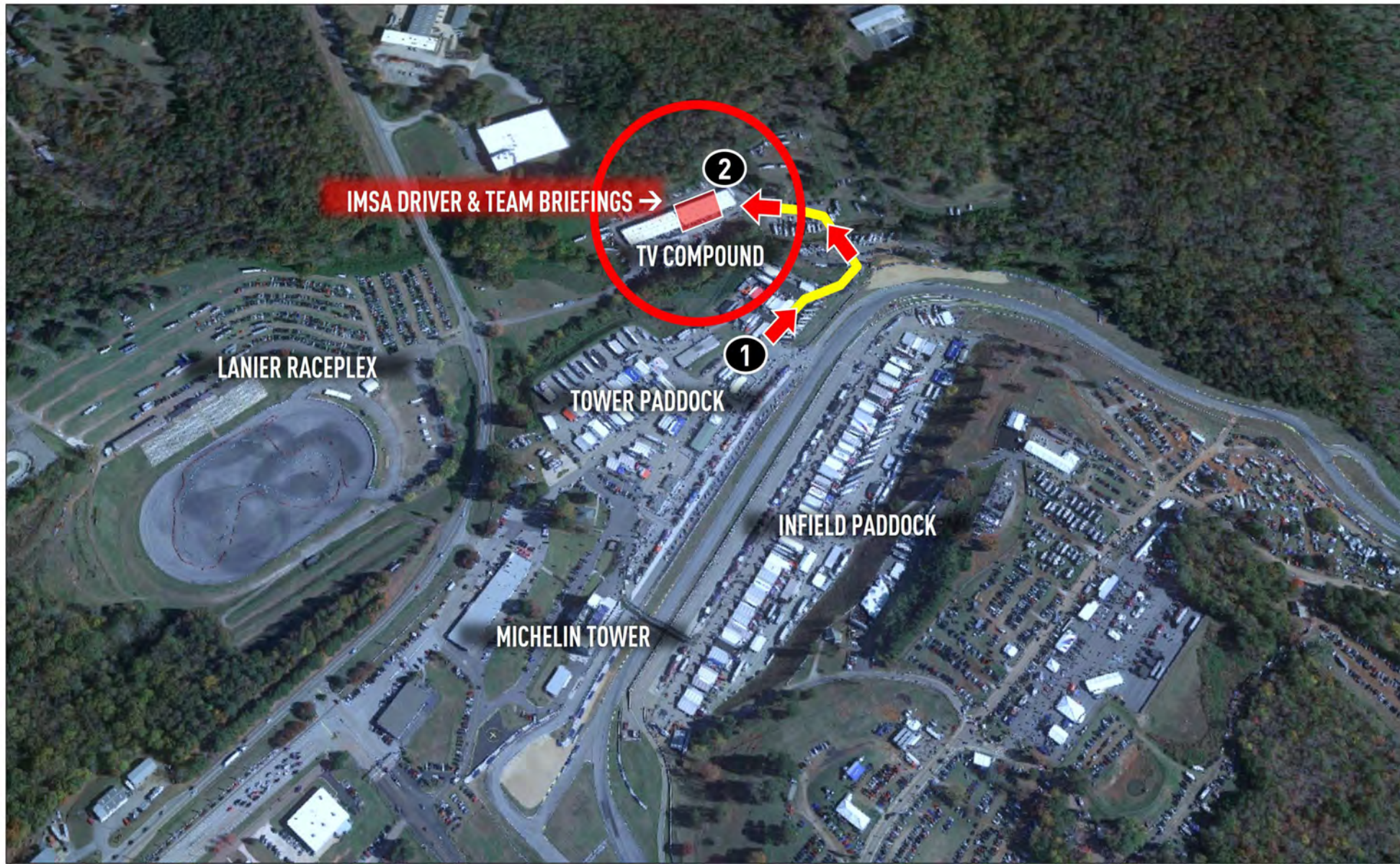


Directions

1. Proceed through Tower Paddock area towards TV Compound / IMSA Logistics facility
2. Enter IMSA Logistics facility at designated doors

Notes

- Passenger vehicles are prohibited
- Properly permitted pit vehicles and golf carts are allowed



» Paddock Locations



Paddock Locations

- Infield Paddock
 - IMSA Prototype Challenge
 - IMSA WeatherTech Sports Car Championship
- Tower Paddock
 - IMSA Michelin Pilot Challenge
 - Porsche Carrera Cup North America
 - Mazda MX-5 Cup



TO PIT LANE FROM TOWER Paddock



Directions

1. Stage at False Grid
2. Enter Pit Lane
3. Proceed down Pit Lane and enter racecourse

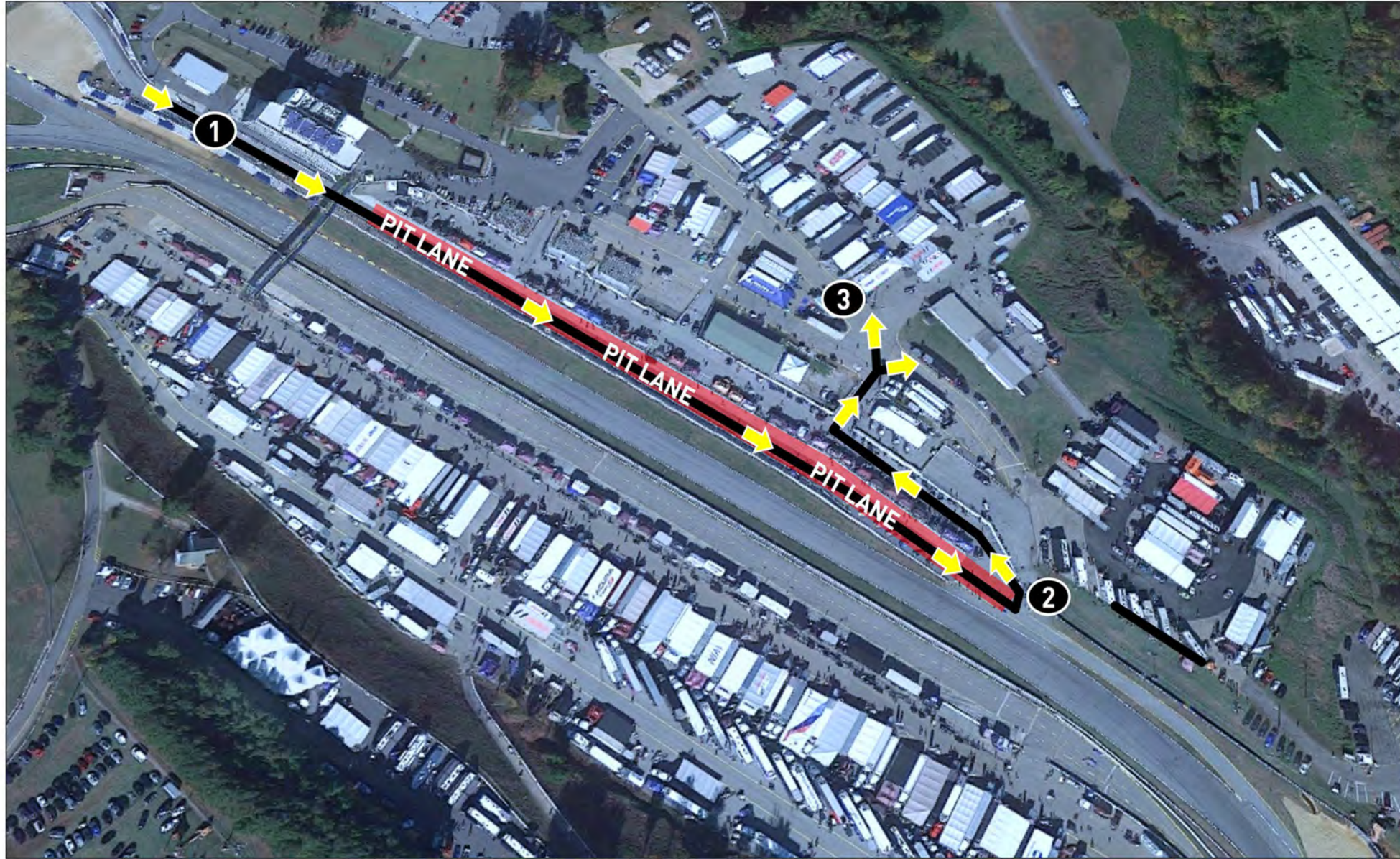


TO TOWER Paddock FROM PIT LANE



Directions

1. Enter Pit Lane
2. Exit Pit Lane behind pit wall, driver's left, near pit out
3. Proceed to designated paddock area



MERG

During Event uses

- Engine Change
- Discontinue participation in Event before Race

After Qualifying

- Request to change one (1) tire
- Notification of more than one (1) tire change

During Race

- Retire from Race

PIT/GARAGE VEHICLES (SSR 20.3.4)

- Permitted types

- Golf Carts
- Tuggers
- ATVs



- Prohibited types

- Scooters
- EV Cycles/Scooters
- Motorcycles
- Bicycles
- Skateboards
- Rollerblades
- Drones
- Other non-motorized transportation



IMSA TRACK SERVICES

IMSA CHASE VEHICLES

- Chase 1
- Chase 2
- Chase 3
- Chase 4



ON TRACK ASSISTANCE

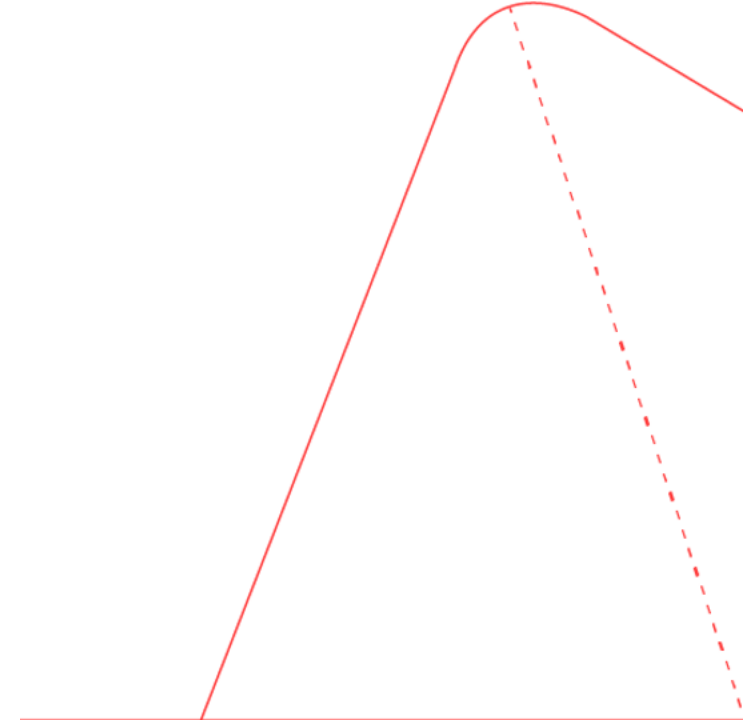
- Communication with Track Services Medic
- Neutral and power shut off
- Follow direction on scene Track Services



MOTUL PETIT LE MANS MICHELIN RACEWAY ROAD ATLANTA 2022



- L** IMSA DELPHI LIGHT LOCATIONS
- ★** SAFETY EQUIPMENT LOCATIONS
- F** FIRE FIGHTING LOCATIONS
- 🚩** FLAG LOCATIONS
- ORANGE OVERLAPS



PIT LANE ENTRANCE

- PIT LANE ENTRY DRIVER'S LEFT
AFTER TURN 11 BRIDGE

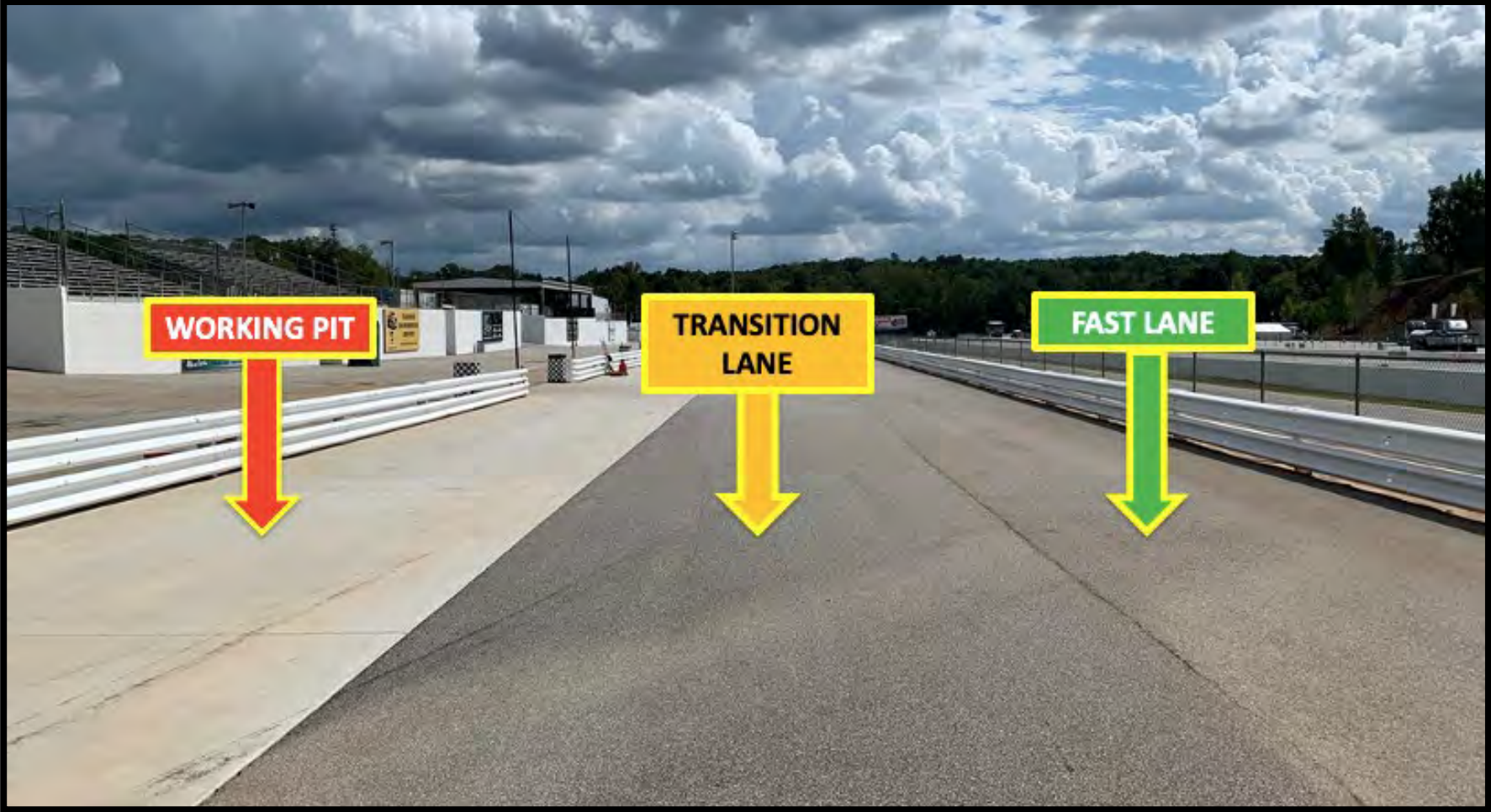


PIT LANE SPEED LIMIT

- PIT LANE SPEED LIMIT BEGINS AT RED PYLONS



PIT LANE PROTOCOL



PIT EXIT



PIT EXIT MERGE

- CARS EXITING THE PIT LANE MUST REMAIN TWO WHEELS TO THE LEFT OF THE MERGE LINE UNTIL IT ENDS
- MERGE SAFELY INTO TURN 1
- RESPECT THE SPEED DIFFERENCE OF THOSE ALREADY ON TRACK



SPEED DIFFERENTIAL BETWEEN CLASSES



ORANGE OVERLAPS



ORANGE OVERLAPS



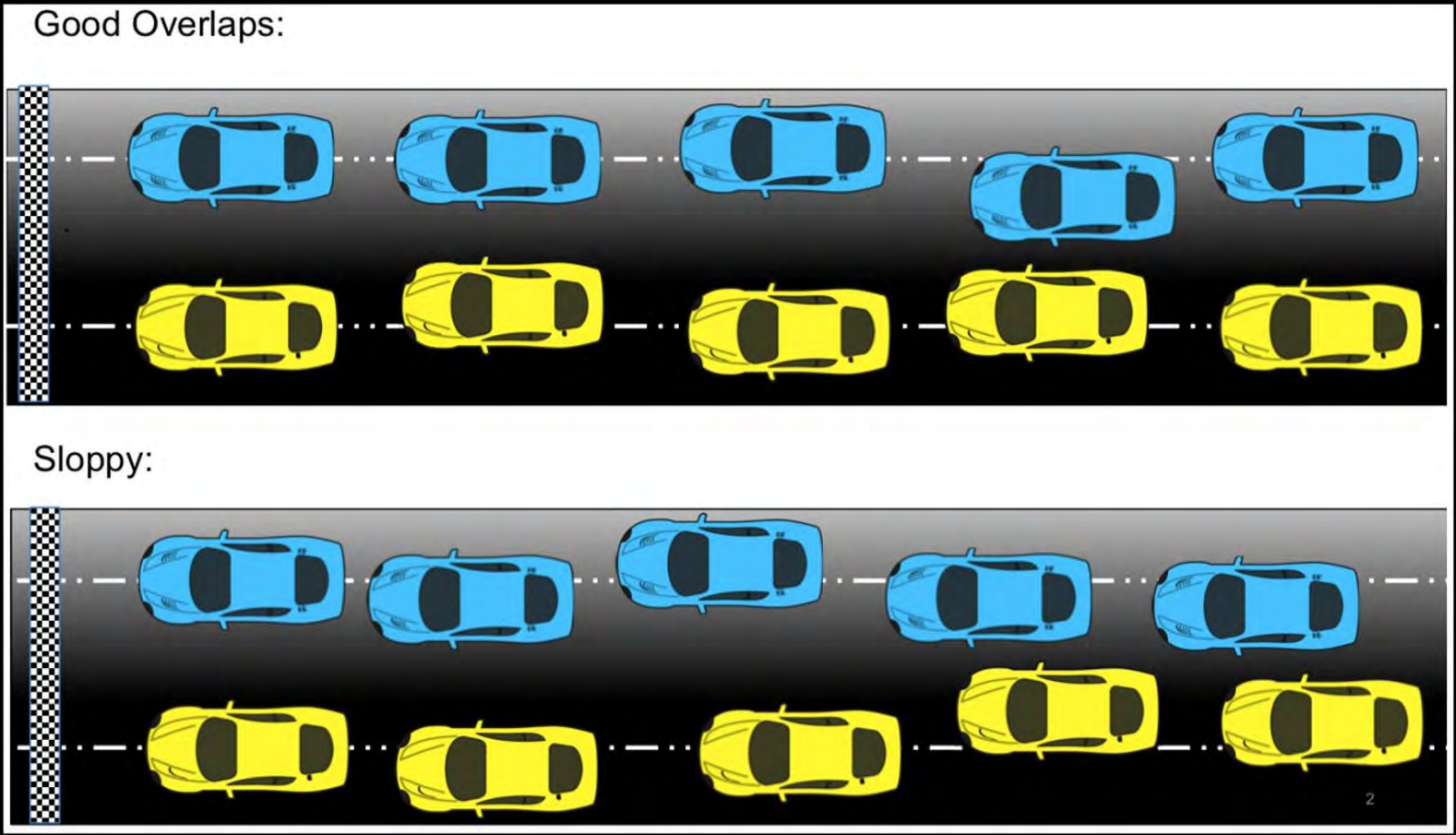
PRE-RACE / FORMATION LAP

- Refer to official schedule and minute-by-minute for final times and instructions
- Move to grid on pit lane, echelon formation driver's **RIGHT**
- **ONE (1) FORMATION LAP**
- **PAIR UP AFTER TURN 9 FLAG STATION - *(NO MORE TIRE SCRUBBING)***

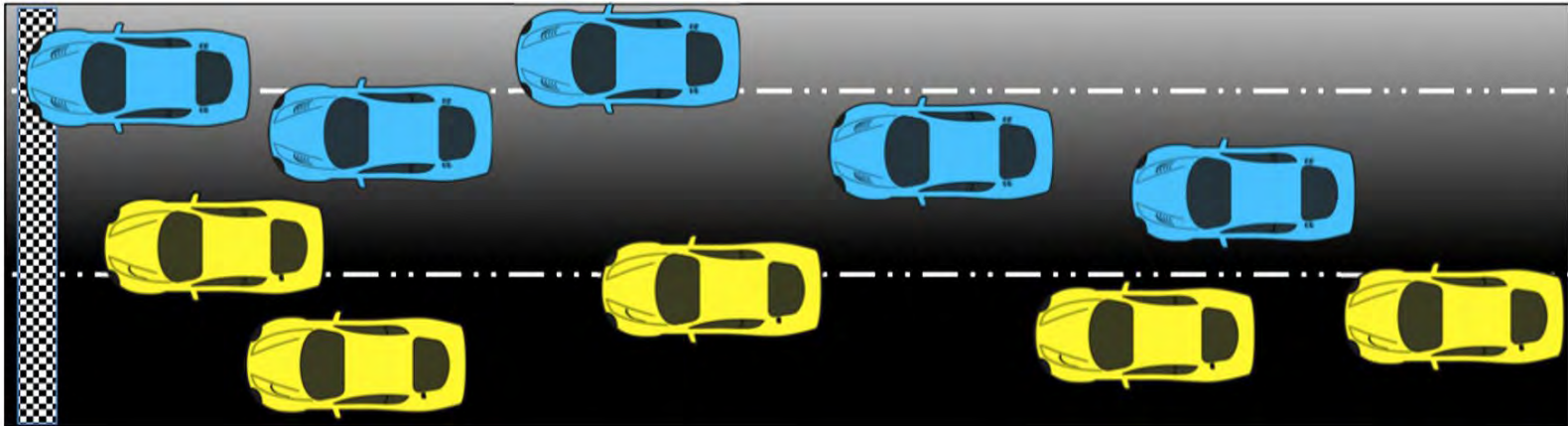
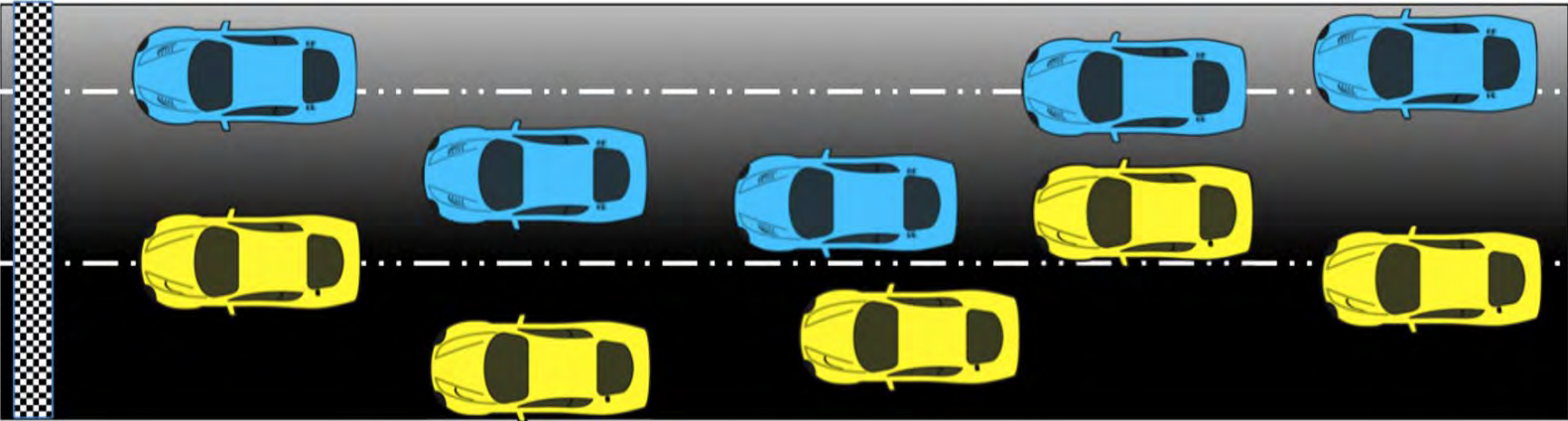
RACE START

- ONE (1) FORMATION LAP
- PACK UP AFTER T7
- PAIR UP AFTER T9 FLAG STATION (NO MORE TIRE SCRUBBING)
- STAY WITH SAFETY CAR
- SAFETY CAR ENTERS PITS
- ACCELERATION POINT (POLESITTER)
- JUMP/FALSE START REVIEWS
 - Gaps
 - Timed/early acceleration
 - Out of line
 - Column passing
 - It is NOT permitted to move from one column to the other prior to Start line
- OFFICIAL RACE START IS FIRST TIME BY

PROPER START



IMPROPER START – TO BE REVIEWED



FULL COURSE YELLOW

- Failure to maintain proper Safety Car speed and correct gaps between Cars, or otherwise initiate manipulative action to gap Cars, is prohibited and subject to penalty.
- Race Control radio, in-car lights, trackside lights, double yellow flags displayed
- Response vehicles may begin to move as soon as FCY is announced
- Leader to Safety Car speed, all Cars pack up – respect the area of incident/Track Services personnel
 - RC instructions regarding track condition over radio
 - SC dispatch from Pit Exit

RESTART

- Maintain SC speed, let SC get away, *no more tire scrubbing after Turn 9 Flag Station*

RESTART ACCELERATION ZONE – EXIT OF TURN 10

- Passing on display of green flag

RESTART ACCELERATION ZONE

RESTART ACCELERATION ZONE IS
EXIT OF TURN 10

SINGLE FILE RESTART

PASSING IS PERMITTED WHEN THE
GREEN FLAG IS DISPLAYED



ON-TRACK CONDUCT

- **LOCAL YELLOW FLAGS (SEE ARTICLE 27)**
 - No passing from point perpendicular to yellow flag to the point perpendicular to the following green flag
- **BLOCKING (SEE ARTICLE 30)**
 - Movement in reaction to the trailing Car
 - Defending increases responsibility
- **CONTACT/INCIDENT RESPONSIBILITY (SEE ARTICLE 30)**
 - Review with Driver Advisor in RC
 - Incidents under review announced by Race Control
- **COEXISTENCE**
 - Maintaining awareness lessens margin for error, regardless of responsibility
- **COMMUNICATE REVIEW REQUESTS TO PIT OFFICIALS**
 - Must provide time of day, location, and description of action to be reviewed

ON-TRACK REVIEW / EXPECTATIONS

ROAD ATLANTA TRACK SPECIFICS

- **Esses – Respect speed differentials when lapping/being lapped**
- **Turn 7 Braking – late pass attempts**
- **Turn 10 Braking – late pass attempts**



RACING OPTICS®

Looking for windshield tear-offs?

Racing Optics, a Proud Partner of IMSA, is the industry leader in multilayer, laminated tear-offs, and is proud to offer their product and installation services to IMSA teams and competitors.

To schedule an install or for more information, please contact:

Chris Colton

Racing Optics Applications Engineer

C.Colton@racingoptics.com

980-439-6485





MOBILE RACING LAB

- The Motul Racing Lab is a state-of-the-art mobile laboratory capable of analyzing the lubricants running in your engine
- The Motul Racing Lab can:
 - *Search for metal elements present in the lubricant to detect premature or accelerated engine wear, and thus know if it is necessary to carry out replacement of a part(s)*
 - *Analyze the composition of the lubricant in use to highlight any coolant leaks or fuel dilution that may damage the engine and limit its performance.*
- This free service is offered throughout the Motul Petit Le Mans race weekend to all competitors, regardless of what brand of lubricants they are using
- The Motul Racing Lab will be stationed in the Fan Zone, but Motul Technical reps will have paddock access to collect samples from teams
- The service takes about 15-20 minutes and will be limited to about 20 tests per day
- Please contact a Motul representative if you are interested in participating

Joey Cabrera

National Technical Director

j.Cabrera@us.motul.com

(909) 524-2406

Nicolas Demaria

Technical Product Manager

N.Demaria@br.motul.com

(657) 465-8322

PORSCHE

**CARRERA CUP
NORTH AMERICA**

TITLE PARTNER

VISIT
**CAYMAN
ISLANDS** 



THANK YOU