

WHELEN MAZDA MX-5 CUP

TEAM MANAGER MEETING



SERIES CONTACTS



Keith Dalton	Series Manager	(863) 381-1942
Marcus Haselgrove	Technical Director	(954) 224-3408
Doug Morrissey	Pit Lane Supervisor	(262) 443-0305



Randy Buck	Race Director	(415) 298-7018
Duane Sampson	Director, Single Make	(386) 285-7021
Cory Posocco	Paddock Logistics	(386) 566-8313
Eric Haverson	Technical	(386) 562-7214
Gayle Burnham	Administration	(386) 235-7800
David Pees	Timing & Scoring	(386) 308-8866
Ryan McLean	Medical Liaison	(386) 285-6913
Roy Spielmann	Track Services	(414) 702-0905
Robert Bosworth	Safety & Security	(704) 728-8087

IMSA RESOURCES

IMSA COMPETITOR LANDING PAGE:

<https://www.imsa.com/competitors/>

- Team Portal
- Event Information
- Rules & Regulations
- Marketing & Branding Page

IMSA NOTICE BOARD:

<http://results.imsa.com/>

- Driver & TM Briefings
- Entry Lists
- Minute by Minute
- Timing Results
- Penalties

WELCOME TO THE 2023 IMSA COMPETITION LANDING PAGE

FOR ALL IMSA COMPETITOR INFORMATION PLEASE CLICK THE HAMBURGER MENU AT THE TOP LEFT OF THIS PAGE.

The one-stop shop for everything you'll need to get your team on track.

[2023 Team Portal](#)

[2023 Team Portal](#)

[2023 Season Test Event Information](#)

[Media Center](#)

[IMSA Marketing and Branding Resources](#)

[Race Results](#)

[Federal Challenge Pass Results](#)

[Special Michelin Fleet Pricing for Commercial/Light Truck Tires and Services - For All IMSA Members - 8 Tires Minimum Purchase](#)

[Special Michelin Discount Program for Passenger Tire - For All IMSA Members](#)

[IMSA Proud Sponsors](#)

LATEST EVENT INFORMATION



Mobil 1 Twelve Hours Of Sebring

Mar 15 to Mar 18

Sebring, FL

Resources:

[Provisional Schedule & SR 1/18/23](#)

IMSA NOTICEBOARD

SEASON: 2023 EVENT: Honda USA - Daytona International Speedway

MOLEX 24 - DAYTONA INTERNATIONAL SPEEDWAY, SEASON 2023

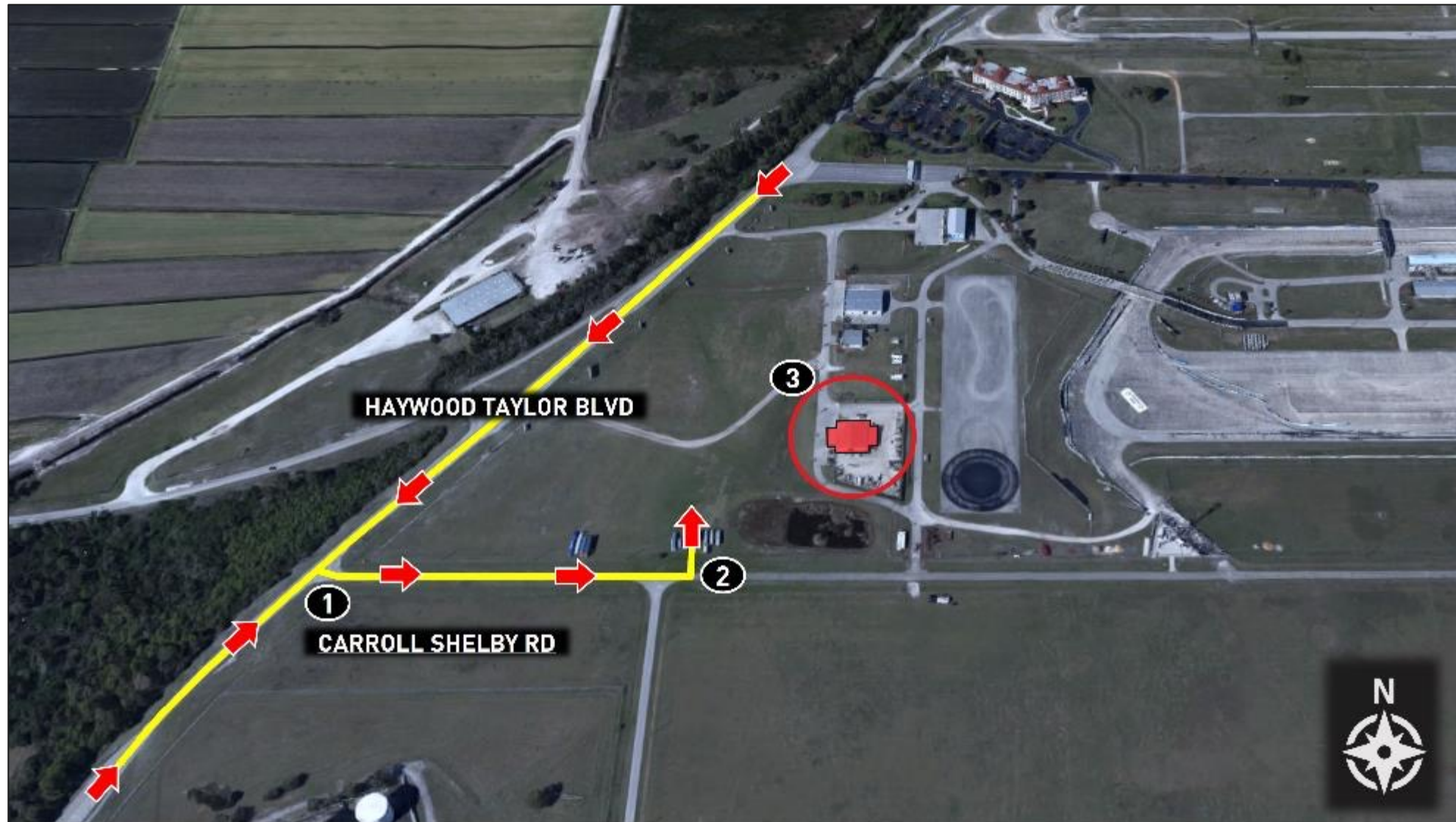
- OFFICIAL SCHEDULE - K2
- PACE ASSIGNMENTS
- TRACK & SECTOR MAP
- TRACK MAP - K2
- DRIVER BRIEFINGS
 - IMPC DRIVER BRIEFING
 - IMSC DRIVER BRIEFING
 - IMX-5 DRIVER BRIEFING
- CHANNEL LIST
 - MOLEX 24 CHANNEL LIST
- ENTRY LIST
 - IMPC P10 RACE ENTRY LIST - K2
 - IMSC P10 RACE ENTRY LIST
 - IMX-5 P10 RACE ENTRY LIST

Directions

1. Take Haywood Taylor Blvd to Carroll Shelby Rd
2. Take first left to access road leading to IMSA Registration parking area
3. Follow signage to IMSA Registration (red shaded area)

Notes

- Address: 150 Earwood Blvd, Sebring, FL 33876
- Registration hours are included in the Official IMSA SR/Schedule



» TO INFIELD / RED CIRCLE TEAM PARKING

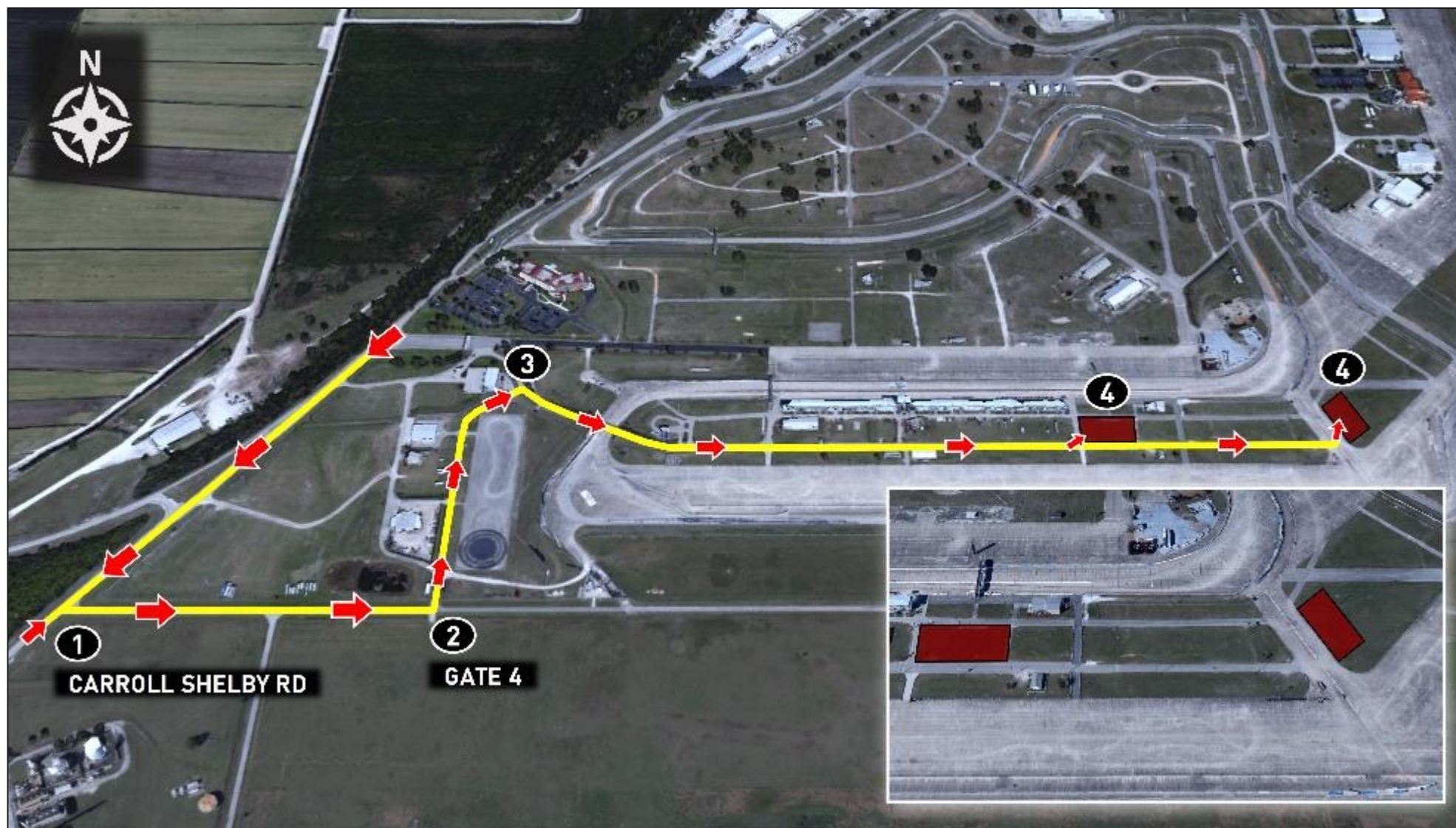


Directions

1. Take Haywood Taylor Blvd to Carroll Shelby Rd.
2. Turn left off Carroll Shelby Rd entering track via Gate 4
3. Proceed on route crossing over bridge into infield
4. Park in designated Red Circle infield parking areas

Notes

- Red Circle parking pass required for entry
- Valid from Wed, Mar 13 - Sat, Mar 16
- IMSA annual hangtags, credentials, or purple stickers will not grant access to Red Circle parking



» TO ULMANN TEAM PARKING

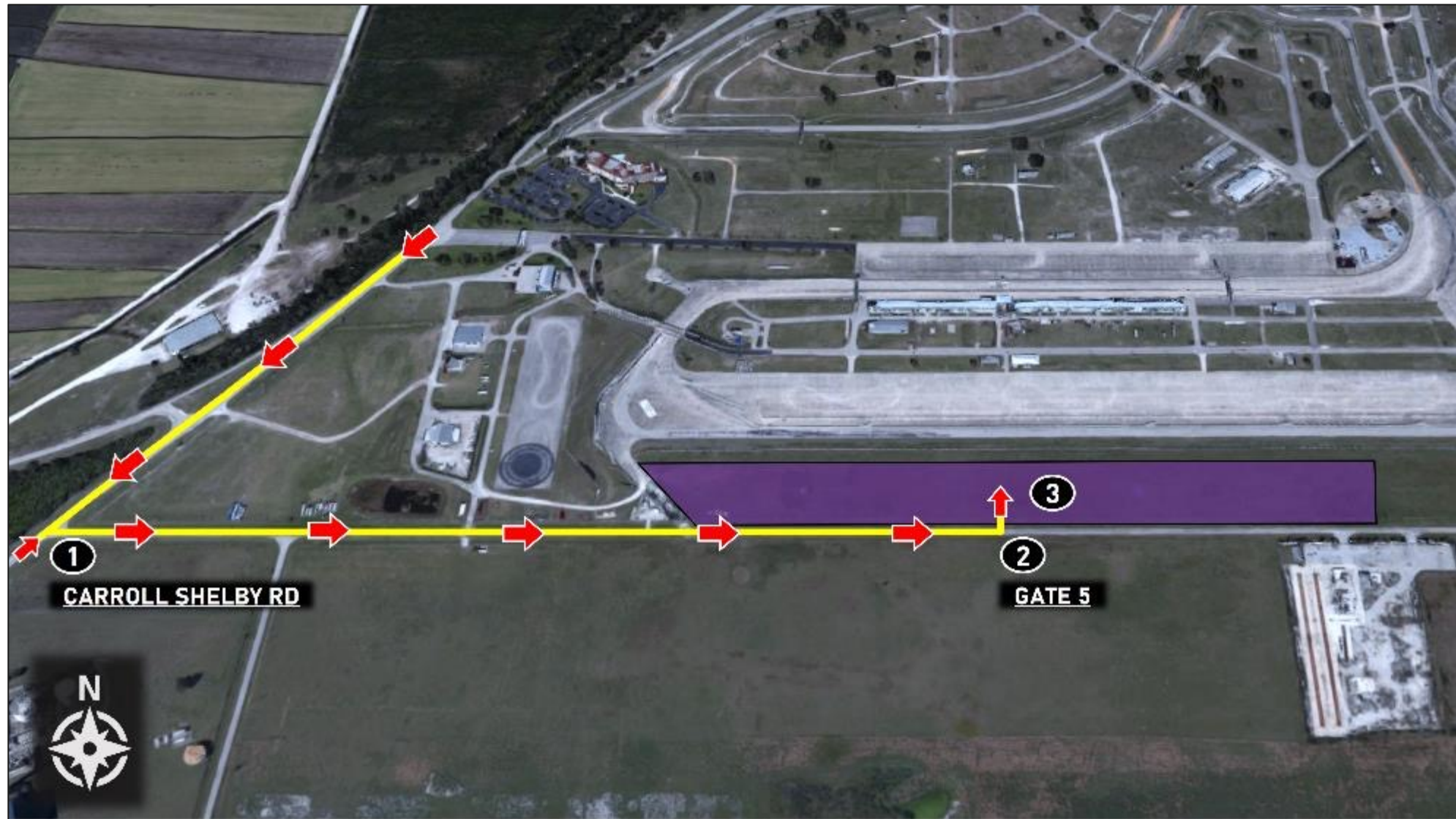


Directions

1. Take Haywood Taylor Blvd to Carroll Shelby Rd
2. Turn left off Carroll Shelby Rd entering track via Gate 5
3. Park in designated Ulmann parking area

Notes

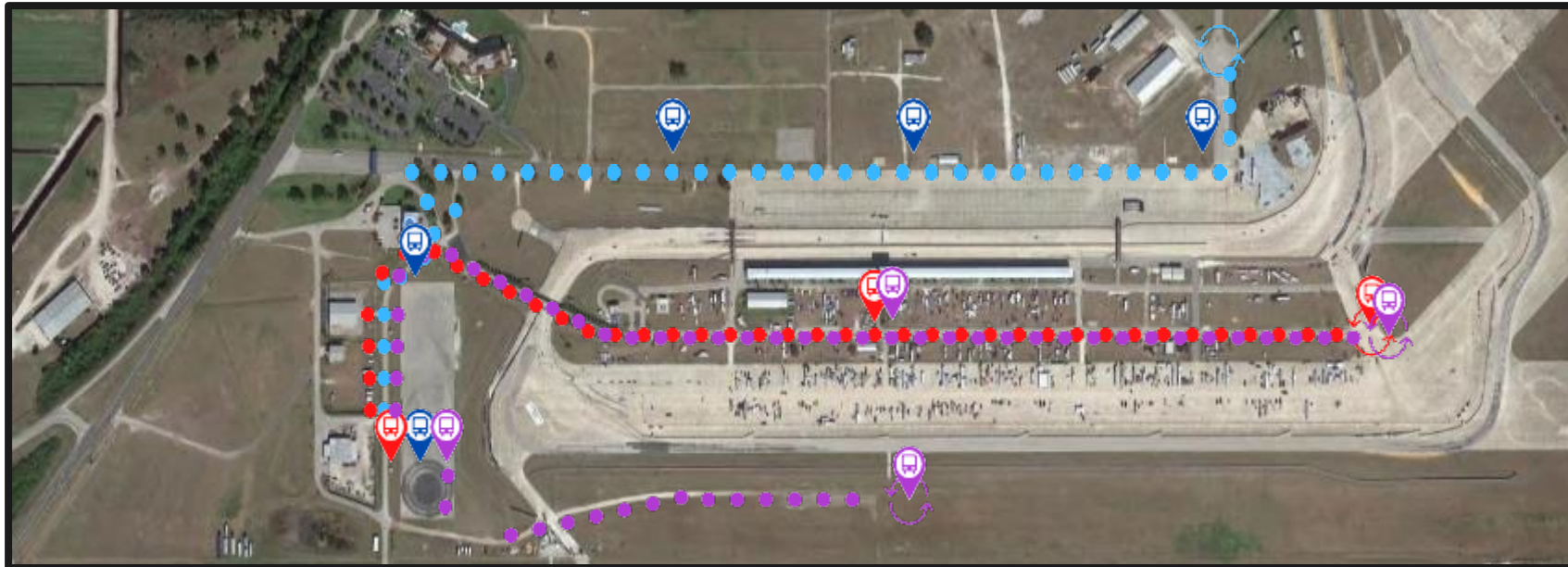
- Valid from Wed, Mar 13 - Sat, Mar 16
- Tram service available from Ulmann to Paddock
- IMSA annual hangtags, credentials, or purple stickers required for entry



SHUTTLE / TRAMS

SHUTTLE / TRAM SCHEDULE:

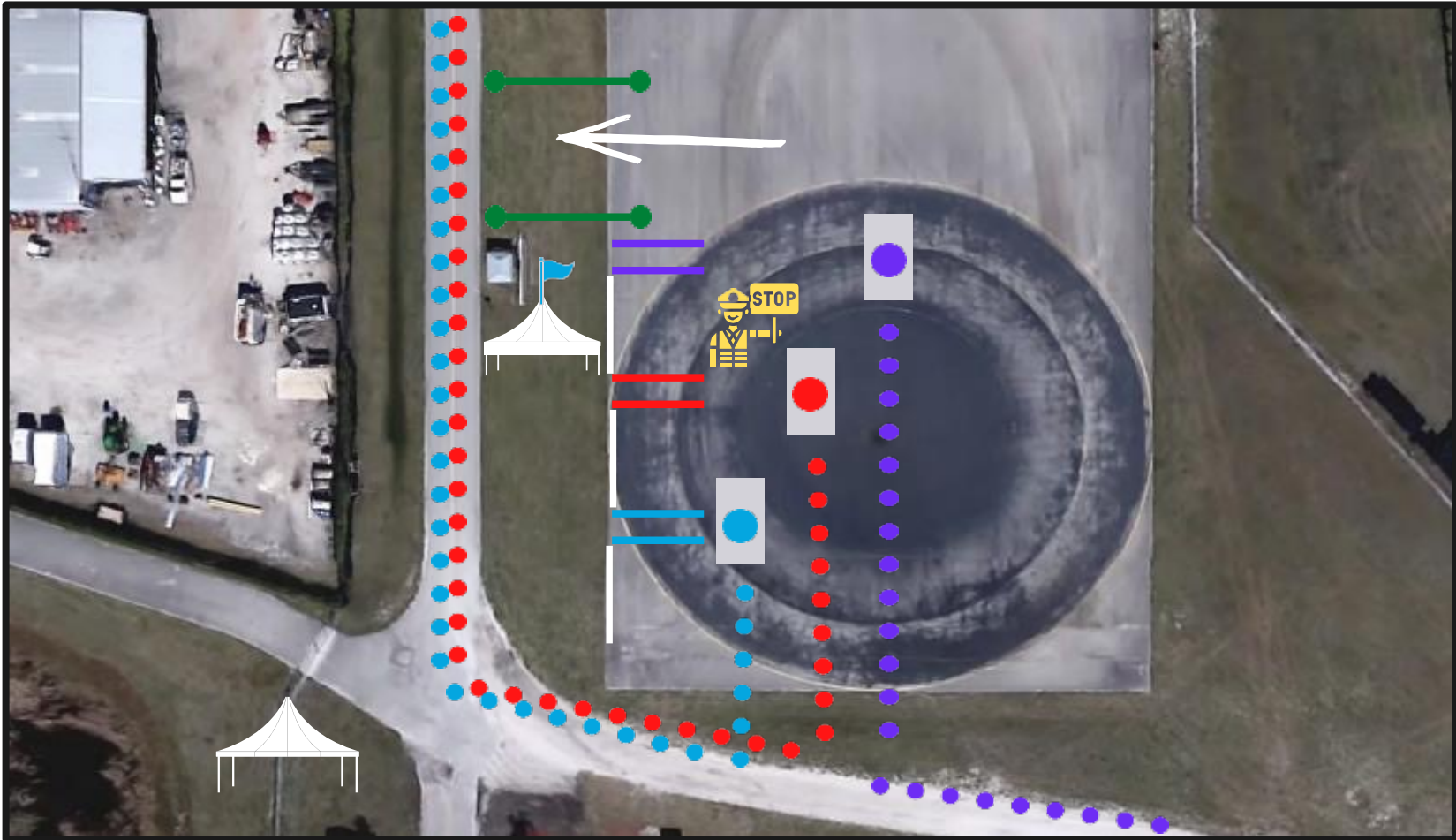
WEDNESDAY, MARCH 13 TH	6:30 AM – 7:00 PM
THURSDAY, MARCH 14 TH	6:30 AM – 11:00 PM
FRIDAY, MARCH 15 TH	6:30 AM – 11:00 PM
SATURDAY, MARCH 16 TH	6:00 AM – 11:00 PM



During morning and evening times, trams go directly from Ulman / IMSA Competitor Lot to the Competitor Paddock.

TRAM CENTRAL STATION

- M** MIDWAY
- P** PADDOCK
- U** ULMANN



IMSA SEVERE WEATHER PLAN

- IMSA continues to use DTN Weather Service with Lightning Detection.
- Notifications will be sent the same as past years:
 - Within 30 miles of the track – an advisory message will be sent for informational purposes.
 - Within 20 miles of the track – a cautionary message will be sent to increase awareness and trigger protective actions for personnel and equipment, as needed.
 - Within 8 miles of the track – a full-stop message will be sent to notify personnel to stop all activities and seek shelter due to potentially dangerous conditions.
 - IMSA will continue to send periodic updates through the messaging service anytime on-track activities are under a “full-stop” warning.
 - When severe weather has moved out of the area, an “all-clear” message will be transmitted.

This year, IMSA will be using an internal messaging service. The advantages for this service are: (1) text messages sent to all credentialed attendees for event and (2) there is no longer a need to provide a recipient list.

» CARE CENTER LOCATION



Notes

- Care Center located adjacent to Pit Lane on Eastern end, closest to Pit Out
- Care Center Hours
 - + Wed 3/13, 8:00 A - 6:00 P
 - + Thr 3/14, 7:30 A - 10:00 P
 - + Fri 3/15, 8:00 A - 9:00 P
 - + Sat 3/16, 7:00 A - 11:00 P

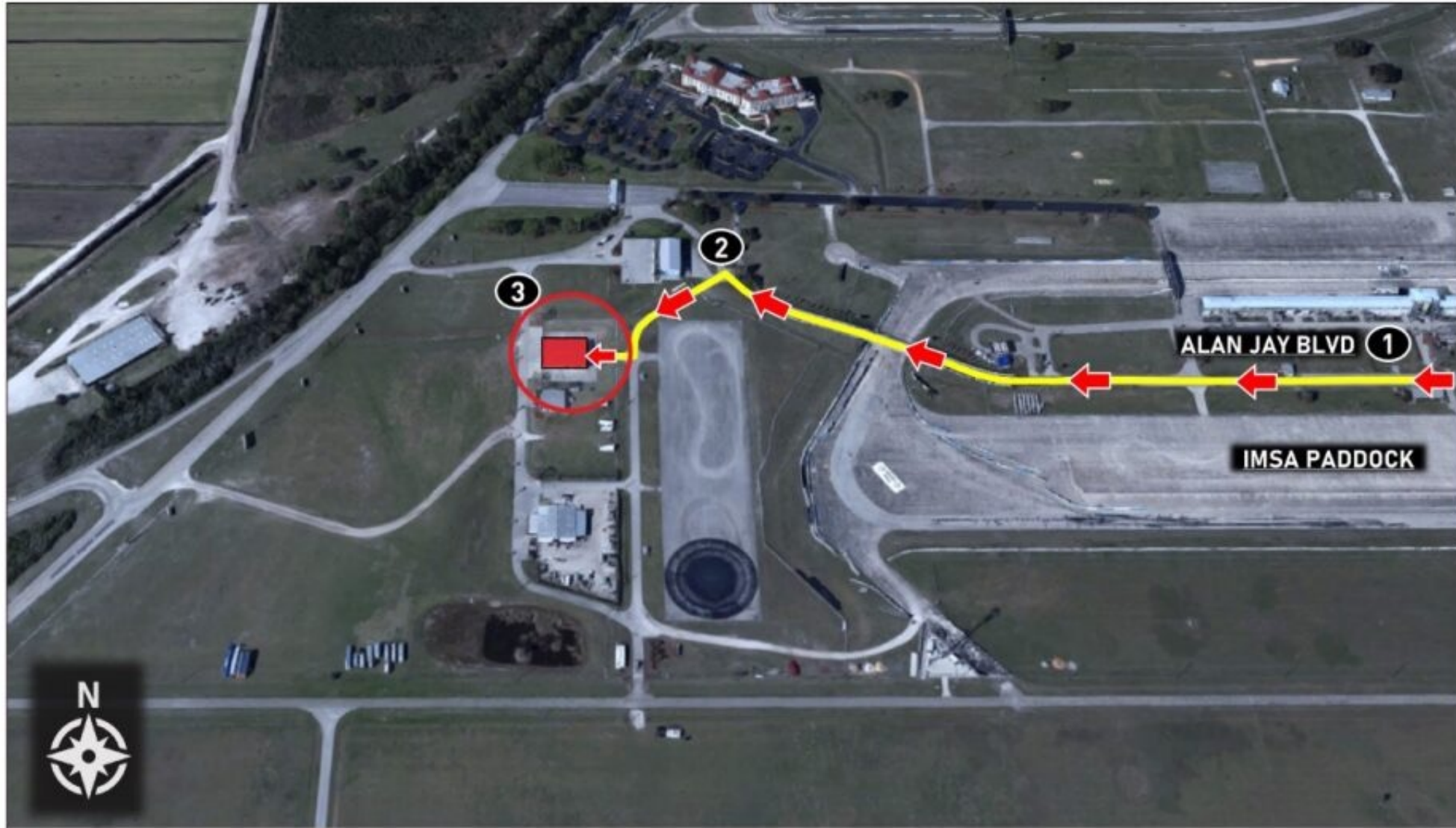


Directions

1. Exit paddocks to Alan Jay Blvd and cross bridge
2. Turn left at Sebring office building and proceed adjacent to skid pad
3. Team/Driver Briefings will be inside the Ariens Demonstration Center

Notes

- Briefing times are included in the Official IMSA SR/Schedule
- Proper credentials required for paddock/infield re-entry



MERG

DURING EVENT USES

- Discontinue participation in Event before Race
- Chassis Change

AFTER QUALIFYING

- Engine Change
- Request to change one (1) tire
- Request to change more than one (1) tire

DURING RACE

- Retire from Race

IMSA TRACK SERVICES

IMSA CHASE VEHICLES

- Chase 1
- Chase 2
- Chase 3
- Chase 4

ON-TRACK ASSISTANCE

- Communication with Track Services Medic
- Neutral and power shut off
- Follow direction of on-scene Track Services personnel
- Maintain a safe speed and distance when passing on-track incidents with Track Services team members on the scene

Contact: Roy Spielmann 414.702.0905

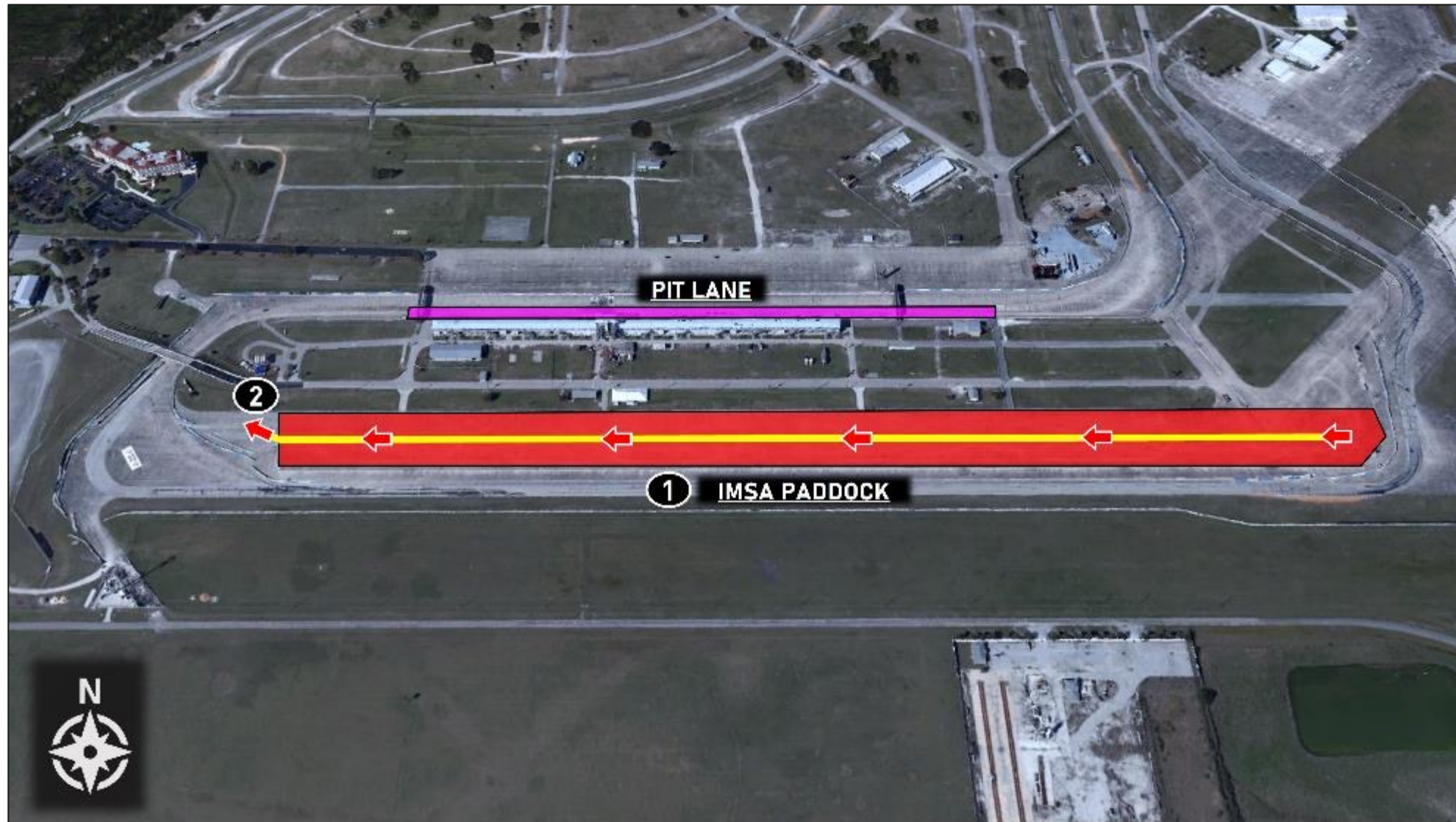


Directions

1. Exit team space (awning) and proceed west, towards Turn 17
2. Enter false grid

Notes

- Use caution and follow traffic patterns

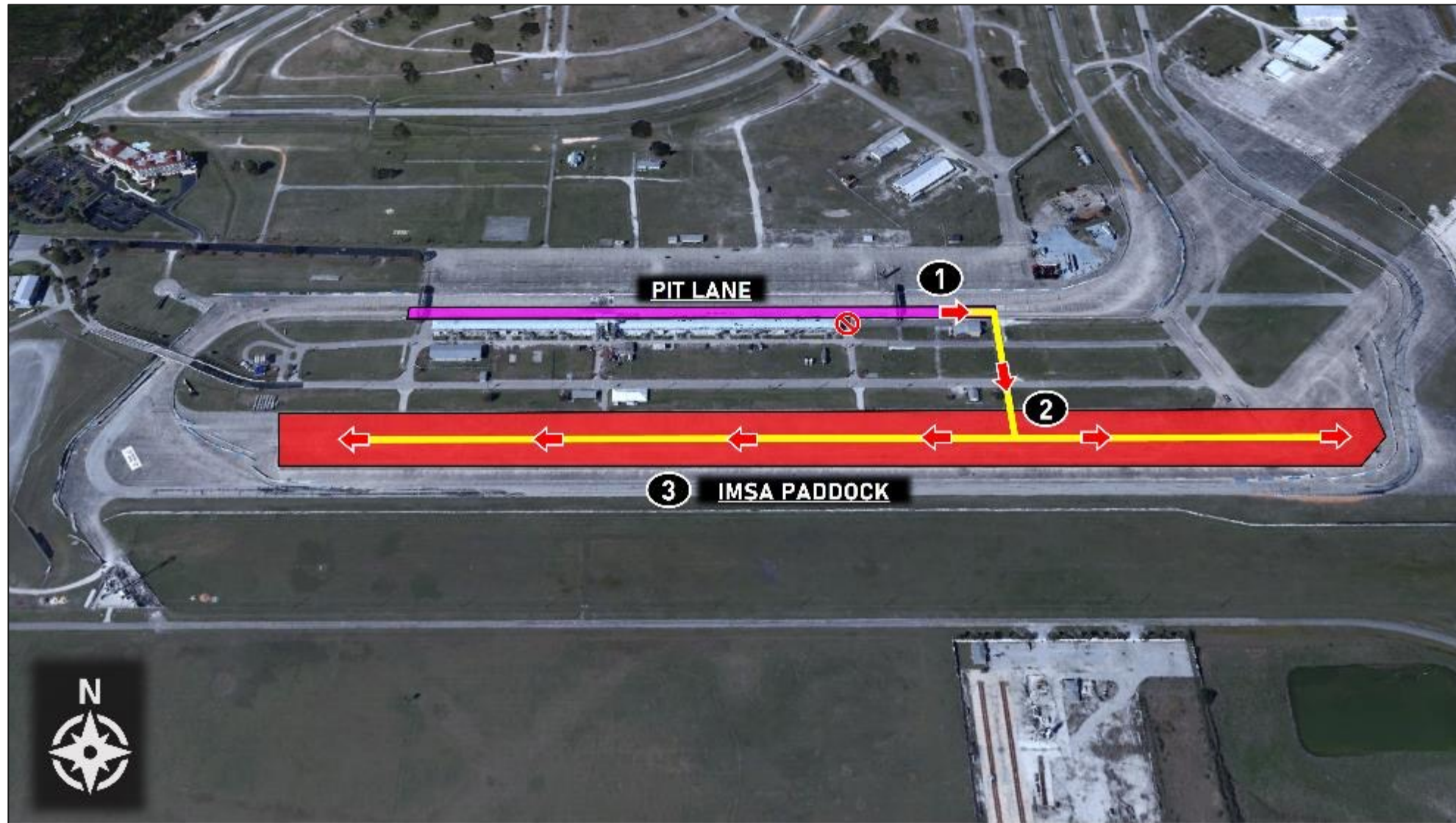


Directions

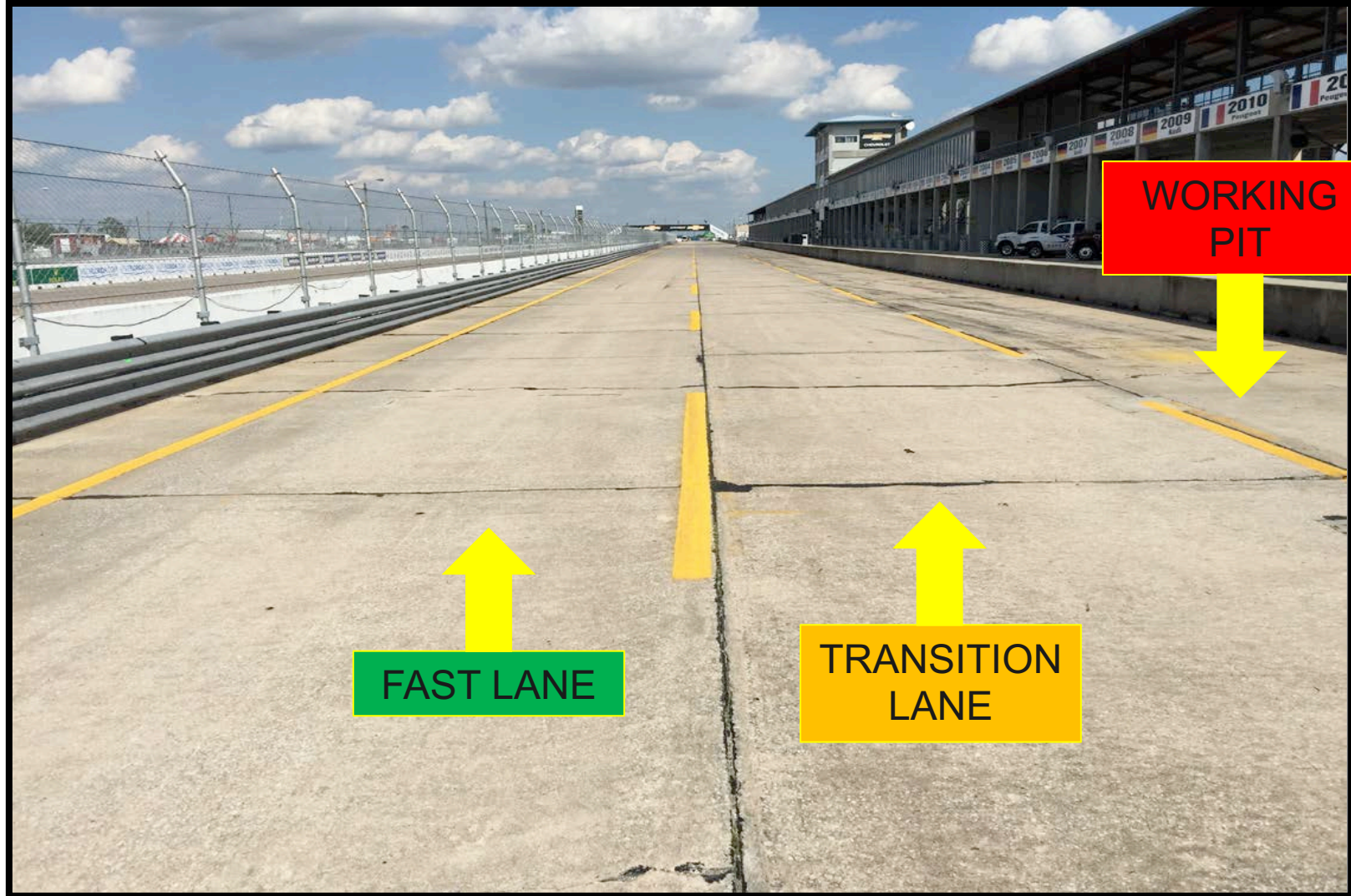
1. Exit Pit Lane at Care Center and proceed straight into IMSA paddock
2. Keep right in paddock
3. Proceed to team space

Notes

- Use caution and follow traffic patterns
- Pit Lane exit at end of Pit Structure will not be used



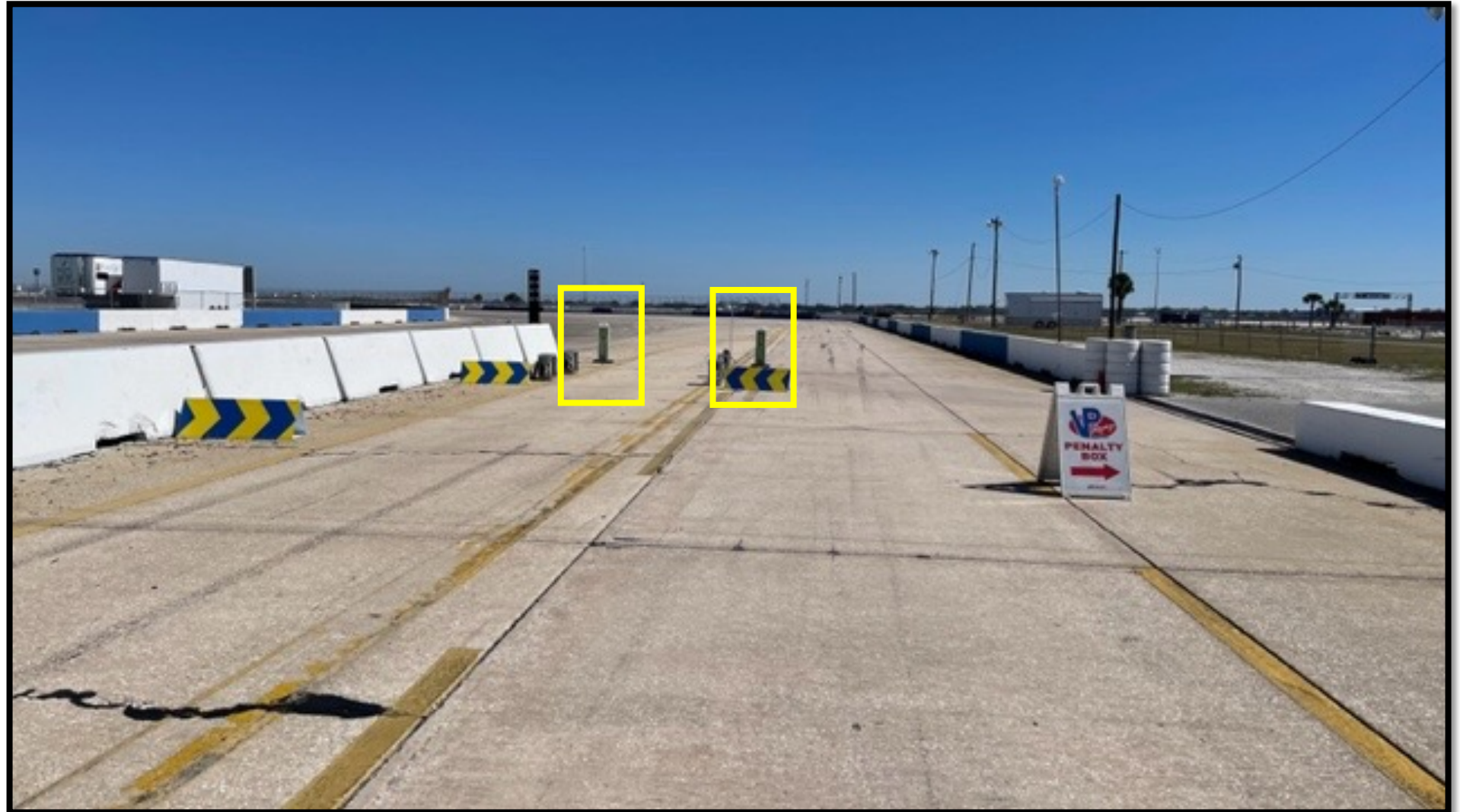
PIT LANE PROTOCOL



PIT EXIT / PENALTY BOX

Pit Exit / Penalty Box.

Pit Lane speed ends.



PIT EXIT MERGE

Cars exiting the Pit Lane must remain two wheels to the right of the Yellow merge line until it ends.

Respect the speed difference of those already on track.



ORANGE OVERLAPS

Overlaps are marked throughout the circuit and are indicated on the Official Track Map.

Competitors with disabled cars are requested to exit at these locations when unable to continue to the pits.



ORANGE OVERLAPS

Overlaps are marked throughout the circuit and are indicated on the Official Track Map.

Competitors with disabled cars are requested to exit at these locations when unable to continue to the pits.



LOCAL YELLOW LIGHT AT TURN 17

Used to signify a local Yellow.

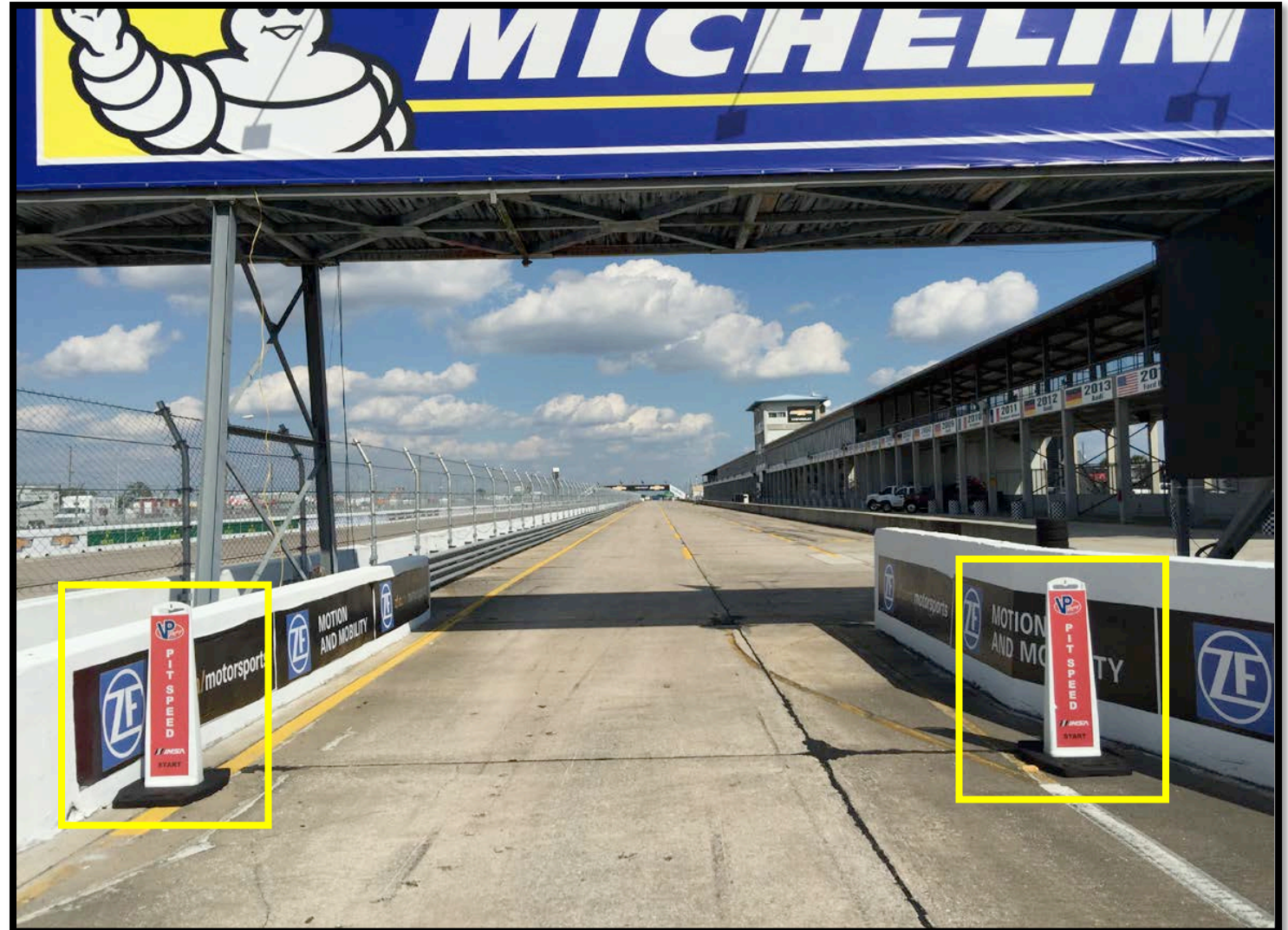
Solid Yellow Light.

Not part of the IMSA Yellow light system.



PIT LANE SPEED LIMIT

Pit Lane speed limit begins at Red pylons.



QUALIFYING

LENGTH OF SESSION – 15 mins Green Flag time (20 minutes allocated on schedule)

- Have a plan!
- Don't all leave Pit Lane as one group?
- Be respectful of others if not at race speed!

Maximum Lap Times for Qualifying

IMSA will set and apply Maximum Lap Times to manage Qualifying and inappropriate conduct of Cars during qualifying. If necessary, penalties for violations may be escalated

- A maximum lap time is defined for each Event
- The defined maximum lap times must not be exceeded during qualifying
- Where weather changes the track conditions significantly, the maximum lap time is not enforced
- The decision of the Race Director to apply or not apply a penalty for maximum lap time is Conclusive

Maximum Lap Time for continuous laps during Qualifying

- The maximum continuous lap time is based on 107% of the prior year's fastest qualifying lap for an Event with previous lap time data
- For a track without previous data, or in situations where track conditions have changed enough to make the previous year's lap times irrelevant, the time is based on 107% of the fast lap from the practice sessions at that event
- **This year's Sebring maximum lap time will be calculated after both Practice sessions**

QUALIFYING

Maximum Lap Times for Qualifying

Maximum Lap Time for out-laps and in-laps during Qualifying

- The maximum lap time for out- and in-laps is based on 130% of the prior year's fastest qualifying lap for an event with previous lap time data
- For a track without previous data, or in situations where track conditions have changed enough to make the previous year's lap times irrelevant, the time is based on 130% of the fast lap from the practice sessions at that event
- The maximum lap time for out- and in-laps is measured from the pit-out loop to S/F and/or from S/F to the pit-in loop
- **This year's Sebring maximum lap time will be calculated after both Practice sessions**

Penalty for exceeding Maximum Lap times

- Any driver exceeding these maximum times may be penalized by deletion of their two (2) fastest timed laps for each infraction

SEBRING TWELVE HOUR FAN FEST IN DOWNTOWN SEBRING

TUESDAY, MARCH 12 | 5:30 PM – 7:30 PM

DRIVER AUTOGRAPH SESSION 6:50 PM

[Downtown Sebring - Circle Park](#)

Interested in participating? It's not too late!
Contact [Emily Nash](#) or [Lucas DeBella](#) for more details

Thank you to those who have committed!



UPCOMING PROMOTIONAL / FAN OPPORTUNITIES

WATKINS GLEN INTERNATIONAL

WEDNESDAY, JUNE 19 | IMSA FAN EVENT AT LOCAL KART TRACK

INDIANAPOLIS 6 HOUR

THURSDAY, SEPTEMBER 19 | INDIANAPOLIS STREET FESTIVAL

MOTUL PETIT LE MANS

TUESDAY, OCTOBER 8 | KICKOFF PARTY SUWANEE TOWN CENTER



Interested in participating in one of these events?
Contact [Emily Nash](#) or [Lucas DeBella](#) for more details

WHELEN MAZDA MX-5 CUP

THANK YOU



WHELEN MAZDA MX-5 CUP

DRIVER & TEAM MANAGER RACE MEETING



PRE-RACE / POST-RACE

Refer to official schedule and MXM for final times and Instructions for races

IMSA TRACK SERVICES

IMSA CHASE VEHICLES

- Chase 1
- Chase 2
- Chase 3
- Chase 4

ON-TRACK ASSISTANCE

- Communication with Track Services Medic
- Neutral and power shut off
- Follow direction of on-scene Track Services personnel
- Maintain a safe speed and distance when passing on-track incidents with Track Services team members on the scene

Contact: Roy Spielmann 414.702.0905



RACE

One (1) FORMATION lap

Stay with Safety Car until Safety Car enters pits

Pack up on the way to T16 / Pair up after exiting T16, *no more tire scrubbing after T16*

Acceleration Point (Polesitter)

Jump/False start Reviews

- Gaps
- Timed/Early Acceleration
- Out of Line
- Column Passing – Passing cars in your column is NOT allowed until across the S/F line

Official Race start is FIRST time by

FULL COURSE YELLOW

Failure to maintain proper Safety Car speed and correct gaps between Cars, or otherwise initiate manipulative action to gap Cars, is prohibited and subject to penalty.

Race Control radio, in-car lights, double yellow flags displayed

Response vehicles may begin to move as soon as FCY is announced

Leader to Safety Car speed, all Cars pack up – respect the area of incident/Track Services personnel

- RC instructions regarding track condition over radio
- SC dispatched from Pit Exit

RESTART

- Maintain SC speed, let SC get away, *no more tire scrubbing after T16*

RESTART ACCELERATION ZONE – Entry to T17

- Passing on display of green flag

RESTART ACCELERATION ZONE

Restart acceleration zone is the entry to Turn 17.



ON-TRACK CONDUCT

LOCAL YELLOW FLAGS (SEE ARTICLE 27)

- No passing from point perpendicular to yellow flag to the point perpendicular to the following green flag

BLOCKING (SEE ARTICLE 30)

- Movement in reaction to the trailing Car
- Defending increases responsibility

CONTACT/INCIDENT RESPONSIBILITY (SEE ARTICLE 30)

- Review with Driver Advisor in RC
- Incidents under review announced by Race Control

COEXISTENCE

- Maintaining awareness lessens margin for error, regardless of responsibility

COMMUNICATE REVIEW REQUESTS TO PIT OFFICIALS

- Must provide time of day, location, and description of action to be reviewed

POST RACE VIDEO REVIEW WILL CONTINUE IN 2023

- Probation will continue to be used when appropriate

ON-TRACK REVIEW / EXPECTATIONS

Daytona Review

- Contact in brake zones

Sebring Specifics

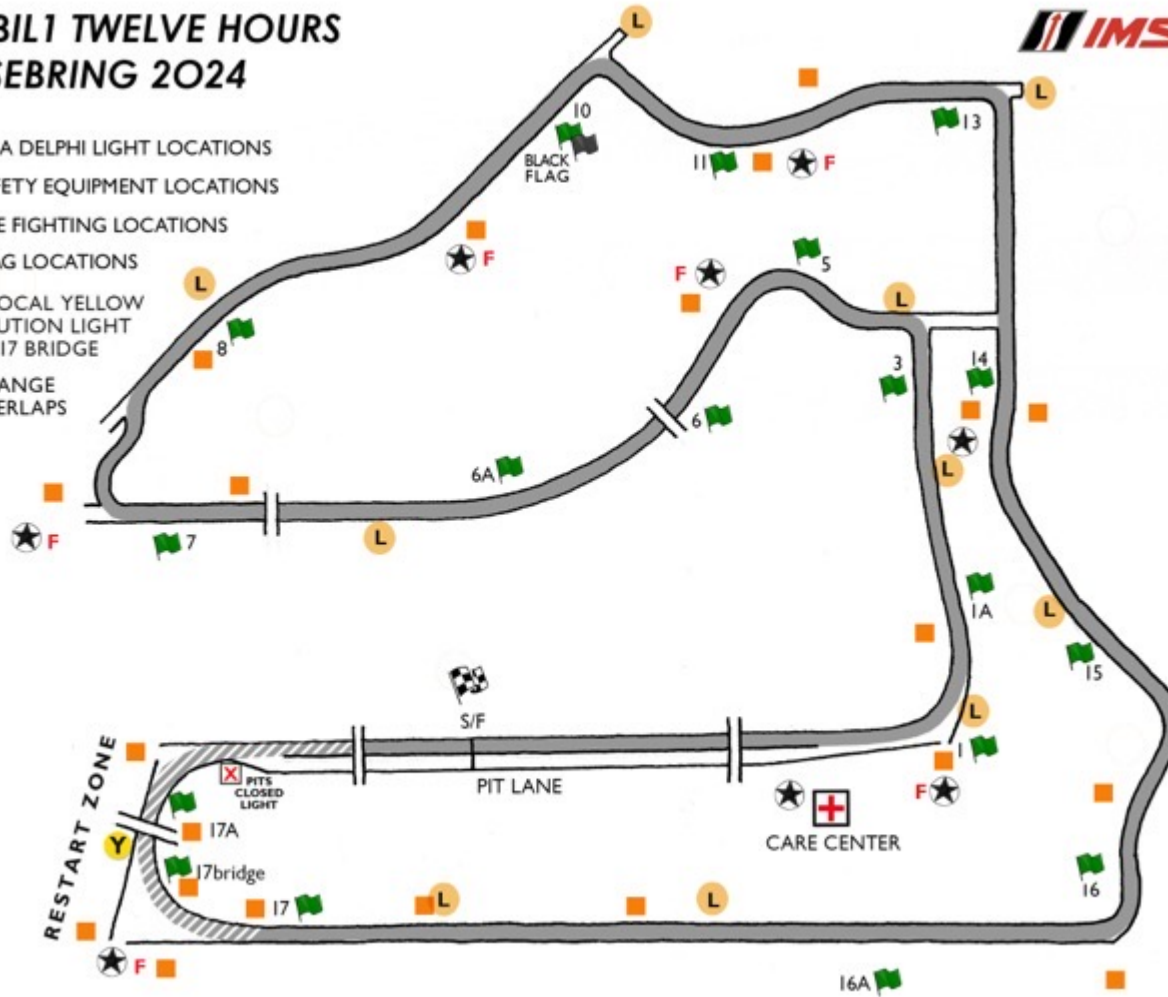
- Turn 1 - start
- Turn 3/4/5 – passing/side by side
- Turn 7 - passing
- Turn 10 – passing
- Turn 16 – passing?

TRACK MAP

MOBIL1 TWELVE HOURS OF SEBRING 2024



- L** IMSA DELPHI LIGHT LOCATIONS
- ★** SAFETY EQUIPMENT LOCATIONS
- F** FIRE FIGHTING LOCATIONS
- 🚩** FLAG LOCATIONS
- Y** - LOCAL YELLOW CAUTION LIGHT AT 17 BRIDGE
- ORANGE OVERLAPS



WHELEN MAZDA MX-5 CUP

THANK YOU

