

# PORSCHE CARRERA CUP NORTH AMERICA

## SEBRING

TEAM MANAGER MEETING

**PORSCHE**

---

**CARRERA CUP  
NORTH AMERICA**

# SERIES CONTACTS



Christoph Von Liel	One Make Manager	(424) 482-6197
Ryan Anselmo	Business Development	(424) 339-9432
Mario Brown	Technical Support	(470) 952-9509
Michael Yanase	Parts Support	(678) 938 1310
Jacob Little	Marketing Communications	(424) 473-3303

Randy Buck	Race Director	(415) 298-7018
Duane Sampson	Director, Single Make	(386) 285-7021
Cory Posocco	Paddock Logistics	(386) 566 8313
Scott Ellison	Technical	(754) 621-9130
Johnny Knotts	Pit Lane Supervisor	(813) 763-4669
Gayle Burnham	Administration	(386) 235-7800
David Pees	Timing & Scoring	(386) 308-8866
Ryan McLean	Medical Liaison	(386) 285-6913
Roy Spielmann	Track Services	(414) 702-0905
Robert Bosworth	Safety & Security	(704) 728-8087

# IMSA RESOURCES

IMSA COMPETITOR LANDING PAGE:

<https://www.imsa.com/competitors/>

- Team Portal
- Event Information
- Rules & Regulations
- Marketing & Branding Page

IMSA NOTICE BOARD:

<http://results.imsa.com/>

- Driver & TM Briefings
- Entry Lists
- Minute by Minute
- Timing Results
- Penalties

## WELCOME TO THE 2023 IMSA COMPETITION LANDING PAGE

FOR ALL IMSA COMPETITOR INFORMATION PLEASE CLICK THE HAMBURGER MENU AT THE TOP LEFT OF THIS PAGE.

The one-stop shop for everything you'll need to get your team on track.

[2023 Team Portal](#)

[2023 Team Portal](#)

[2023 Season Test Event Information](#)

[Media Center](#)

[IMSA Marketing and Branding Resources](#)

[Race Results](#)

[Federal Challenge Pass Results](#)

[Special Michelin Fleet Pricing for Commercial/Light Truck Tires and Services - For All IMSA Members - 8 Tires Minimum Purchase](#)

[Special Michelin Discount Program for Passenger Tire - For All IMSA Members](#)

[IMSA Proud Sponsors](#)

### LATEST EVENT INFORMATION



#### Mobil 1 Twelve Hours Of Sebring

Mar 15 to Mar 18

Sebring, FL

Resources:

[Provisional Schedule & SR 1/18/23](#)

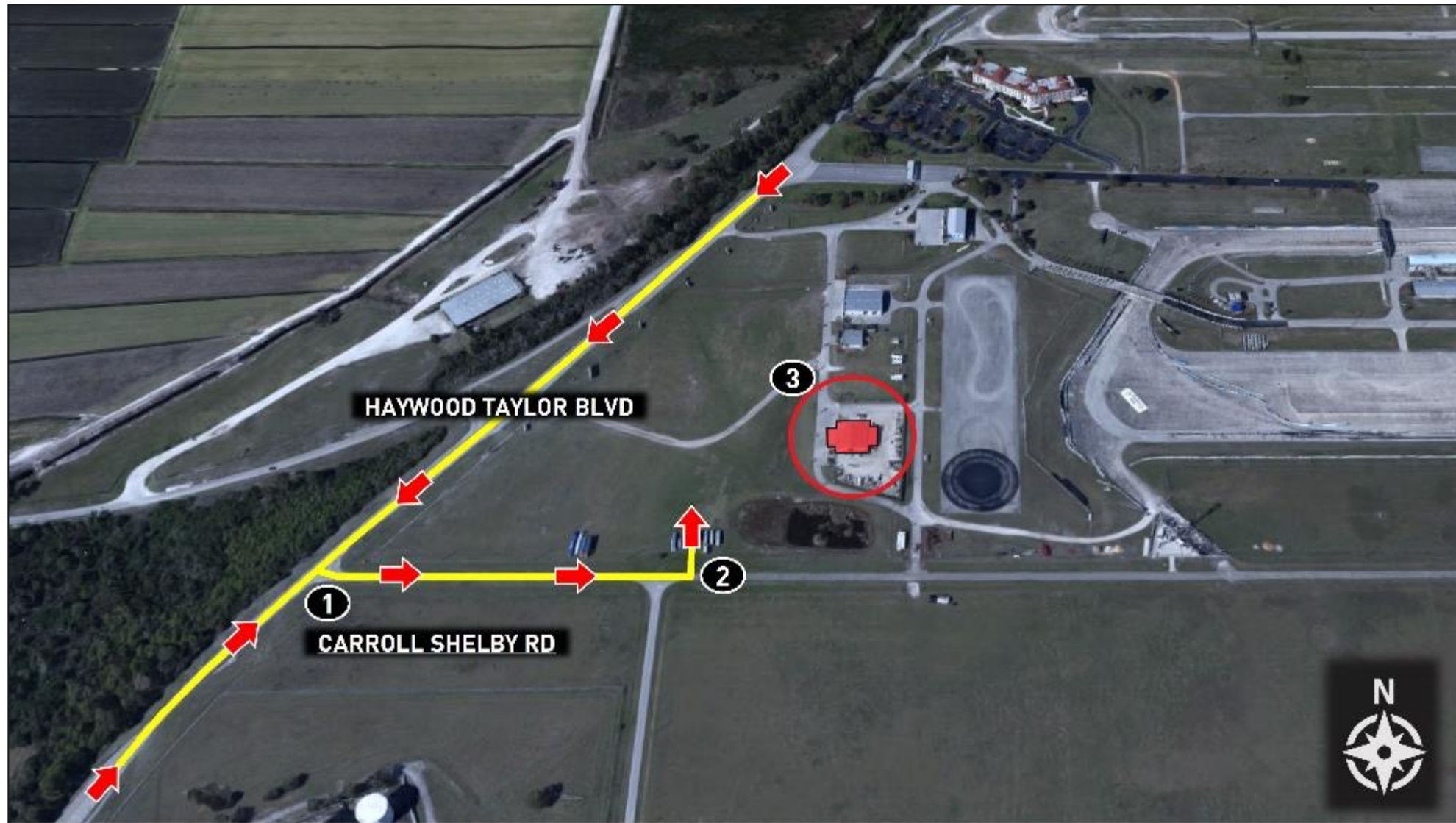
The screenshot shows the IMSA Noticeboard interface. At the top, there's the IMSA logo and 'NOTICEBOARD' text. On the right, there are links for 'TIMING RESULTS' and 'LIVE TIMING'. Below this, there's a search bar with 'SEASON' and 'EVENT' dropdowns. The main content area shows a list of navigation items for the 'MOBIL 1 - DAYTONA INTERNATIONAL SPEEDWAY, SEASON 2023' event, including 'OFFICIAL SCHEDULE - K2', 'PIT BEEF ASSIGNMENT'S', 'TRACK & SECTOR MAP', 'TRACK MAP - K2', 'DRIVING PHOTOS', 'IMPC DRIVER BRIEFING', 'IMSC DRIVER BRIEFING', 'IMC & DRIVER BRIEFING', 'CHANNEL LIST', 'MOBILE ON CHANNEL LIST', 'ENTRY LIST', 'IMPC PIR RACE ENTRY LIST - K2', 'IMSC PIR RACE ENTRY LIST', and 'IMC & PIR RACE ENTRY LIST'. The right side of the page features a large image of a driver's helmet with an American flag design.

## Directions

1. Take Haywood Taylor Blvd to Carroll Shelby Rd
2. Take first left to access road leading to IMSA Registration parking area
3. Follow signage to IMSA Registration (red shaded area)

## Notes

- Address: 150 Earwood Blvd, Sebring, FL 33876
- Registration hours are included in the Official IMSA SR/Schedule



# EVENT INFORMATION

---

## INFIELD PARKING

- PCCNA Teams receive one (1) infield parking passes per entry – **Red Circle Parking**.
- PCCNA passes valid Wednesday – Friday.
- Available for pickup on Tuesday from IMSA Challenge / Single Make Series Transporter.
  - Any passes not picked up on Tuesday will be available at IMSA Registration on Wednesday.

## ULMANN / IMSA COMPETITOR LOT

- 2024 IMSA Annual Credential, Single Event Credential, or 2024 Annual Parking Pass (Hangtag) accepted.
- Walkover gates open prior to and after each day's activity.

# » TO INFIELD / RED CIRCLE TEAM PARKING

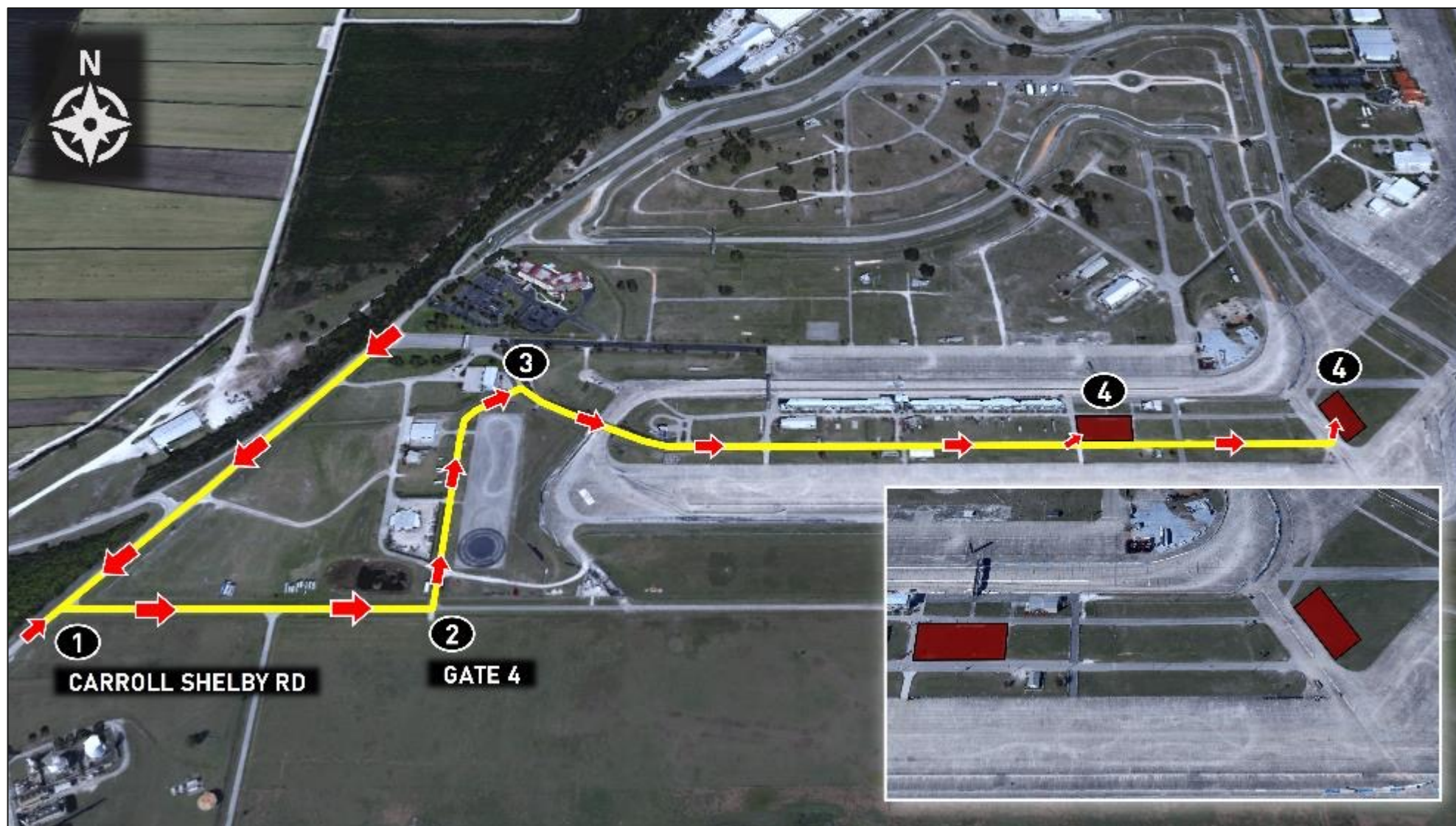


## Directions

1. Take Haywood Taylor Blvd to Carroll Shelby Rd.
2. Turn left off Carroll Shelby Rd entering track via Gate 4
3. Proceed on route crossing over bridge into infield
4. Park in designated Red Circle infield parking areas

## Notes

- Red Circle parking pass required for entry
- Valid from Wed, Mar 13 - Sat, Mar 16
- IMSA annual hangtags, credentials, or purple stickers will not grant access to Red Circle parking



# » TO ULMANN TEAM PARKING

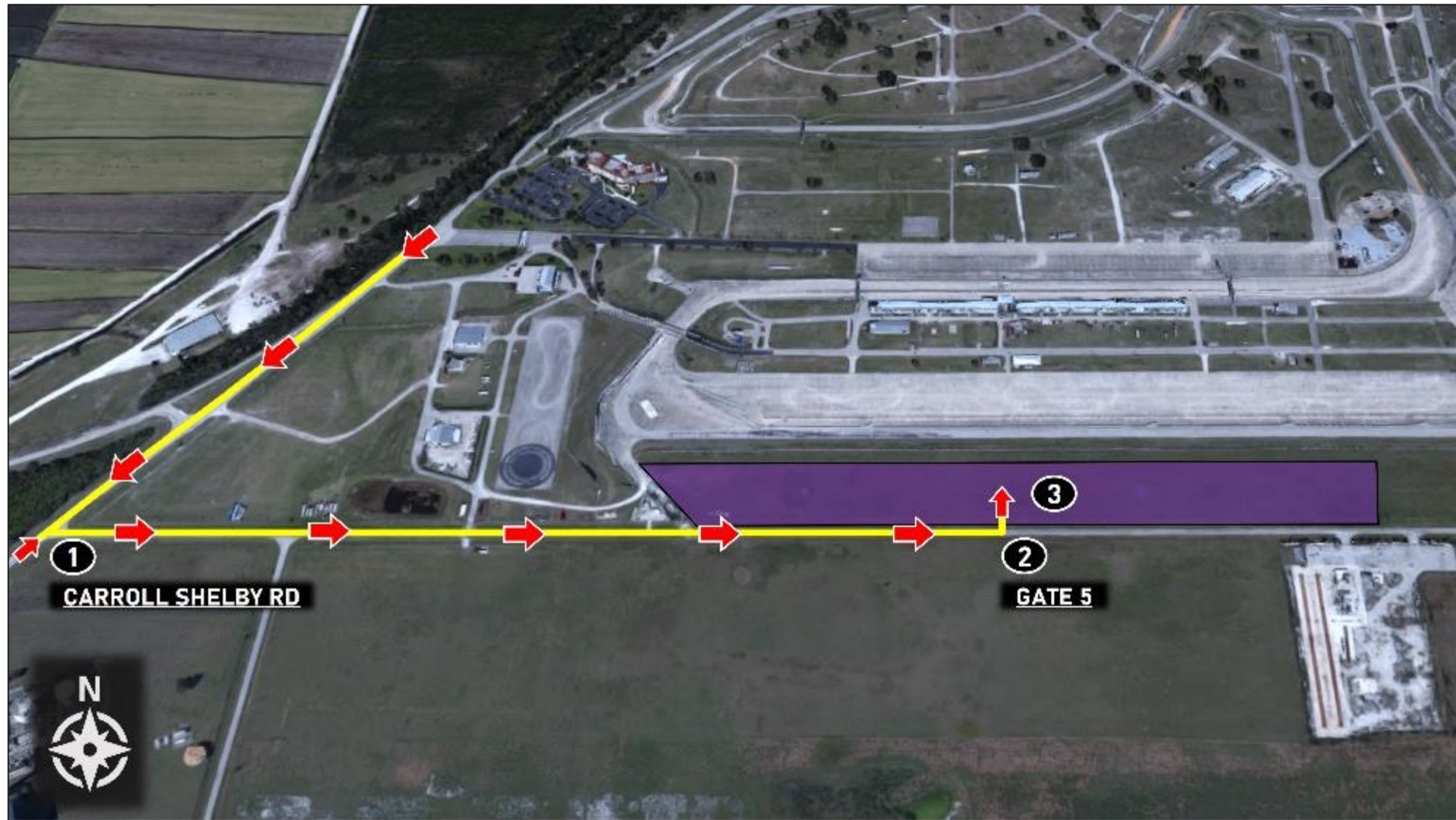


## Directions

1. Take Haywood Taylor Blvd to Carroll Shelby Rd
2. Turn left off Carroll Shelby Rd entering track via Gate 5
3. Park in designated Ulmann parking area

## Notes

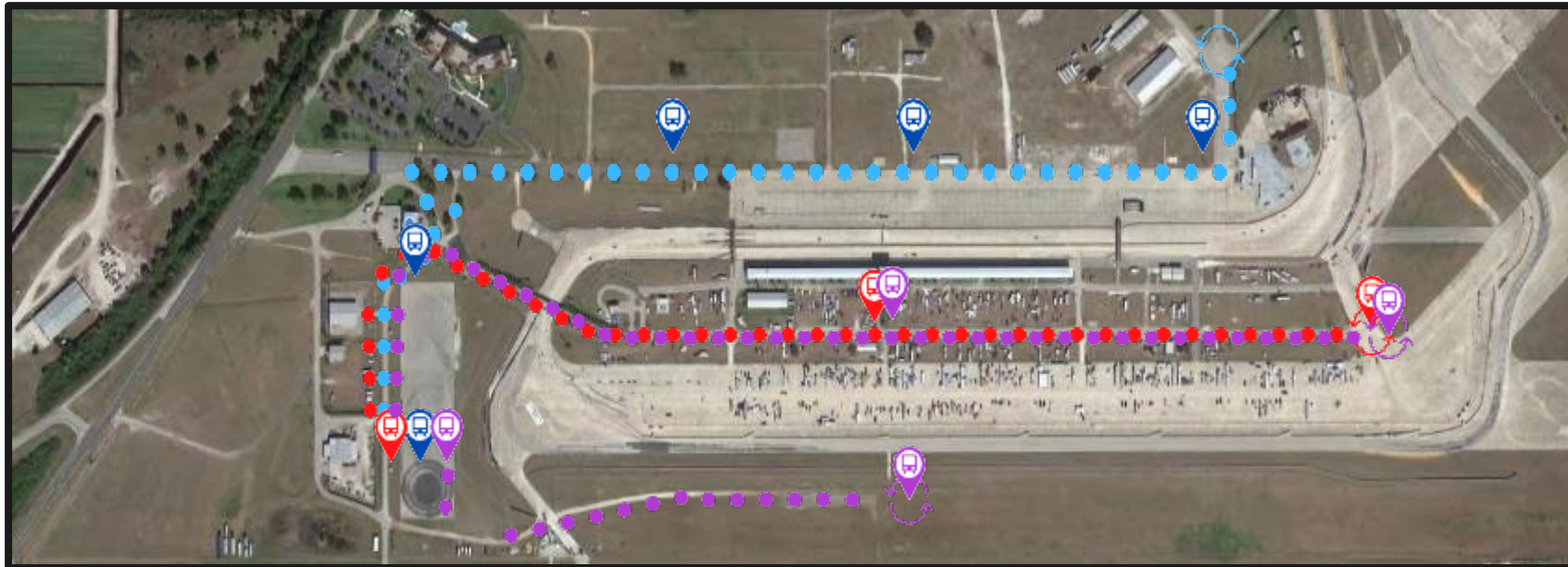
- Valid from Wed, Mar 13 - Sat, Mar 16
- Tram service available from Ulmann to Paddock
- IMSA annual hangtags, credentials, or purple stickers required for entry



# SHUTTLE / TRAMS

## SHUTTLE / TRAM SCHEDULE:

WEDNESDAY, MARCH 13 <sup>TH</sup>	6:30 AM – 7:00 PM
THURSDAY, MARCH 14 <sup>TH</sup>	6:30 AM – 11:00 PM
FRIDAY, MARCH 15 <sup>TH</sup>	6:30 AM – 11:00 PM
SATURDAY, MARCH 16 <sup>TH</sup>	6:00 AM – 11:00 PM

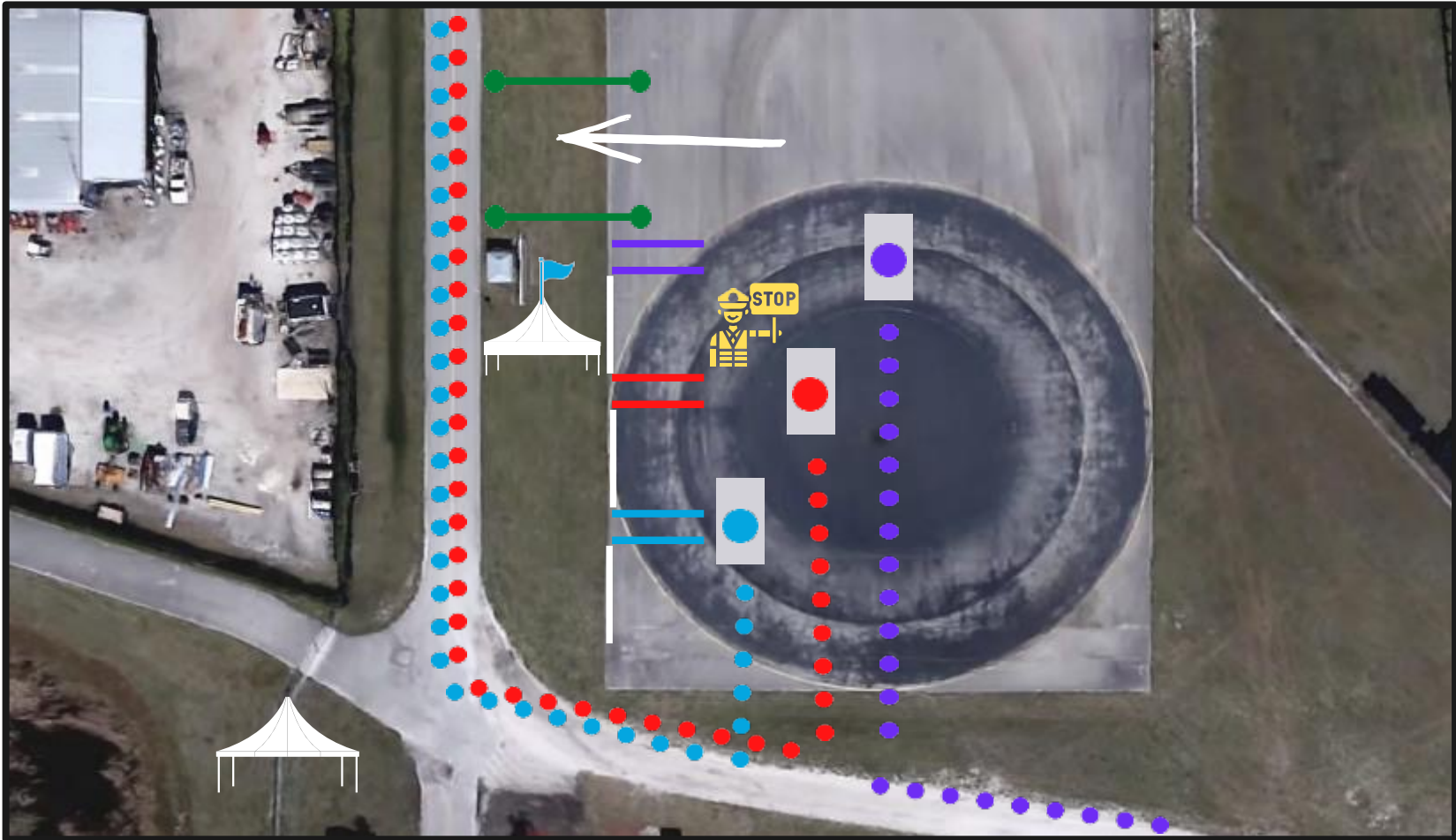


During morning and evening times, trams go directly from Ulman / IMSA Competitor Lot to the Competitor Paddock.



# TRAM CENTRAL STATION

- M** MIDWAY
- P** PADDOCK
- U** ULMANN



# IMSA SEVERE WEATHER PLAN

---

- IMSA continues to use DTN Weather Service with Lightning Detection.
- Notifications will be sent the same as past years:
  - Within 30 miles of the track – an advisory message will be sent for informational purposes.
  - Within 20 miles of the track – a cautionary message will be sent to increase awareness and trigger protective actions for personnel and equipment, as needed.
  - Within 8 miles of the track – a full-stop message will be sent to notify personnel to stop all activities and seek shelter due to potentially dangerous conditions.
    - IMSA will continue to send periodic updates through the messaging service anytime on-track activities are under a “full-stop” warning.
  - When severe weather has moved out of the area, an “all-clear” message will be transmitted.

**This year, IMSA will be using an internal messaging service. The advantages for this service are: (1) text messages sent to all credentialed attendees for event and (2) there is no longer a need to provide a recipient list.**

# » CARE CENTER LOCATION



## Notes

- Care Center located adjacent to Pit Lane on Eastern end, closest to Pit Out
- Care Center Hours
  - + Wed 3/13, 8:00 A - 6:00 P
  - + Thr 3/14, 7:30 A - 10:00 P
  - + Fri 3/15, 8:00 A - 9:00 P
  - + Sat 3/16, 7:00 A - 11:00 P

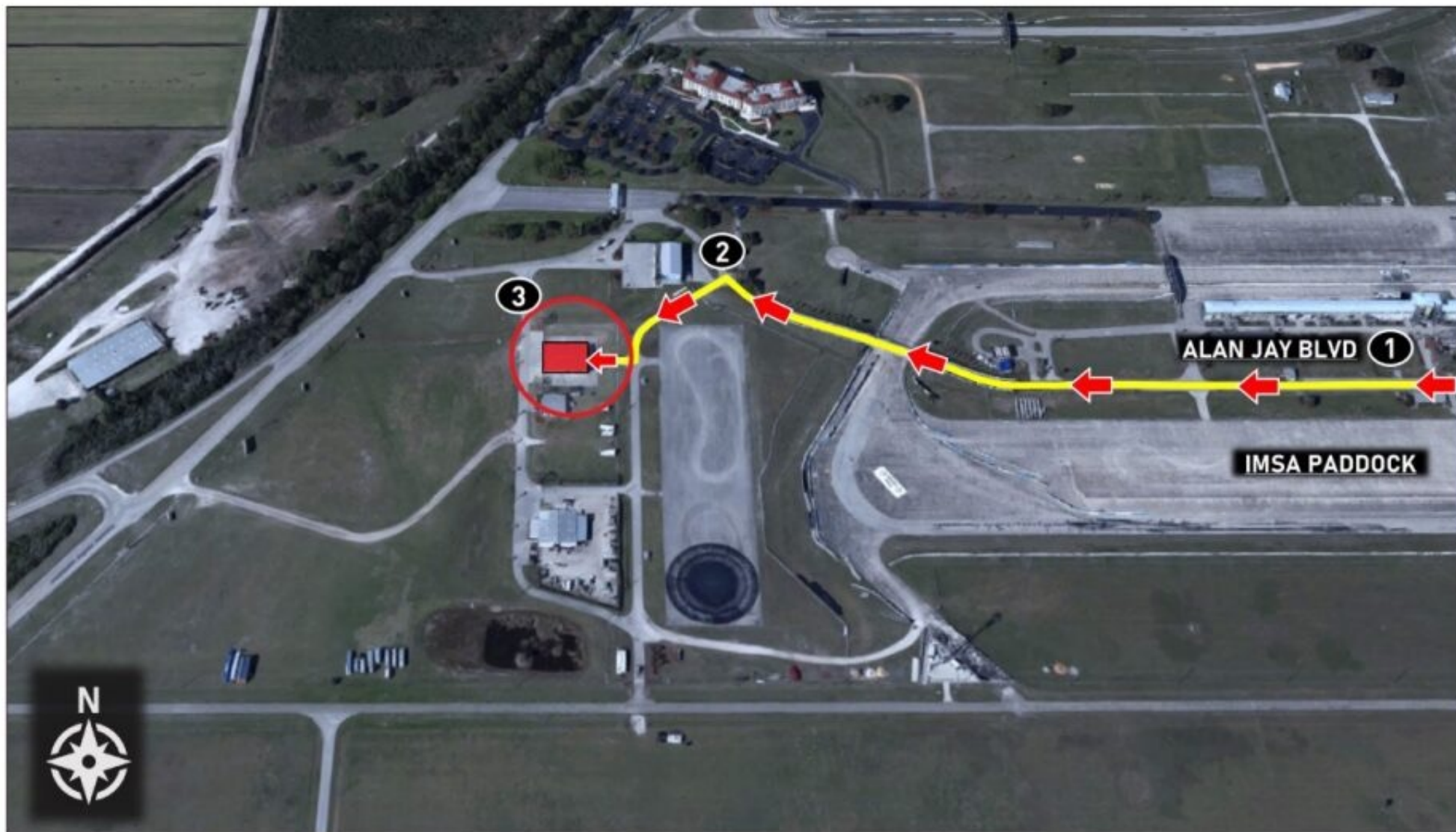


## Directions

1. Exit paddocks to Alan Jay Blvd and cross bridge
2. Turn left at Sebring office building and proceed adjacent to skid pad
3. Team/Driver Briefings will be inside the Ariens Demonstration Center

## Notes

- Briefing times are included in the Official IMSA SR/Schedule
- Proper credentials required for paddock/infield re-entry



# BRIEFINGS

---

## **TEAM MANAGER BRIEFING**

- Tuesday, March 12<sup>th</sup> at 3:30 PM

## **NEW DRIVER (TO PCCNA OR SIR) BRIEFING – For all drivers new to the series**

- Wednesday, March 13<sup>th</sup> at 11:30 AM

## **DRIVER & TEAM MANAGER BRIEFING**

- Thursday, March 14<sup>th</sup> at 11:30 AM

## **LOCATION**

- Ariens Demonstration Center Garage at track entrance
- Will need a Sebring-specific golf cart pass to regain access to paddock

# MERG

---

## **DURING EVENT USES**

- Discontinue participation in Event before Race
- Register Joker tires

## **AFTER QUALIFYING**

- Engine Change
- Request to change one (1) tire
- Request to change more than one (1) tire

## **DURING RACE**

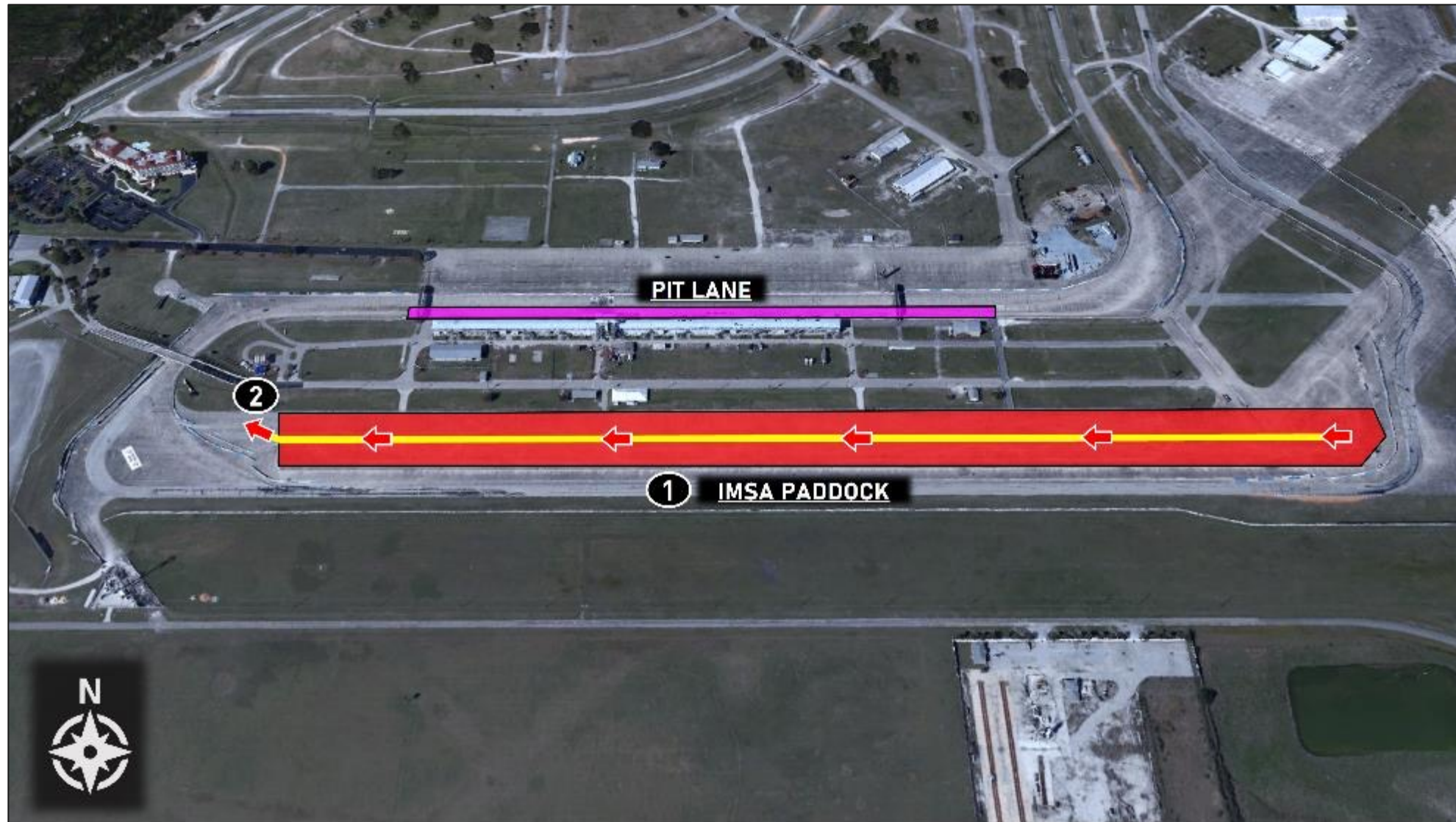
- Retire from Race

## Directions

1. Exit team space (awning) and proceed west, towards Turn 17
2. Enter false grid

## Notes

- Use caution and follow traffic patterns

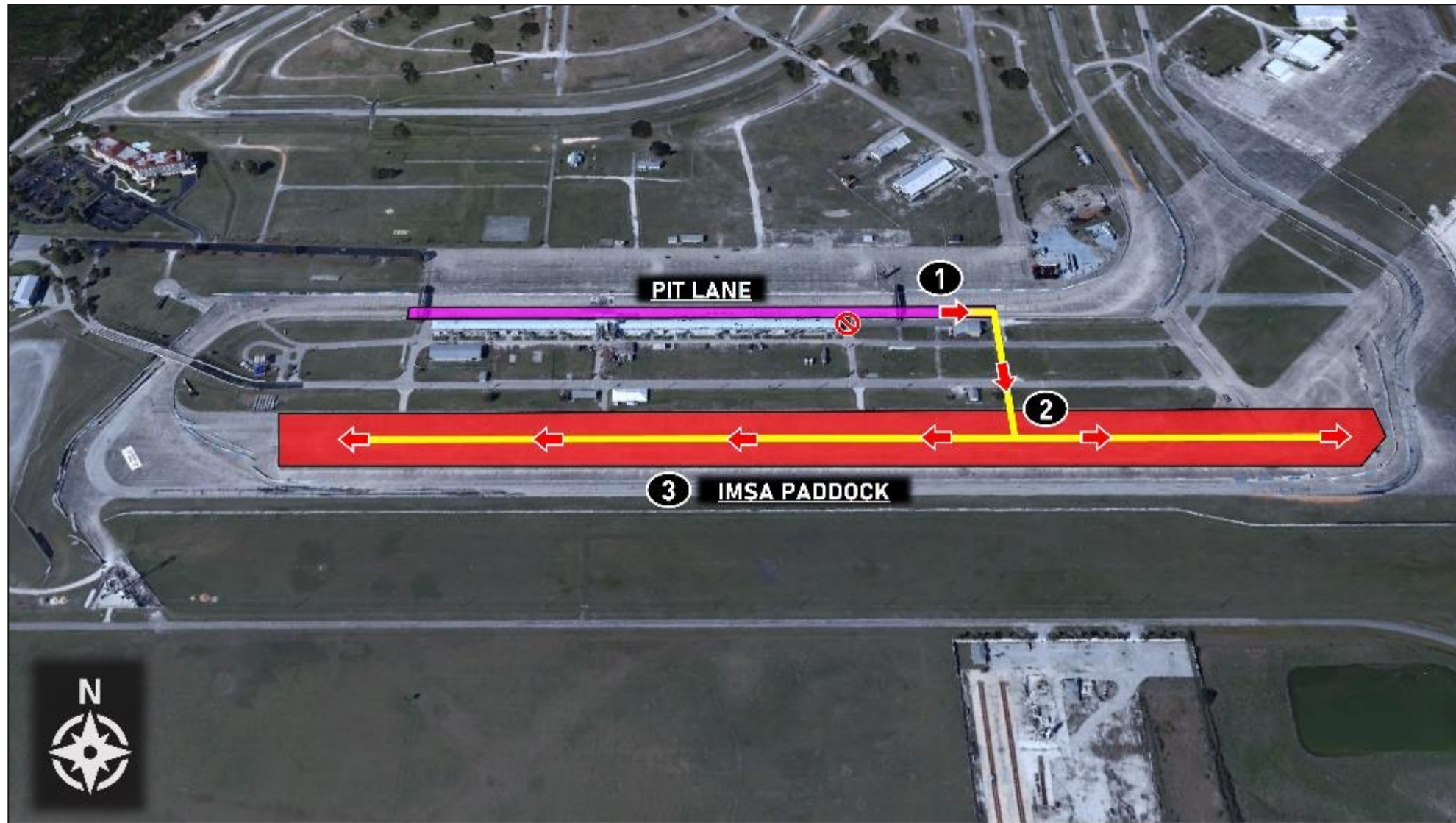


## Directions

1. Exit Pit Lane at Care Center and proceed straight into IMSA paddock
2. Keep right in paddock
3. Proceed to team space

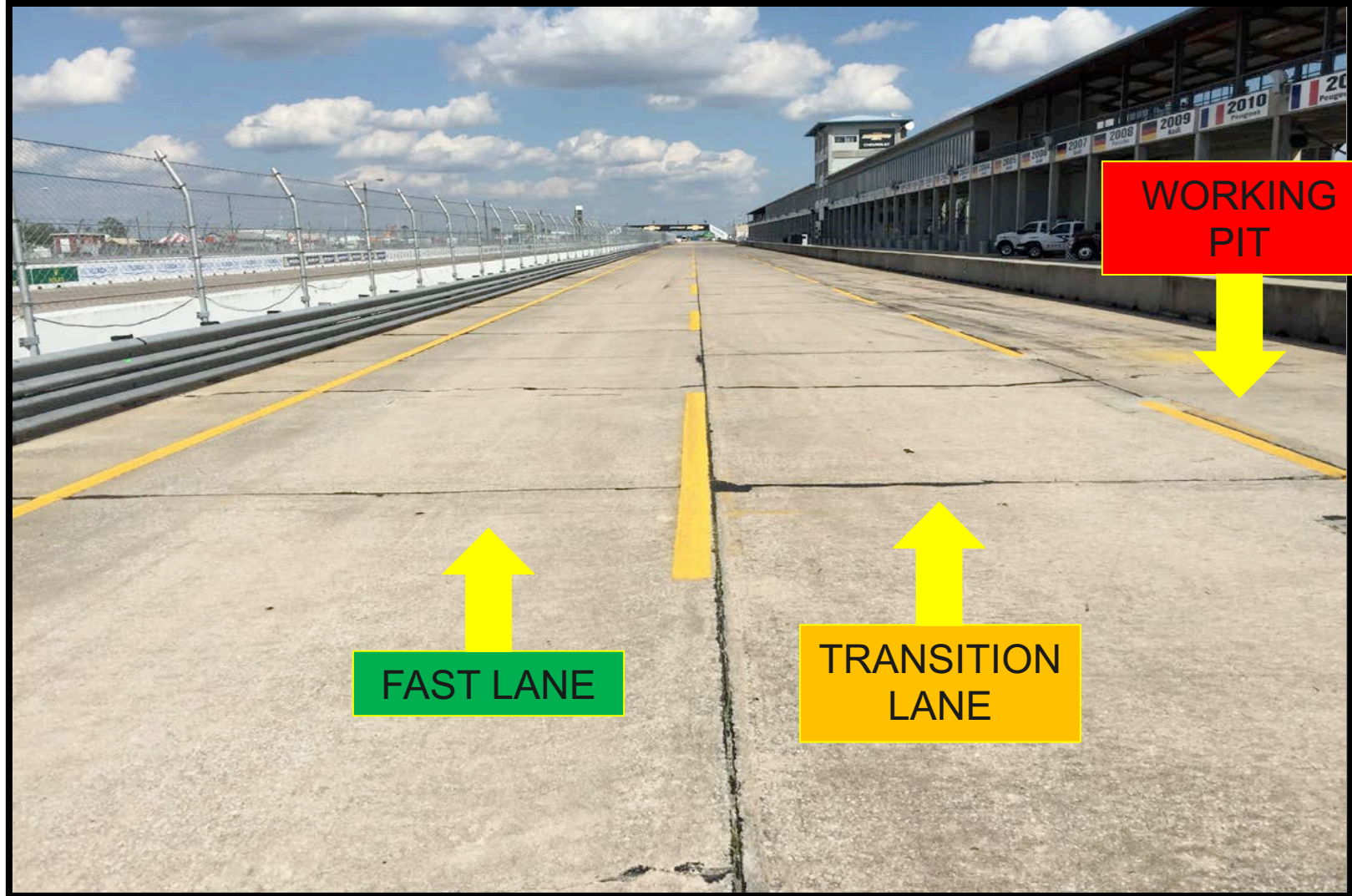
## Notes

- Use caution and follow traffic patterns
- Pit Lane exit at end of Pit Structure will not be used





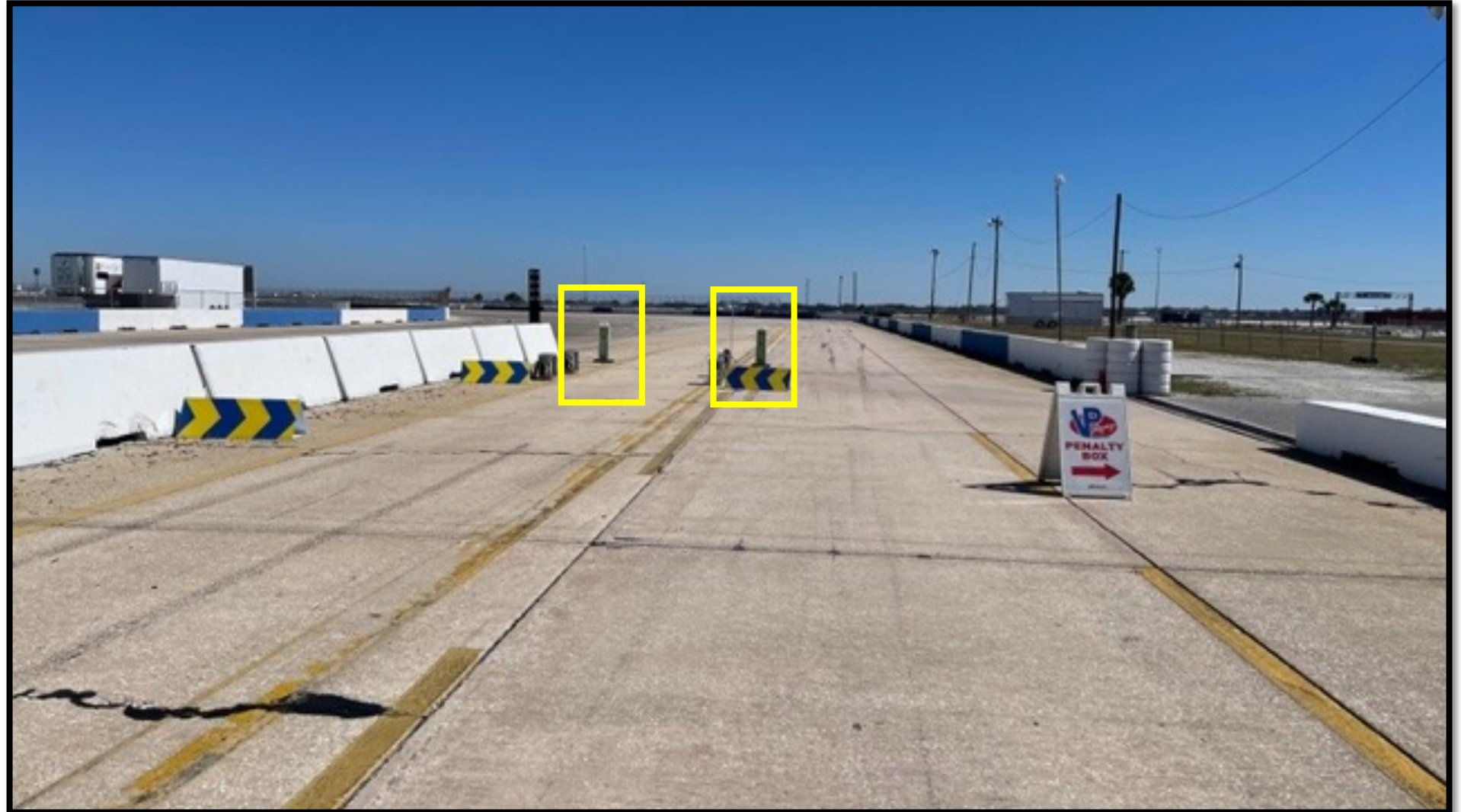
# PIT LANE PROTOCOL



# PIT EXIT / PENALTY BOX

Pit Exit / Penalty Box.

Pit Lane speed ends.



# PIT EXIT MERGE

Cars exiting the Pit Lane must remain two wheels to the right of the Yellow merge line until it ends.

Respect the speed difference of those already on track.



# ORANGE OVERLAPS

Overlaps are marked throughout the circuit and are indicated on the Official Track Map.

Competitors with disabled cars are requested to exit at these locations when unable to continue to the pits.



# ORANGE OVERLAPS

Overlaps are marked throughout the circuit and are indicated on the Official Track Map.

Competitors with disabled cars are requested to exit at these locations when unable to continue to the pits.



# LOCAL YELLOW LIGHT AT TURN 17

Used to signify a local Yellow.

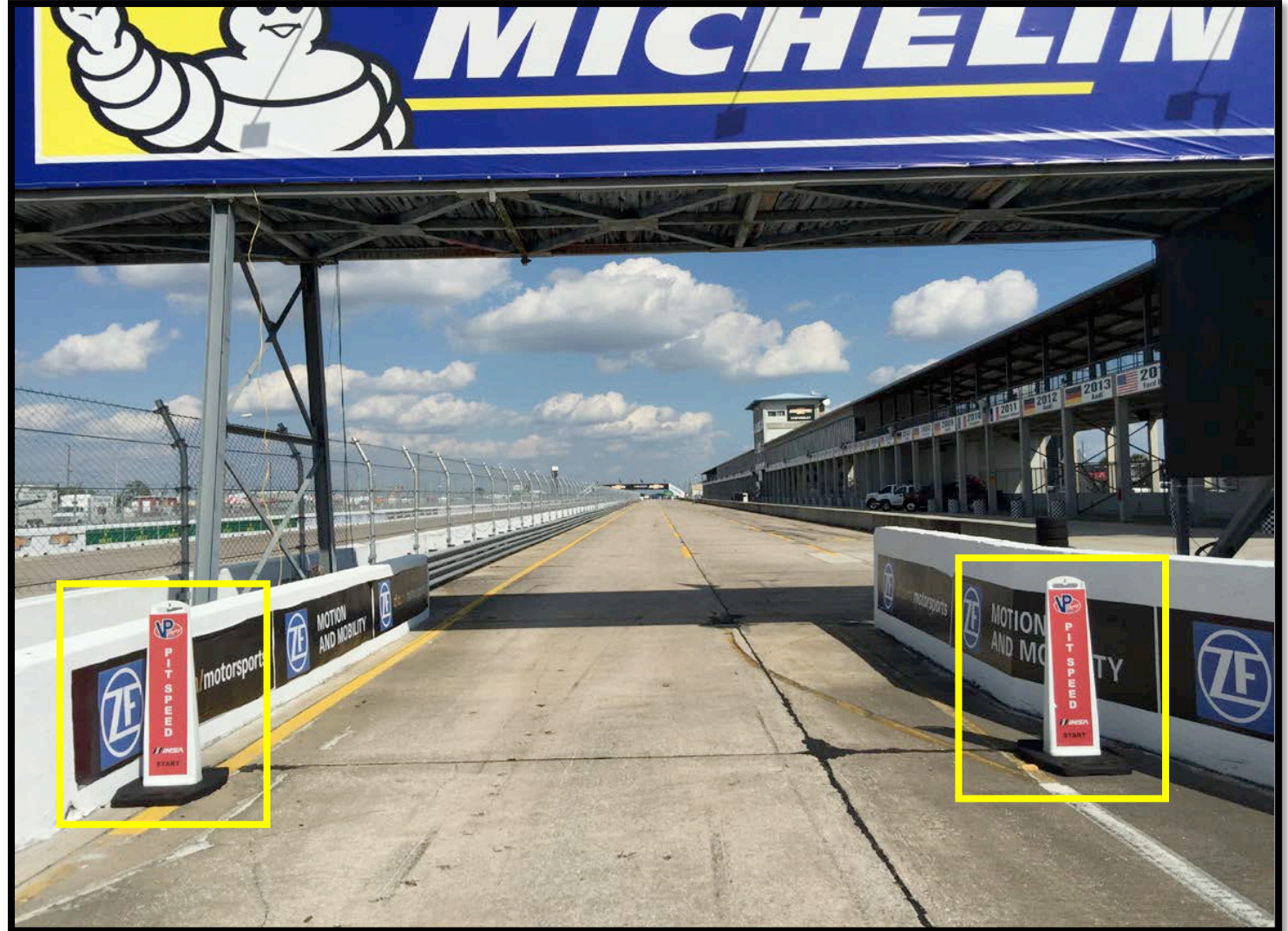
Solid Yellow Light.

Not part of the IMSA Yellow light system.



# PIT LANE SPEED LIMIT

Pit Lane speed limit begins at Red pylons.



# ON-TRACK CONDUCT

---

## COMMUNICATE REVIEW REQUESTS TO PIT OFFICIALS

- Must provide time of day, location, and description of action to be reviewed

## POST RACE VIDEO REVIEW WILL CONTINUE IN 2023

- Probation will continue to be used when appropriate



# SEBRING TWELVE HOUR FAN FEST IN DOWNTOWN SEBRING

TUESDAY, MARCH 12 | 5:30 PM – 7:30 PM

DRIVER AUTOGRAPH SESSION 6:50 PM

[Downtown Sebring - Circle Park](#)

Interested in participating? It's not too late!  
Contact [Emily Nash](#) or [Lucas DeBella](#) for more details

Thank you to those who have committed!



# UPCOMING PROMOTIONAL / FAN OPPORTUNITIES

## WATKINS GLEN INTERNATIONAL

WEDNESDAY, JUNE 19 | IMSA FAN EVENT AT LOCAL KART TRACK

## INDIANAPOLIS 6 HOUR

THURSDAY, SEPTEMBER 19 | INDIANAPOLIS STREET FESTIVAL

## MOTUL PETIT LE MANS

TUESDAY, OCTOBER 8 | KICKOFF PARTY SUWANEE TOWN CENTER



Interested in participating in one of these events?  
Contact [Emily Nash](#) or [Lucas DeBella](#) for more details

# PORSCHE PENFED DRIVER'S LOUNGE



## PORSCHE PENFED DRIVER'S LOUNGE

### 12 Hours of Sebring, Sebring International Raceway

**DATE:** March 13-15, 2024

**WEDNESDAY:** Breakfast 7:00 am – 10:00 am | Lunch 11:00 am – 2:00 pm | Welcome Reception 5:00 pm – 7:00 pm

**THURSDAY:** Breakfast 7:00 am – 10:00 am | Lunch 11:00 am – 2:00 pm | Dinner 5:00 pm – 8:00 pm

**FRIDAY:** Lunch 11:00 am – 2:00 pm | Dinner 5:00 pm – 9:00 pm

**LOCATION:** Porsche Penfed Driver's Lounge

**RSVP:** Please register your guest count incl. drivers, team members and guests by the latest on Wednesday, March 6, 2024.



# PORSCHE CARRERA CUP NORTH AMERICA

## SEBRING

THANK YOU

**PORSCHE**

---

**CARRERA CUP  
NORTH AMERICA**

# PORSCHE CARRERA CUP NORTH AMERICA

## SEBRING

NEW DRIVER MEETING

**PORSCHE**

---

**CARRERA CUP  
NORTH AMERICA**

# SERIES CONTACTS

**PORSCHE**  
**CARRERA CUP**  
**NORTH AMERICA**

Christoph Von Liel	One Make Manager	(424) 482-6197
Ryan Anselmo	Business Development	(424) 339-9432
Mario Brown	Technical Support	(470) 952-9509
Michael Yanase	Parts Support	(678) 938 1310
Jacob Little	Marketing Communications	(424) 473-3303



Randy Buck	Race Director	(415) 298-7018
Duane Sampson	Director, Single Make	(386) 285-7021
Cory Posocco	Paddock Logistics	(386) 566 8313
Scott Ellison	Technical	(754) 621-9130
Johnny Knotts	Pit Lane Supervisor	(813) 763-4669
Gayle Burnham	Administration	(386) 235-7800
David Pees	Timing & Scoring	(386) 308-8866
Ryan McLean	Medical Liaison	(386) 285-6913
Roy Spielmann	Track Services	(414) 702-0905
Robert Bosworth	Safety & Security	(704) 728-8087

# IMSA RESOURCES

IMSA COMPETITOR LANDING PAGE:

<https://www.imsa.com/competitors/>

- Team Portal
- Event Information
- Rules & Regulations
- Marketing & Branding Page

IMSA NOTICE BOARD:

<http://results.imsa.com/>

- Driver & TM Briefings
- Entry Lists
- Minute by Minute
- Timing Results
- Penalties

## WELCOME TO THE 2023 IMSA COMPETITION LANDING PAGE

FOR ALL IMSA COMPETITOR INFORMATION PLEASE CLICK THE HAMBURGER MENU AT THE TOP LEFT OF THIS PAGE.

The one-stop shop for everything you'll need to get your team on track.

[2023 Team Portal](#)

[2023 Team Portal](#)

[2023 Season Test Event Information](#)

[Media Center](#)

[IMSA Marketing and Branding Resources](#)

[Race Results](#)

[Federal Challenge Pass Results](#)

[Special Michelin Fleet Pricing for Commercial/Light Truck Tires and Services - For All IMSA Members - 8 Tires Minimum Purchase](#)

[Special Michelin Discount Program for Passenger Tires - For All IMSA Members](#)

[IMSA Proud Sponsors](#)

### LATEST EVENT INFORMATION



#### Mobil 1 Twelve Hours Of Sebring

Mar 15 to Mar 18

Sebring, FL

Resources:

[Provisional Schedule & SR 1/18/23](#)

The screenshot shows the IMSA Noticeboard interface. At the top, there's the IMSA logo and 'NOTICEBOARD' text. On the right, there are links for 'TIMING RESULTS' and 'LIVE TIMING'. Below this, there's a search bar with 'SEASON' and 'EVENT' dropdowns. The main content area shows a list of navigation items for the 'MOBIL 1 - DAYTONA INTERNATIONAL SPEEDWAY, SEASON 2023' event, including 'OFFICIAL SCHEDULE - K2', 'PIT BEEF ASSIGNMENT'S', 'TRACK & SECTOR MAP', 'TRACK MAP - K2', 'DRIVING PHOTOS', 'IMPC DRIVER BRIEFING', 'IMSC DRIVER BRIEFING', 'IMC & DRIVER BRIEFING', 'CHANNEL LIST', 'MOBILE ON CHANNEL LIST', 'ENTRY LIST', 'IMPC PIR RACE ENTRY LIST - K2', 'IMSC PIR RACE ENTRY LIST', and 'IMC & PIR RACE ENTRY LIST'. The right side of the page features a large image of a driver in a red and white striped racing suit.

# IMSA TRACK SERVICES

## IMSA CHASE VEHICLES

- Chase 1
- Chase 2
- Chase 3
- Chase 4

## ON-TRACK ASSISTANCE

- Communication with Track Services Medic
- Neutral and power shut off
- Follow direction of on-scene Track Services personnel
- Maintain a safe speed and distance when passing on-track incidents with Track Services team members on the scene

Contact: Roy Spielmann 414.702.0905





# FORMATION LAPS

---

## Only one (1) Formation lap

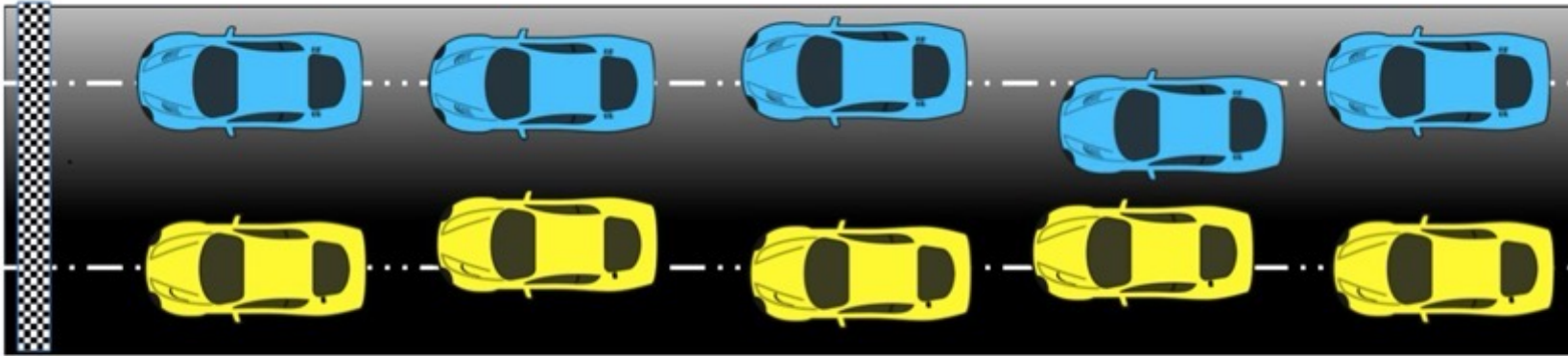
- Balance tire scrubbing/brake warming with the size of the gap to the car in front of you
- The time/space for pairing up is often VERY limited – track dependent
- Pay attention and stay close!
- 44.3.2 (SSR) A Car falling back on the formation lap(s) must not regain its starting position if all other Cars have overtaken such Car.

## Pairing up

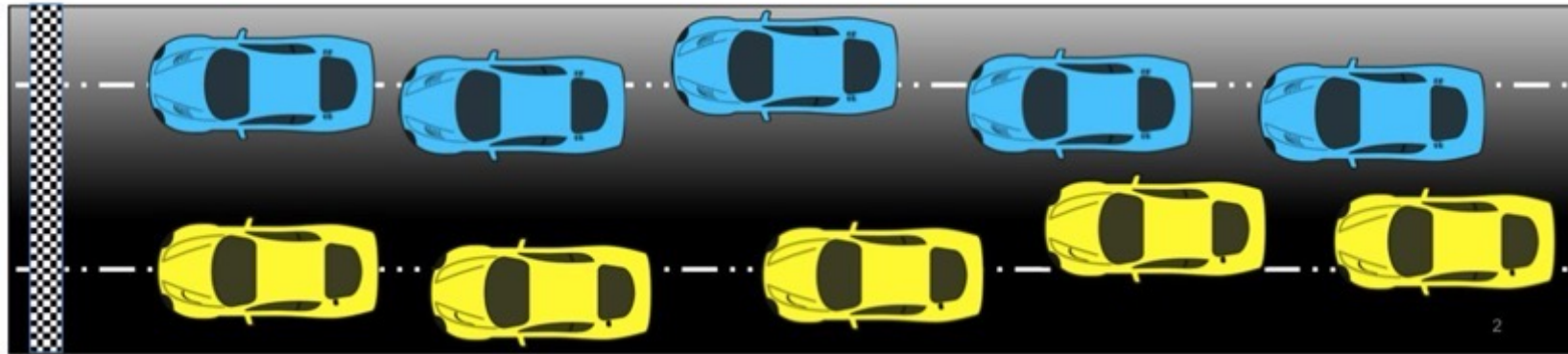
- 44.3.5 (SSR) At the time that the Cars are directed to pair up for the start, the pole sitter must take their position on the correct side of the racetrack and each successive Car must take up their appropriate starting position, alternating each side of the racetrack to create two (2) starting columns and to fill any open grid positions left by Cars changed from the official starting grid or falling out during the formation lap(s). Drivers should take the position that is the opposite of the Car in front of them. After the Cars have paired up, the grid positions of any Cars falling out are filled by the Car directly behind in the column, with successive Cars in the same column moving up also and a Car must no longer attempt to regain its position, and must start from the back of the entire grid.

# PROPER START

Good Overlaps:



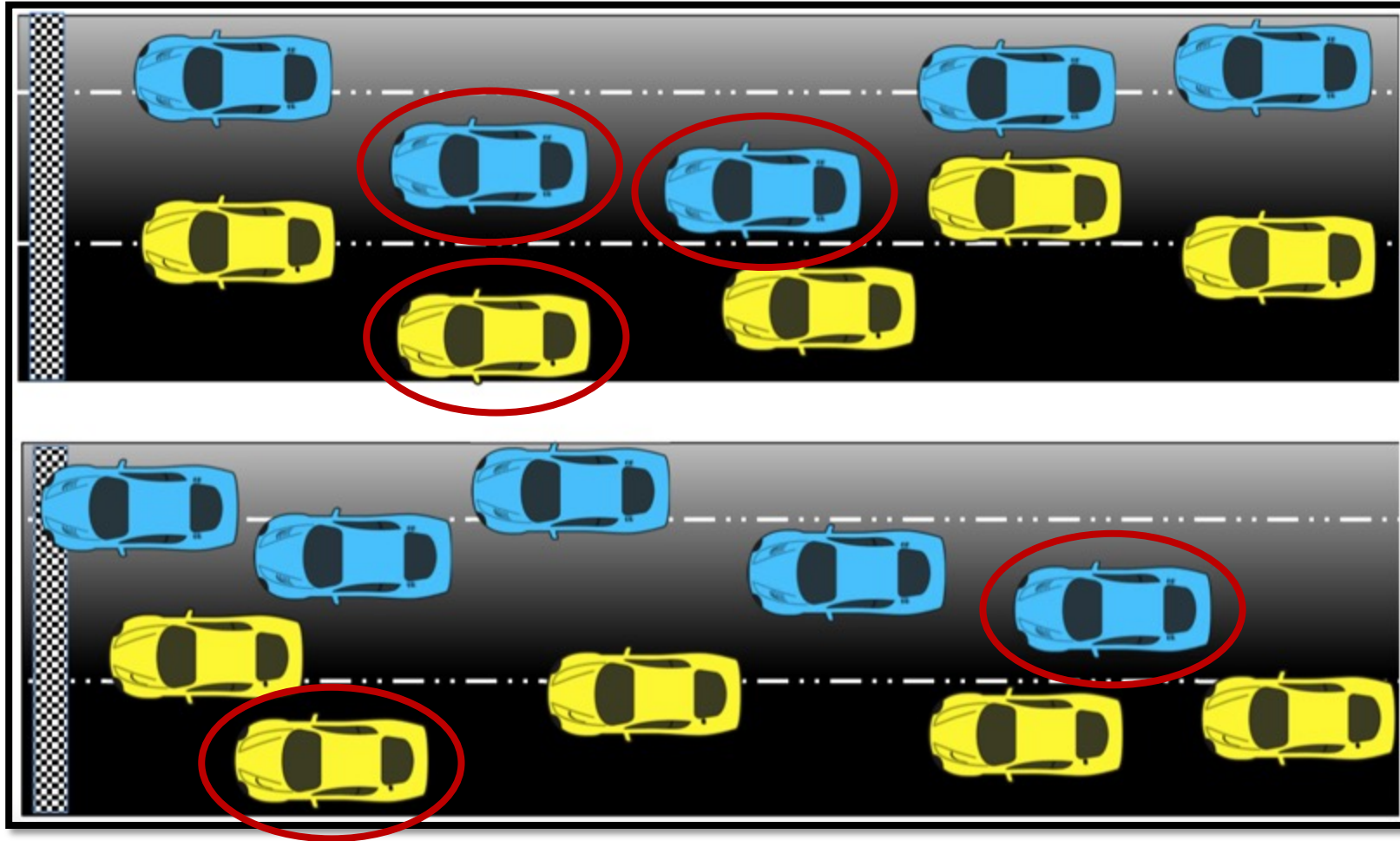
Sloppy:



# PROPER START VIDEO



# IMPROPER START- TO BE REVIEWED



# IMPROPER START VIDEO



# ON-TRACK CONDUCT

---

## LOCAL YELLOW FLAGS (SEE ARTICLE 27)

- No passing from point perpendicular to yellow flag to the point perpendicular to the following green flag

## BLOCKING (SEE ARTICLE 30)

- Movement in reaction to the trailing Car
- Defending increases responsibility

## CONTACT/INCIDENT RESPONSIBILITY (SEE ARTICLE 30)

- Review with Driver Advisor in RC
- Incidents under review announced by Race Control

## COEXISTENCE

- Maintaining awareness lessens margin for error, regardless of responsibility

## COMMUNICATE REVIEW REQUESTS TO PIT OFFICIALS

- Must provide time of day, location, and description of action to be reviewed

## POST RACE VIDEO REVIEW WILL CONTINUE IN 2023

- Probation will continue to be used when appropriate

# POST-RACE VIDEO REVIEW

---

Race Control will announce any incident that will be reviewed post-race DURING the Race

- There will be no official review of any incident that was not officially announced
- Normal unofficial post-race review of incident video for learning purposes will continue
- It's imperative that all potential incidents get communicated to Race Control. If your driver has mentioned an incident and Race Control does not announce shortly that "it's under review," or a team has communicated to Pit Lane staff a complaint from their driver about possible contact and it has not been announced as "under review," then you need to ask again what the status of the inquiry is

Race Control will call any car whose video will be officially reviewed to impound after the race so that the video can be collected immediately after the race for review

Any post-race review that results in a penalty being applied will have that result applied in the Provisional results

# INCIDENT RESPONSIBILITY PENALTIES

---

## INCIDENT RESPONSIBILITY PENALTIES

Drive-Through and 10 second options.

10 second penalties given during the Race are applied as soon as the penalized Car crosses Start/Finish to take the Checkered flag.

The 10 second penalty may be applied for Incident Responsibility, as well as other circumstances at the Race Director's discretion.

A Drive-Through penalty continues to remain available to the Race Director as may be appropriate for an incident.

The 10 second penalty is intended to increase the range of penalty options in shorter sprint races.

After the announcement of a 10 second penalty during a Race, a Team may choose to do a Drive-Through penalty instead of receiving the 10 seconds at the end of the Race. The Drive-Through penalty must be served in accordance with Articles 27.8.2, and 27.8.3 (must be served within four (4) laps of the announcement of the original 10 second penalty).



# PROBATION

- Period of probation: \_\_\_\_\_ events (\_\_\_\_\_ races) with IMSA starting at \_\_\_\_\_. (57.3.3)
- Parameters of probation: Involvement in any incident to be reviewed. Finding of responsibility for incident (findings greater than 'no action', 'incidental', and/or 'other's responsibility', etc.) may result in a one (1) race or greater suspension of license. (57.3.9)
- Successfully (no finding as described above) completing the period of probation to cause the end of the period of probation.
- Race Director is available to discuss any questions regarding on-track conduct or incidents as driver may have in desiring to improve understanding and/or awareness.

57.3.3. PROBATION: IMSA may impose a definite or indefinite period of probation.

57.3.9. SUSPENSION and/or REVOCATION of CREDENTIALS: A Member's privilege to take part at Events may be suspended for a definite or indefinite period. Credentials and/or parking privileges may be revoked for a definite or indefinite period of time.

# PLAN AHEAD

---

Refer to official schedule and MXM for final times and Instructions for races

## Spotter/Team Communication

- Discuss with your spotter/team communicator in advance of each session what the plan is
- Have short code words or phrases to minimize length of comments
- Debrief with your spotter/team communicator after each session?

## Be patient getting to know other drivers

- Who is it you are about to pass?
- Race other competitors as you would like to be raced

# PORSCHE CARRERA CUP NORTH AMERICA

## SEBRING

THANK YOU

**PORSCHE**

---

**CARRERA CUP  
NORTH AMERICA**

# PORSCHE CARRERA CUP NORTH AMERICA

## SEBRING

DRIVER & TEAM MANAGER MEETING

**PORSCHE**

---

**CARRERA CUP  
NORTH AMERICA**

# PRE-RACE / POST-RACE

---

Refer to official schedule and MXM for final times and Instructions for races

# IMSA TRACK SERVICES

## IMSA CHASE VEHICLES

- Chase 1
- Chase 2
- Chase 3
- Chase 4

## ON-TRACK ASSISTANCE

- Communication with Track Services Medic
- Neutral and power shut off
- Follow direction of on-scene Track Services personnel
- Maintain a safe speed and distance when passing on-track incidents with Track Services team members on the scene

Contact: Roy Spielmann 414.702.0905



# RACE

---

One (1) FORMATION lap

Stay with Safety Car until Safety Car enters pits

Pack up on the way to T16 / Pair up after exiting T16, *no more tire scrubbing after T16*

Acceleration Point (Polesitter)

Jump/False start Reviews

- Gaps
- Timed/Early Acceleration
- Out of Line
- Column Passing – Passing cars in your column is NOT allowed until across the S/F line

Official Race start is FIRST time by

# FULL COURSE YELLOW

---

Failure to maintain proper Safety Car speed and correct gaps between Cars, or otherwise initiate manipulative action to gap Cars, is prohibited and subject to penalty.

Race Control radio, in-car lights, double yellow flags displayed

Response vehicles may begin to move as soon as FCY is announced

Leader to Safety Car speed, all Cars pack up – respect the area of incident/Track Services personnel

- RC instructions regarding track condition over radio
- SC dispatched from Pit Exit

## RESTART

- Maintain SC speed, let SC get away, *no more tire scrubbing after T16*

## RESTART ACCELERATION ZONE – Entry to T17

- Passing on display of green flag



# RESTART ACCELERATION ZONE

Restart acceleration zone is the entry to Turn 17.



# ON-TRACK CONDUCT

---

## LOCAL YELLOW FLAGS (SEE ARTICLE 27)

- No passing from point perpendicular to yellow flag to the point perpendicular to the following green flag

## BLOCKING (SEE ARTICLE 30)

- Movement in reaction to the trailing Car
- Defending increases responsibility

## CONTACT/INCIDENT RESPONSIBILITY (SEE ARTICLE 30)

- Review with Driver Advisor in RC
- Incidents under review announced by Race Control

## COEXISTENCE

- Maintaining awareness lessens margin for error, regardless of responsibility

## COMMUNICATE REVIEW REQUESTS TO PIT OFFICIALS

- Must provide time of day, location, and description of action to be reviewed

## POST RACE VIDEO REVIEW WILL CONTINUE IN 2023

- Probation will continue to be used when appropriate

# ON-TRACK REVIEW

---

## First Event of the Year

- Stay in line for the starts
- Race other competitors as you would like to be raced
- Friday race late in the day – Lights? NO RAIN LIGHTS

## Sebring Specifics

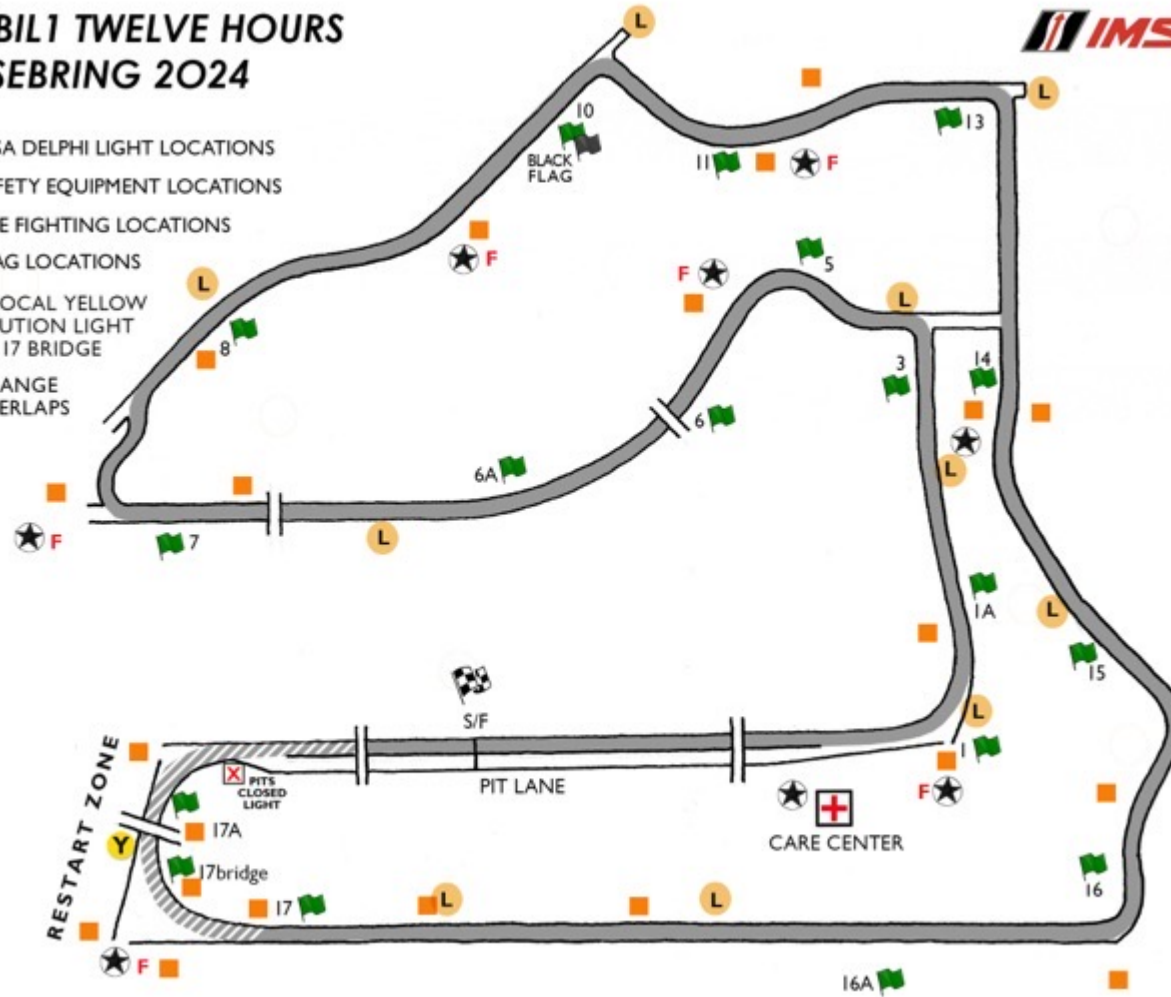
- Turn 1 - start
- Turn 7 - passing
- Turn 13 – exit
- Turn 16 – passing?

# TRACK MAP

## MOBIL1 TWELVE HOURS OF SEBRING 2024



- L** IMSA DELPHI LIGHT LOCATIONS
- ★** SAFETY EQUIPMENT LOCATIONS
- F** FIRE FIGHTING LOCATIONS
- 🚩** FLAG LOCATIONS
- Y** - LOCAL YELLOW CAUTION LIGHT AT 17 BRIDGE
- ORANGE OVERLAPS



# PORSCHE CARRERA CUP NORTH AMERICA

## SEBRING

THANK YOU

**PORSCHE**

---

**CARRERA CUP  
NORTH AMERICA**